

## Air Temperature (Degrees F) FY 2007 - 2008 Average

0 445 890 1,780 2,670 3,560 Meters

**Ottawa Tribe of Oklahoma**  
**Environmental Department**



**Disclaimer:** The Ottawa Tribe of Oklahoma makes no warranty for fitness of use for a particular purpose, express or implied, with respect to this map product. Every reasonable effort has been made to assure the accuracy of the maps and data provided nevertheless, some information may not be accurate. Any user of this map product accepts its faults and assumes all responsibility for the use thereof, and further agrees to hold the Ottawa Tribe harmless from and against any damage, loss or liability.



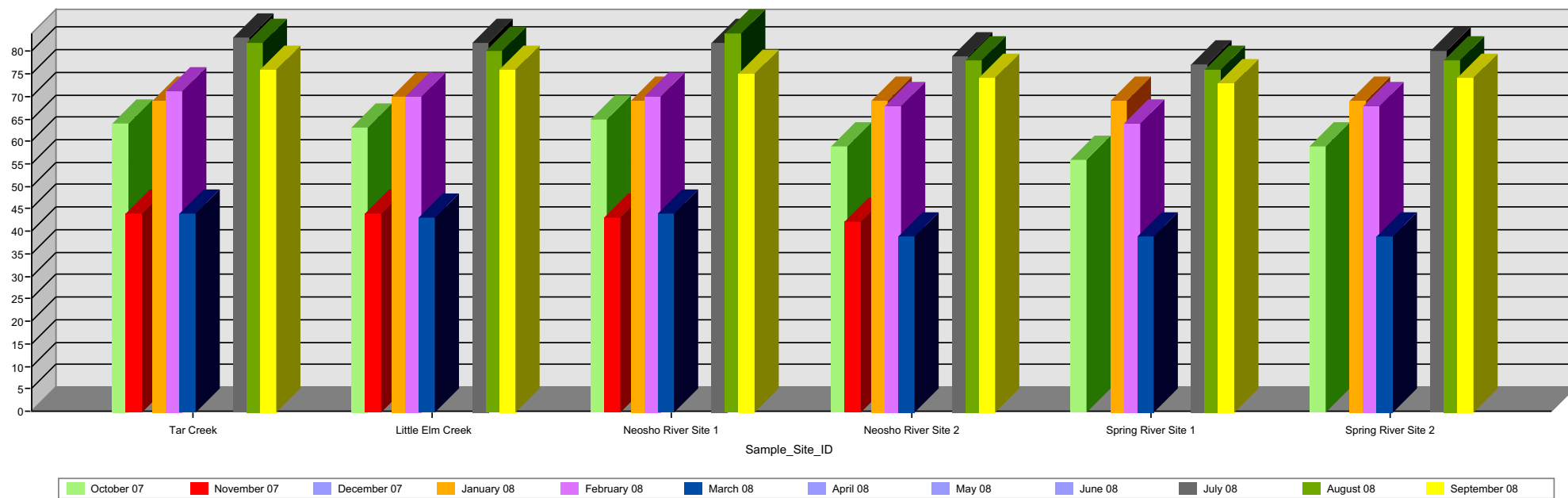
### Contact Information

Drawn By: Lori Bailey

Phone: 918-540-1536

Date: October 28, 2008

Ottawa Tribe Water Program Air Temperature Results (Degrees fahrenheit) FY 07 - 08



December 2007 was not sampled due to freezing. April, May and June 2008 were not sampled due to flooding



## Air Temperature Results (Degrees Fahrenheit) FY 07 - 08

10/27/2008

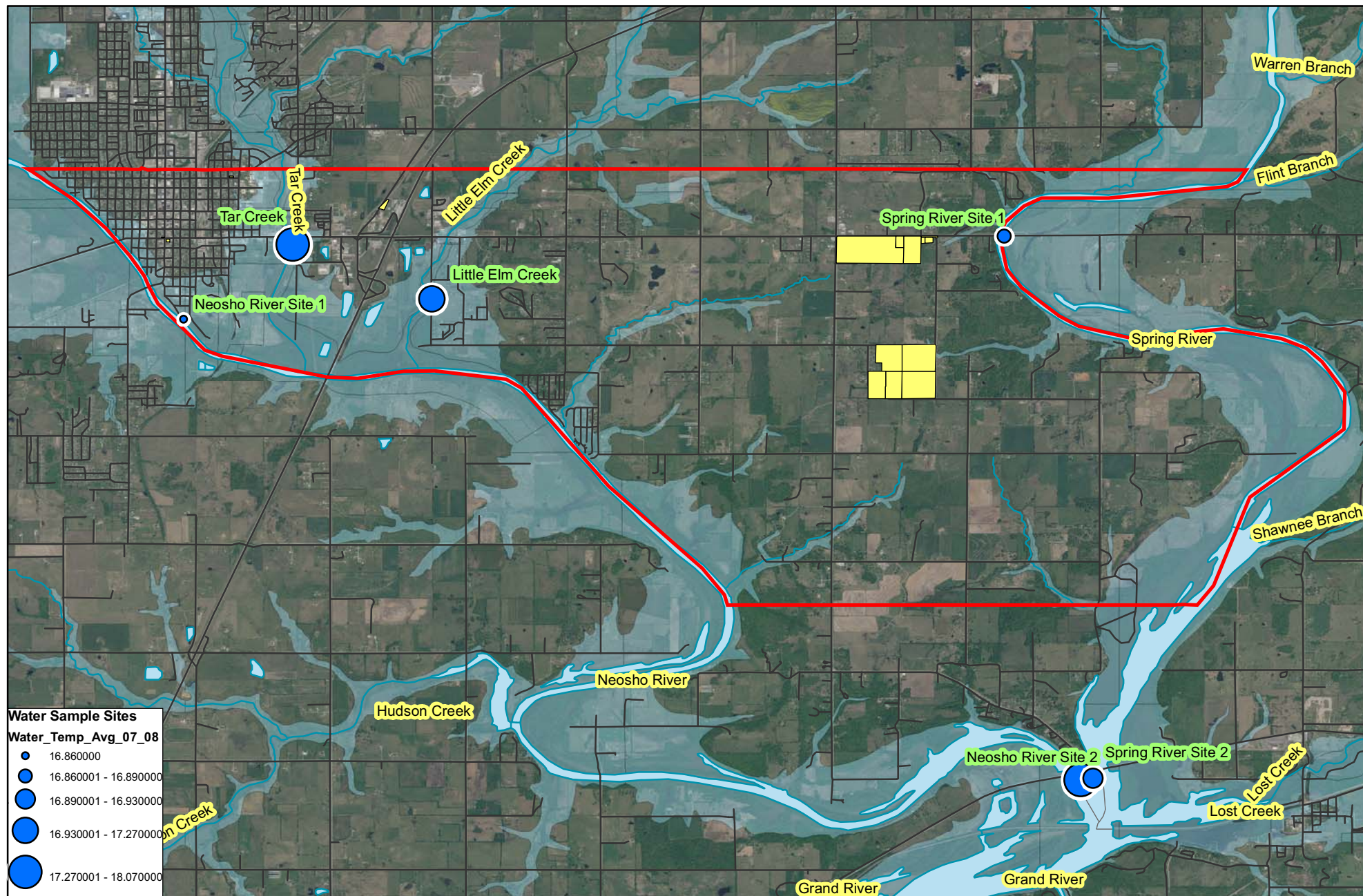
Sample Site ID	October 07	November 07	January 08	February 08	March 08	July 08	August 08	September 08
Tar Creek	64.00	44.00	69.00	71.00	44.00	83.00	82.00	76.00
Little Elm Creek	63.00	44.00	70.00	70.00	43.00	82.00	80.00	76.00
Neosho River Site 1	65.00		69.00	70.00	44.00	82.00	84.00	75.00
Neosho River Site 2	59.00	43.00	69.00	68.00	39.00	79.00	78.00	74.00
Spring River Site 1	56.00	42.00	69.00	64.00	39.00	77.00	76.00	73.00
Spring River Site 2	59.00		69.00	68.00	39.00	80.00	78.00	74.00

Samples were not collected in December 2007 due to ice.

Samples were not collected in April, May, or June 2008 due to flooding.

Ottawa Tribe of Oklahoma  
Environmental Department  
13 South 69 A  
Miami, OK 74335





## Water Temperature (Degrees C) FY 2007 - 2008 Average

0 445 890 1,780 2,670 3,560 Meters

**Ottawa Tribe of Oklahoma**  
Environmental Department



**Disclaimer:** The Ottawa Tribe of Oklahoma makes no warranty for fitness of use for a particular purpose, express or implied, with respect to this map product. Every reasonable effort has been made to assure the accuracy of the maps and data provided nevertheless, some information may not be accurate. Any user of this map product accepts its faults and assumes all responsibility for the use thereof, and further agrees to hold the Ottawa Tribe harmless from and against any damage, loss or liability.



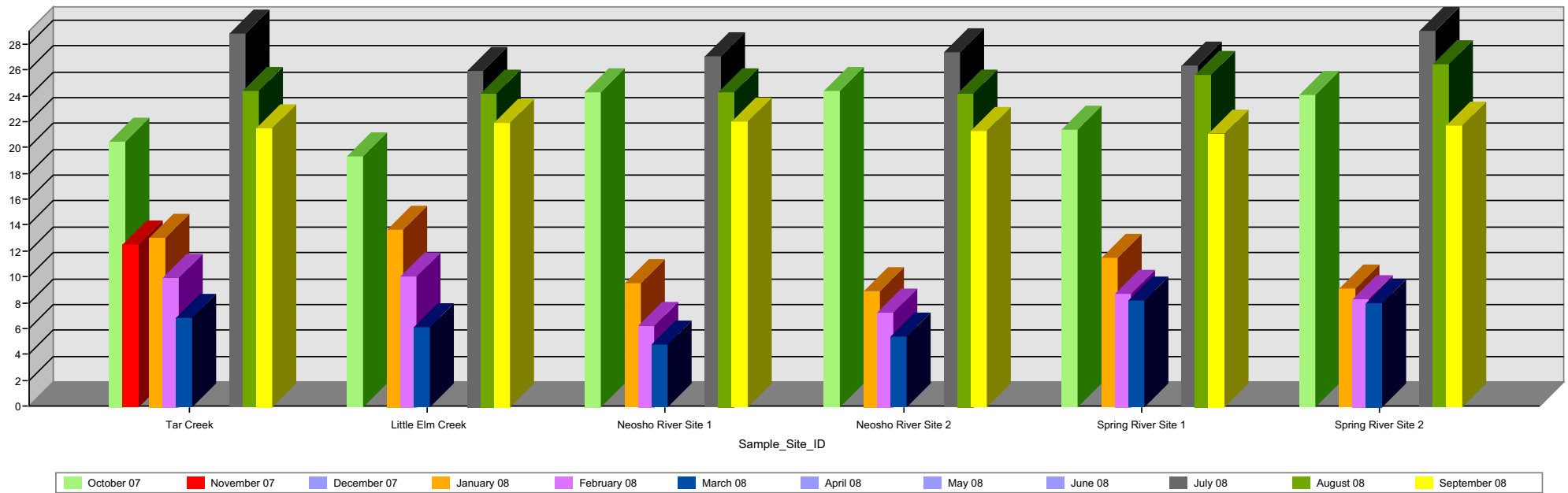
### Contact Information

Drawn By: Lori Bailey

Phone: 918-540-1536

Date: October 28, 2008

Ottawa Tribe Water Program Water Temperature Results (Degrees Celsius) FY 07 - 08



December 2007 was not sampled due to freezing. April, May and June 2008 were not sampled due to flooding



## Water Temperature (Degrees Celsius) FY 07 - 08

10/27/2008

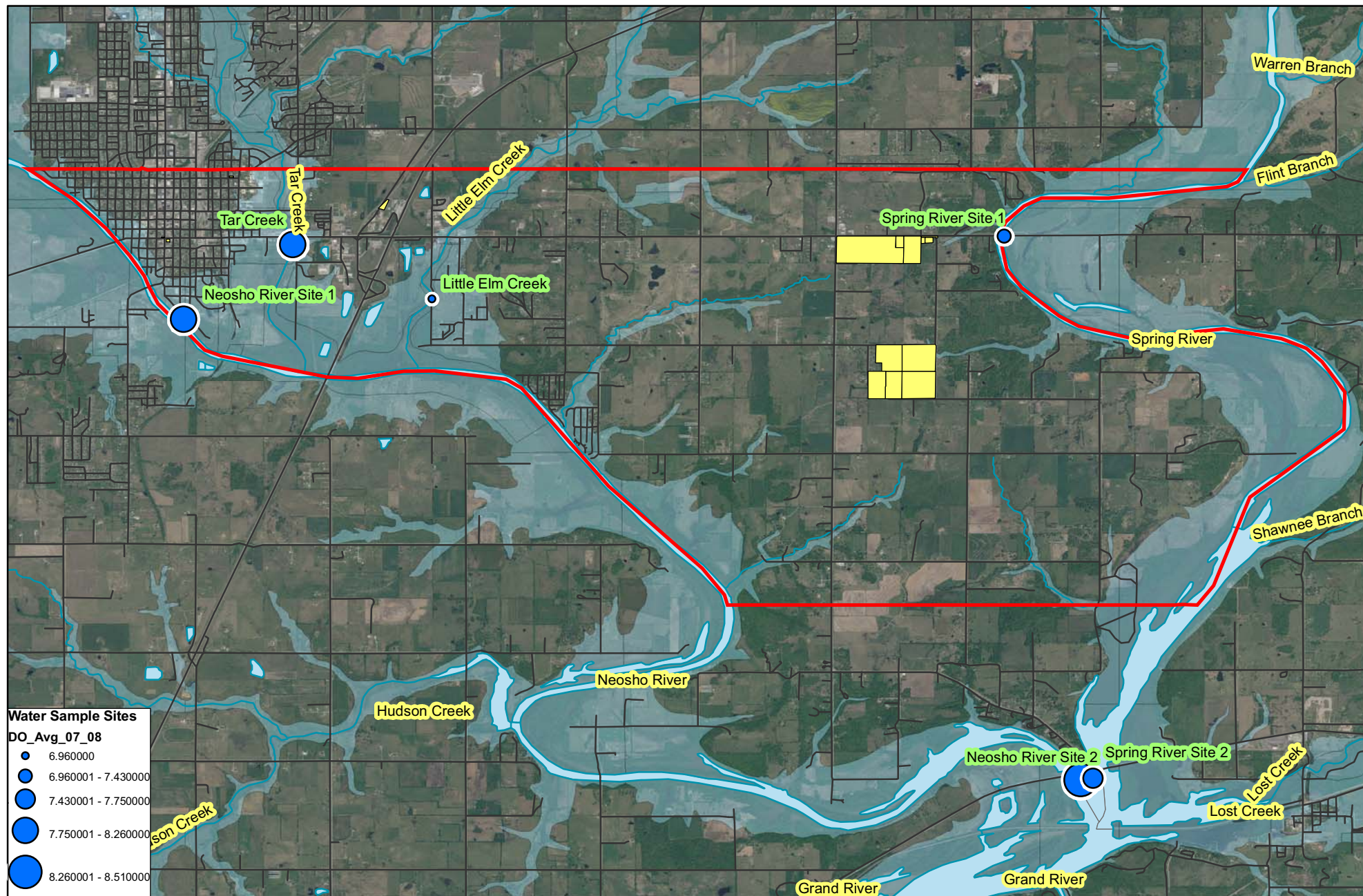
Sample Site ID	October 07	November 07	January 08	February 08	March 08	July 08	August 08	September 08
Tar Creek	20.46		13.02	9.95	6.85	28.81	24.35	21.50
Little Elm Creek	19.28		13.65	9.99	6.11	25.88	24.12	21.87
Neosho River Site 1	24.30		9.47	6.17	4.74	27.07	24.27	22.01
Neosho River Site 2	24.34		8.86	7.26	5.35	27.35	24.16	21.23
Spring River Site 1	21.41	12.52	11.44	8.64	8.13	26.34	25.62	21.03
Spring River Site 2	24.08		9.04	8.26	7.93	29.01	26.45	21.72

Samples were not collected in December 2007 due to ice.

Samples were not collected in April, May, or June 2008 due to flooding.

Ottawa Tribe of Oklahoma  
Environmental Department  
13 South 69 A  
Miami, OK 74335





## Dissolved Oxygen FY 2007 - 2008 Average

0 445 890 1,780 2,670 3,560 Meters

**Ottawa Tribe of Oklahoma**  
Environmental Department



**Disclaimer:** The Ottawa Tribe of Oklahoma makes no warranty for fitness of use for a particular purpose, express or implied, with respect to this map product. Every reasonable effort has been made to assure the accuracy of the maps and data provided nevertheless, some information may not be accurate. Any user of this map product accepts its faults and assumes all responsibility for the use thereof, and further agrees to hold the Ottawa Tribe harmless from and against any damage, loss or liability.



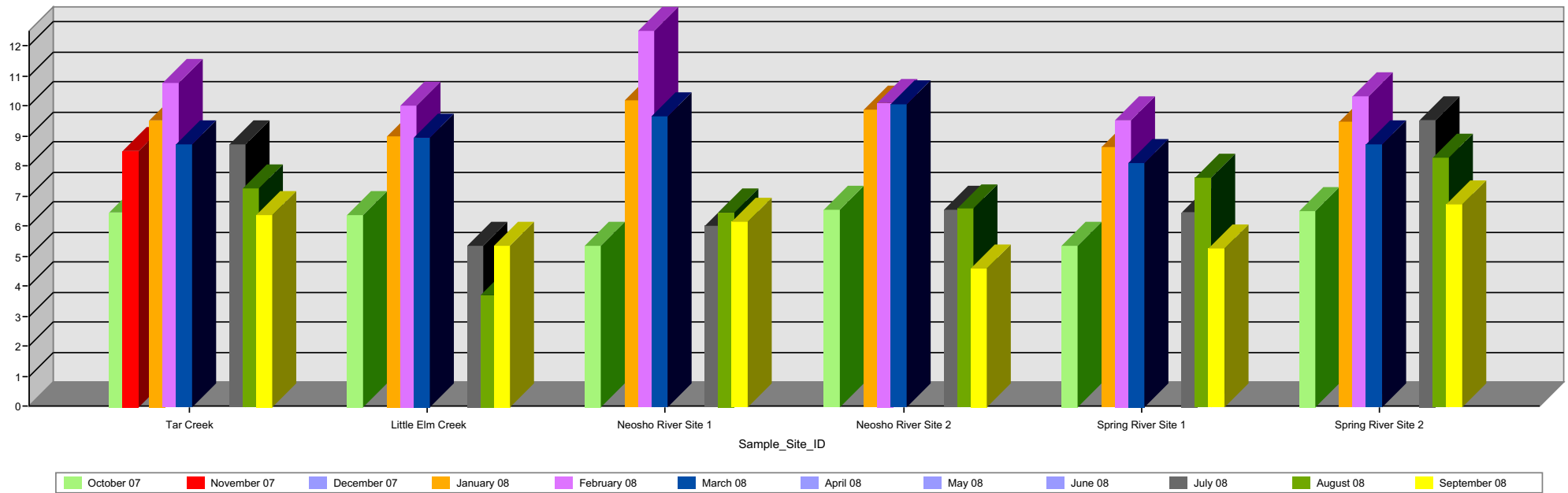
### Contact Information

Drawn By: Lori Bailey

Phone: 918-540-1536

Date: October 28, 2008

Ottawa Tribe Water Program Dissolved Oxygen FY 07 - 08



December 2007 was not sampled due to freezing. April, May and June 2008 were not sampled due to flooding





## Dissolved Oxygen (mg/l) FY 07 - 08

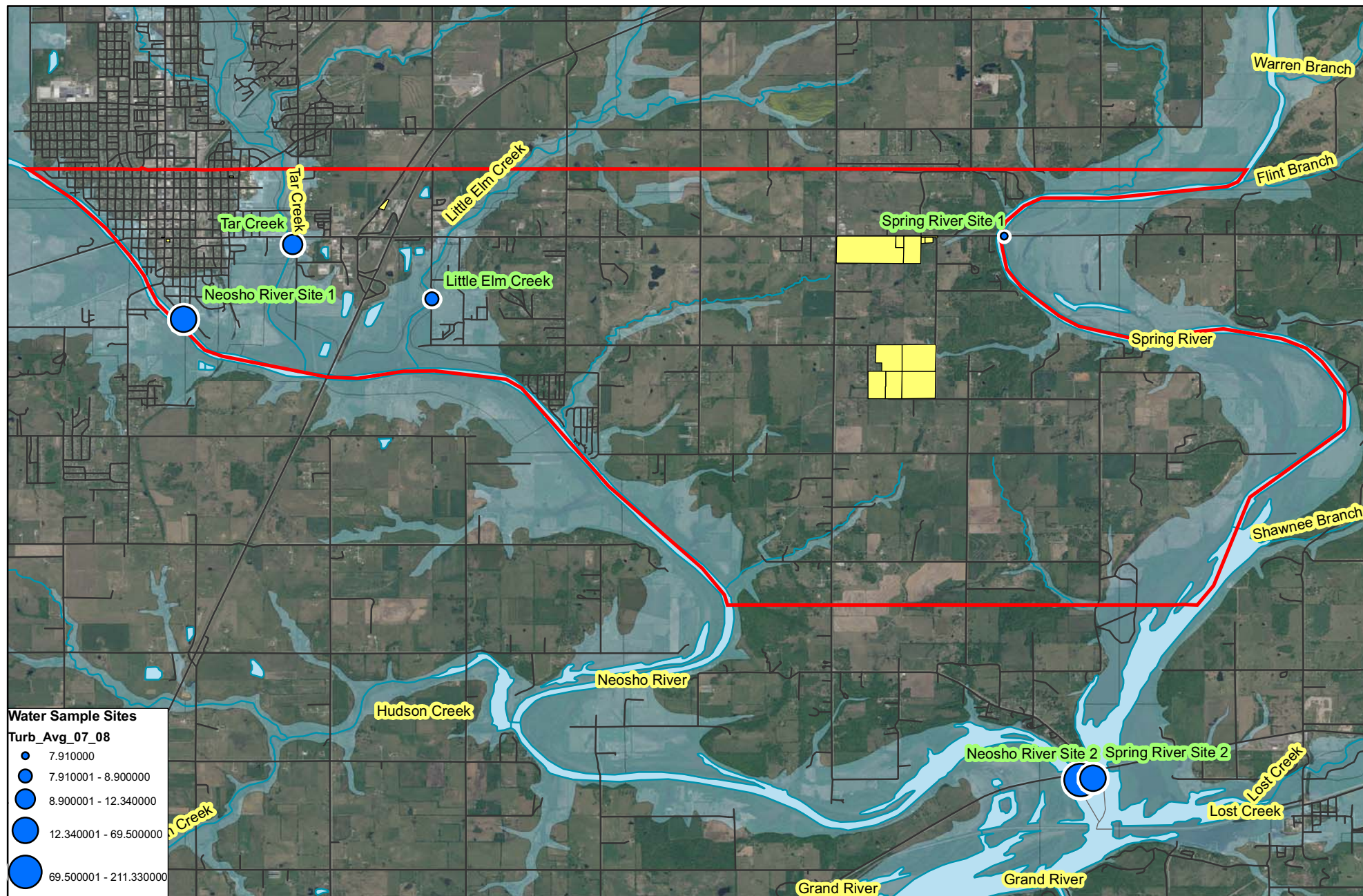
10/27/2008

Sample Site ID	October 07	November 07	January 08	February 08	March 08	July 08	August 08	September 08
Tar Creek	6.47		9.51	10.77	8.72	8.73	7.24	6.36
Little Elm Creek	6.38		9.01	10.00	8.95	5.34	3.70	5.33
Neosho River Site 1	5.36		10.21	12.51	9.67	6.02	6.46	6.15
Neosho River Site 2	6.53		9.87	10.09	10.04	6.53	6.61	4.57
Spring River Site 1	5.33	8.49	8.62	9.54	8.11	6.47	7.60	5.27
Spring River Site 2	6.48		9.50	10.31	8.74	9.52	8.26	6.74

Samples were not collected in December 2007 due to ice.

Samples were not collected in April, May, or June 2008 due to flooding.

Ottawa Tribe of Oklahoma  
Environmental Department  
13 South 69 A  
Miami, OK 74335



## Turbidity FY 2007 - 2008 Average

0 445 890 1,780 2,670 3,560 Meters

**Ottawa Tribe of Oklahoma**  
Environmental Department



**Disclaimer:** The Ottawa Tribe of Oklahoma makes no warranty for fitness of use for a particular purpose, express or implied, with respect to this map product. Every reasonable effort has been made to assure the accuracy of the maps and data provided nevertheless, some information may not be accurate. Any user of this map product accepts its faults and assumes all responsibility for the use thereof, and further agrees to hold the Ottawa Tribe harmless from and against any damage, loss or liability.



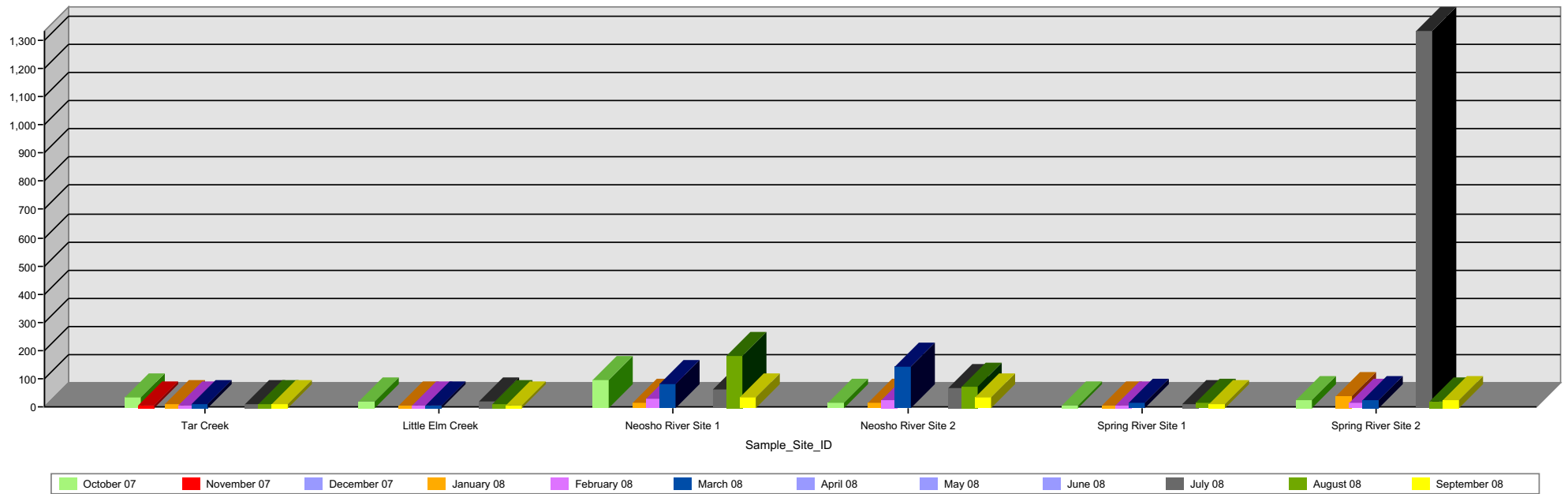
### Contact Information

Drawn By: Lori Bailey

Phone: 918-540-1536

Date: October 28, 2008

Ottawa Tribe Water Program Turbidity Results (NTU) FY 07 - 08



December 2007 was not sampled due to freezing. April, May and June 2008 were not sampled due to flooding





## Turbidity (NTU) FY 07 - 08

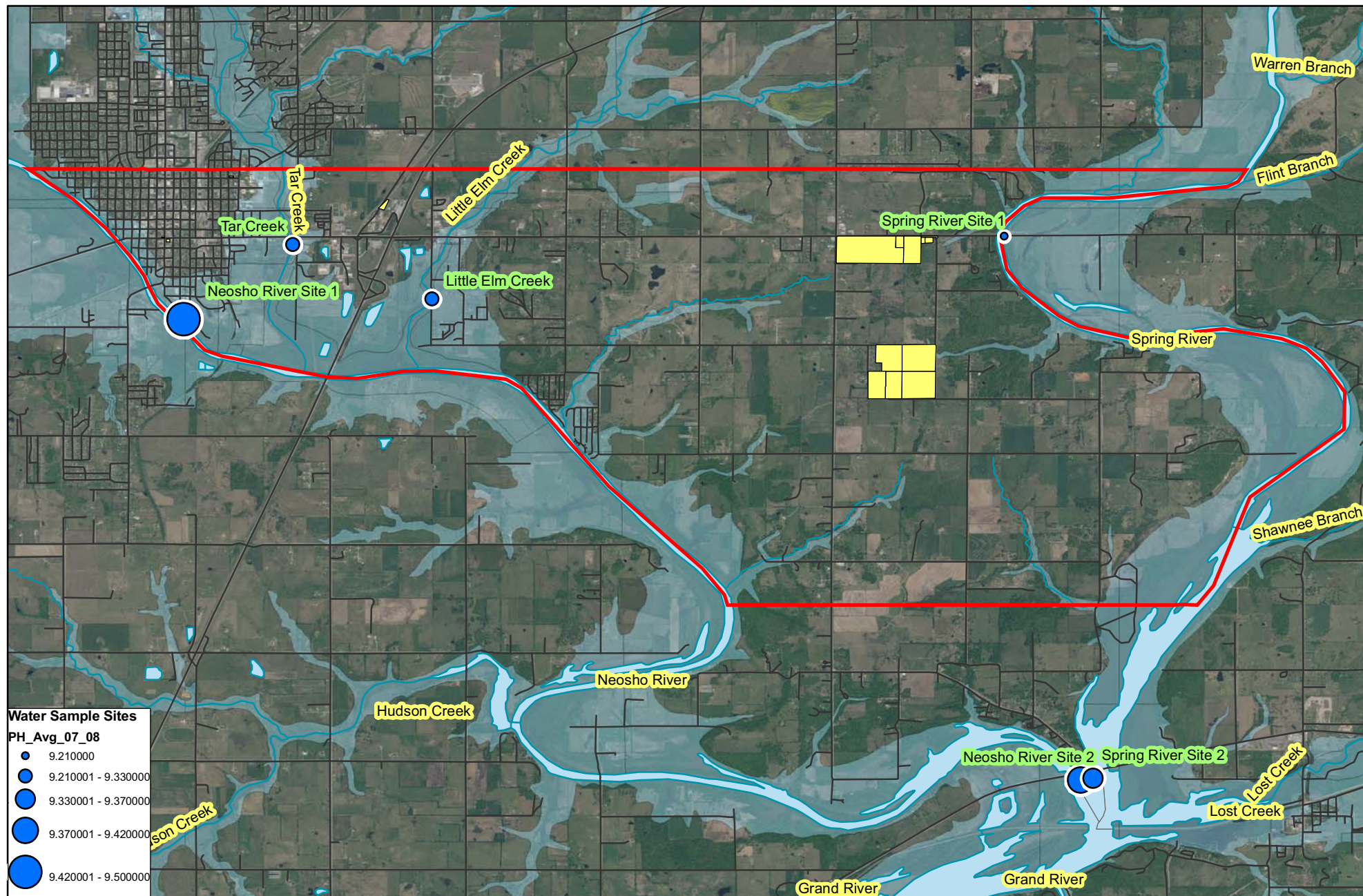
10/27/2008

Sample Site ID	October 07	November 07	January 08	February 08	March 08	July 08	August 08	September 08
Tar Creek	32.00		8.10	7.00	11.20	7.70	10.30	10.10
Little Elm Creek	20.60		2.60	2.40	4.10	19.10	8.50	5.00
Neosho River Site 1	93.30		16.10	26.10	81.60	60.40	178.00	31.00
Neosho River Site 2	12.80		15.10	22.90	140.50	64.70	72.40	31.10
Spring River Site 1	6.90	3.10	5.20	3.20	12.60	8.30	16.50	7.50
Spring River Site 2	22.10		37.40	16.40	25.90	1,333.40	20.80	23.30

Samples were not collected in December 2007 due to ice.

Samples were not collected in April, May, or June 2008 due to flooding.

Ottawa Tribe of Oklahoma  
Environmental Department  
13 South 69 A  
Miami, OK 74335



## Ph FY 2007 - 2008 Average

0 445 890 1,780 2,670 3,560 Meters

**Ottawa Tribe of Oklahoma**  
Environmental Department



**Disclaimer:** The Ottawa Tribe of Oklahoma makes no warranty for fitness of use for a particular purpose, express or implied, with respect to this map product. Every reasonable effort has been made to assure the accuracy of the maps and data provided nevertheless, some information may not be accurate. Any user of this map product accepts its faults and assumes all responsibility for the use thereof, and further agrees to hold the Ottawa Tribe harmless from and against any damage, loss or liability.



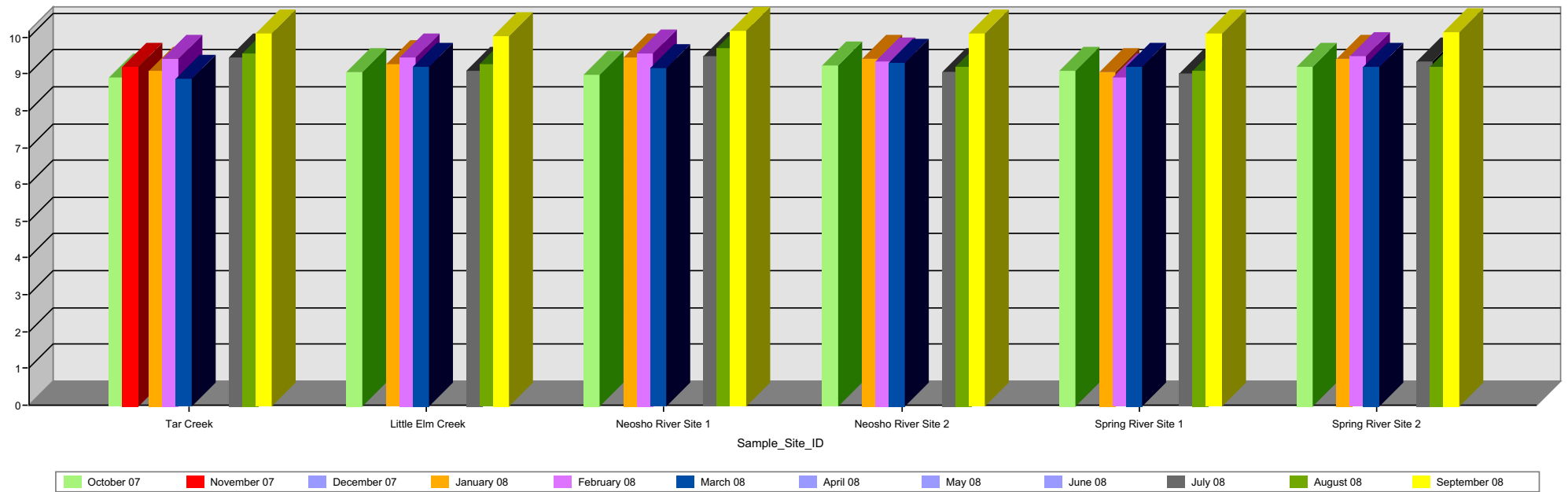
### Contact Information

Drawn By: Lori Bailey

Phone: 918-540-1536

Date: October 28, 2008

Ottawa Tribe Water Program PH Results FY 07 - 08



December 2007 was not sampled due to freezing. April, May and June 2008 were not sampled due to flooding. November Results not shown due to battery failure in testing equipment.





## PH Results FY 07 - 08

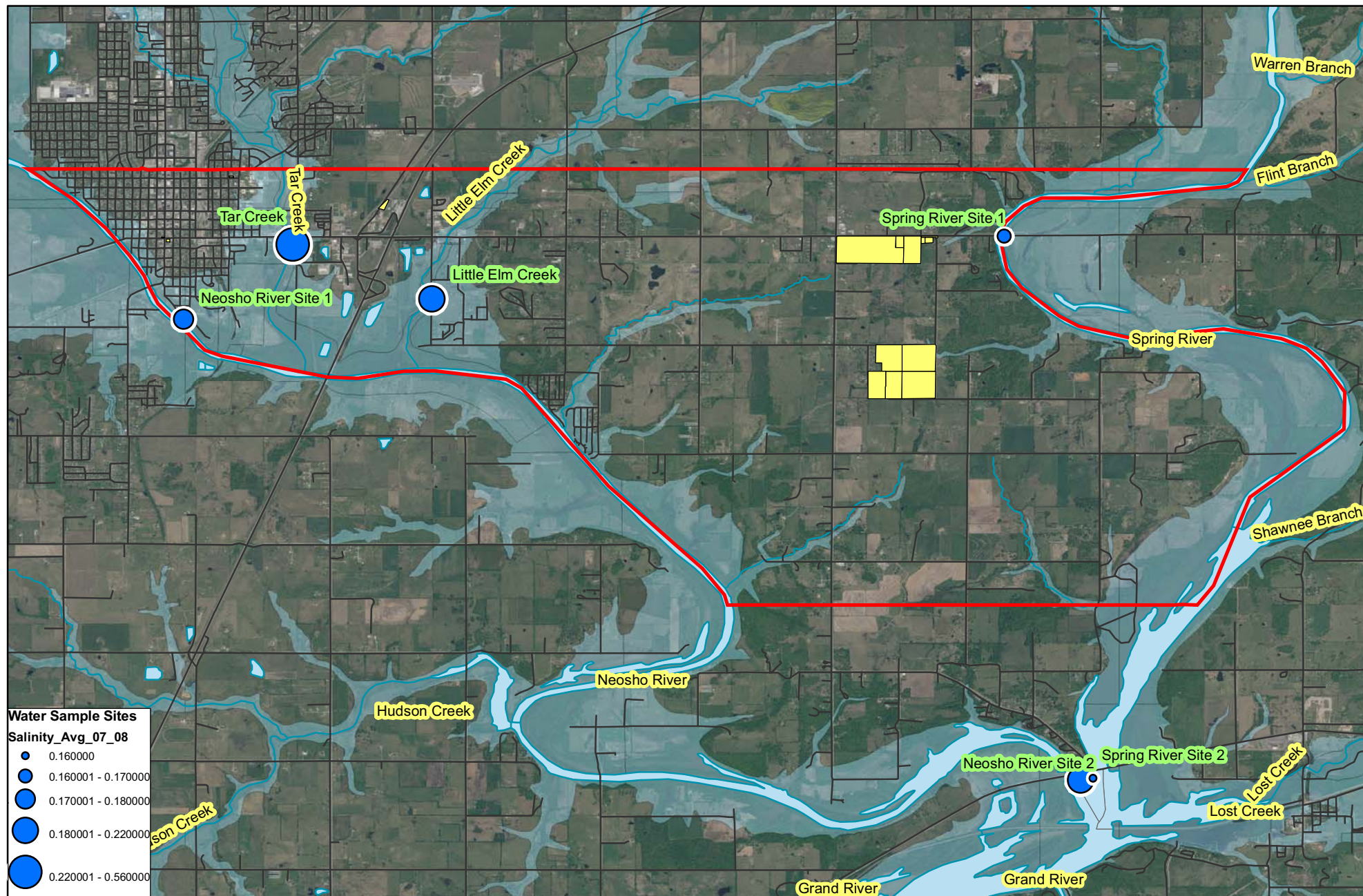
10/27/2008

Sample Site ID	October 07	November 07	January 08	February 08	March 08	July 08	August 08	September 08
Tar Creek	8.92		9.07	9.41	8.85	9.43	9.55	10.11
Little Elm Creek	9.03		9.26	9.45	9.18	9.08	9.26	10.03
Neosho River Site 1	8.99		9.44	9.57	9.14	9.50	9.70	10.17
Neosho River Site 2	9.23		9.40	9.35	9.30	9.04	9.18	10.10
Spring River Site 1	9.09	9.20	9.06	8.92	9.19	9.01	9.10	10.08
Spring River Site 2	9.20		9.40	9.47	9.19	9.35	9.21	10.14

Samples were not collected in December 2007 due to ice.

Samples were not collected in April, May, or June 2008 due to flooding.

Ottawa Tribe of Oklahoma  
Environmental Department  
13 South 69 A  
Miami, OK 74335



## Salinity FY 2007 - 2008 Average

0 445 890 1,780 2,670 3,560 Meters

**Ottawa Tribe of Oklahoma**  
**Environmental Department**



**Disclaimer:** The Ottawa Tribe of Oklahoma makes no warranty for fitness of use for a particular purpose, express or implied, with respect to this map product. Every reasonable effort has been made to assure the accuracy of the maps and data provided nevertheless, some information may not be accurate. Any user of this map product accepts its faults and assumes all responsibility for the use thereof, and further agrees to hold the Ottawa Tribe harmless from and against any damage, loss or liability.



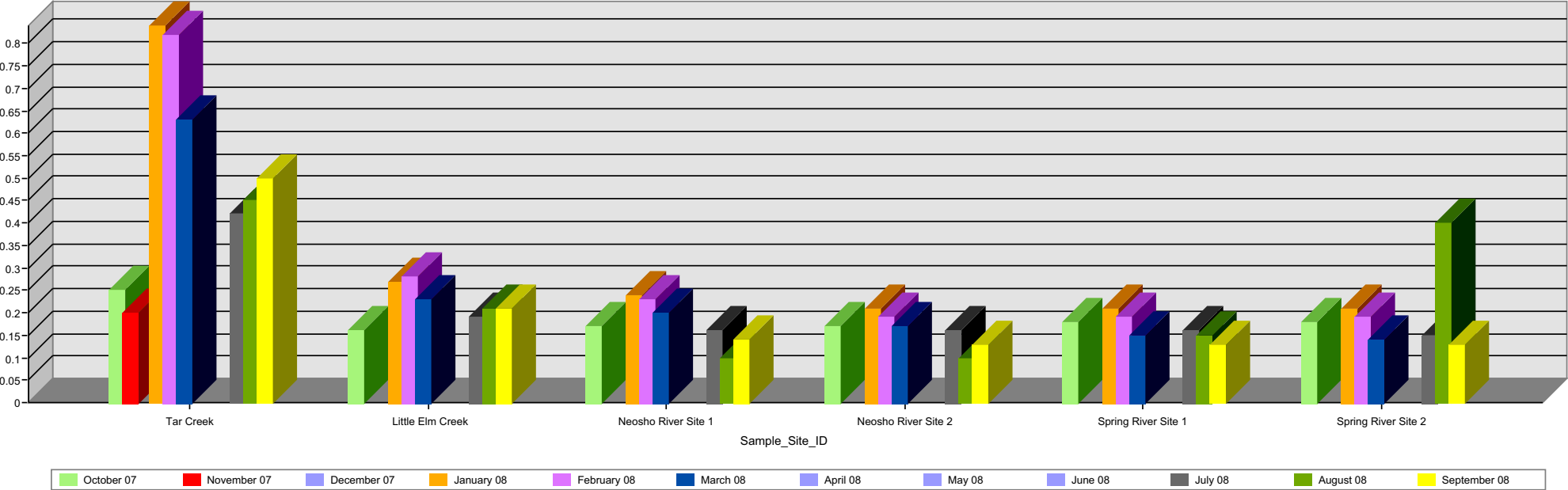
### Contact Information

Drawn By: Lori Bailey

Phone: 918-540-1536

Date: October 28, 2008

Ottawa Tribe Water Program Salinity Results FY 07 - 08



December 2007 was not sampled due to freezing. April, May and June 2008 were not sampled due to flooding. November Results not shown due to battery failure in testing equipment.





## Salinity Results FY 07 - 08

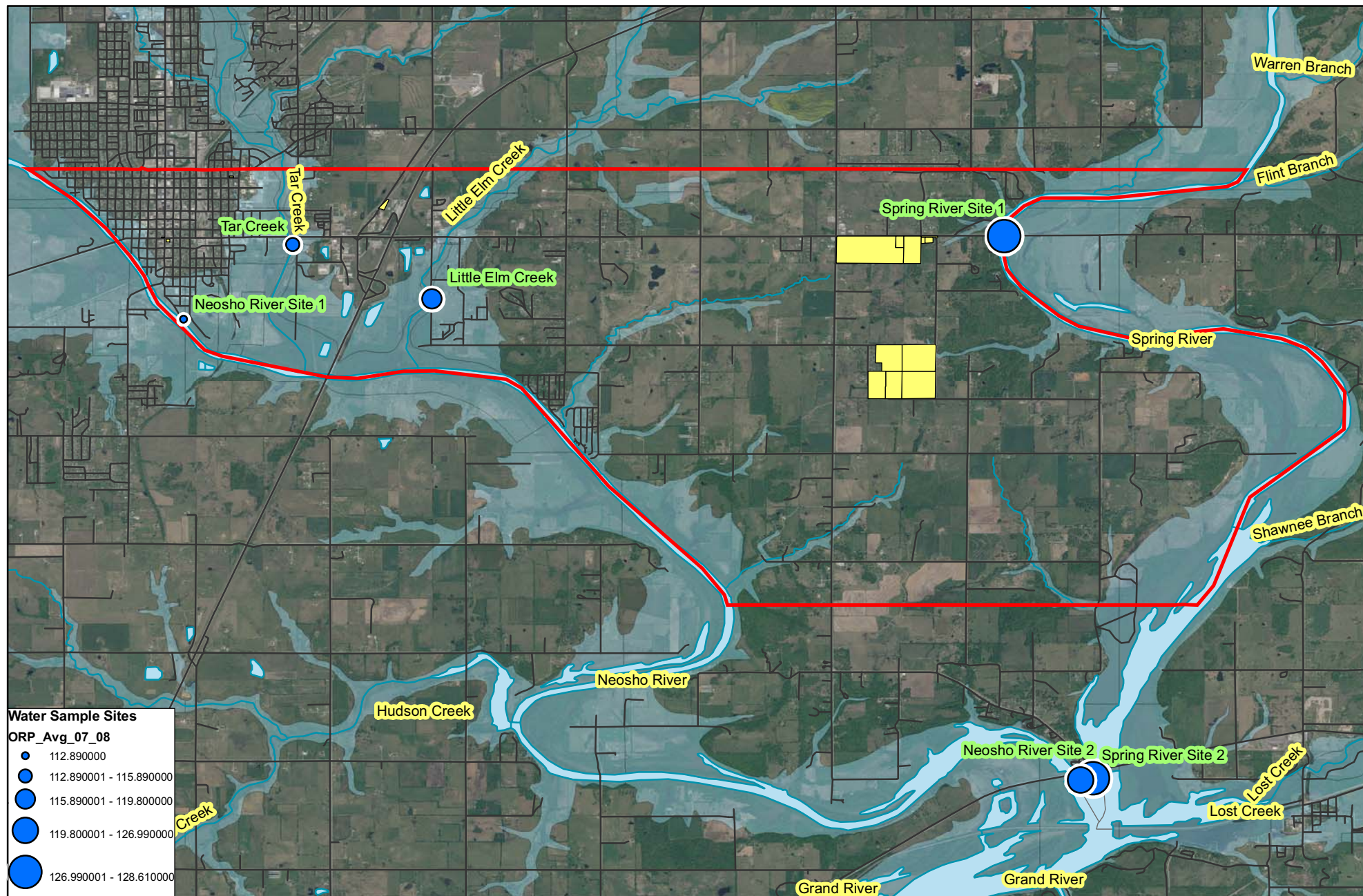
10/27/2008

Sample Site ID	October 07	November 07	January 08	February 08	March 08	July 08	August 08	September 08
Tar Creek	0.25		0.84	0.82	0.63	0.42	0.45	0.50
Little Elm Creek	0.16		0.27	0.28	0.23	0.19	0.21	0.21
Neosho River Site 1	0.17		0.24	0.23	0.20	0.16	0.10	0.14
Neosho River Site 2	0.17		0.21	0.19	0.17	0.16	0.10	0.13
Spring River Site 1	0.18	0.20	0.21	0.19	0.15	0.16	0.15	0.13
Spring River Site 2	0.18		0.21	0.19	0.14	0.15	0.40	0.13

Samples were not collected in December 2007 due to ice.

Samples were not collected in April, May, or June 2008 due to flooding.

Ottawa Tribe of Oklahoma  
Environmental Department  
13 South 69 A  
Miami, OK 74335



## ORP FY 2007 - 2008 Average

0 445 890 1,780 2,670 3,560 Meters

**Ottawa Tribe of Oklahoma**  
Environmental Department



**Disclaimer:** The Ottawa Tribe of Oklahoma makes no warranty for fitness of use for a particular purpose, express or implied, with respect to this map product. Every reasonable effort has been made to assure the accuracy of the maps and data provided nevertheless, some information may not be accurate. Any user of this map product accepts its faults and assumes all responsibility for the use thereof, and further agrees to hold the Ottawa Tribe harmless from and against any damage, loss or liability.



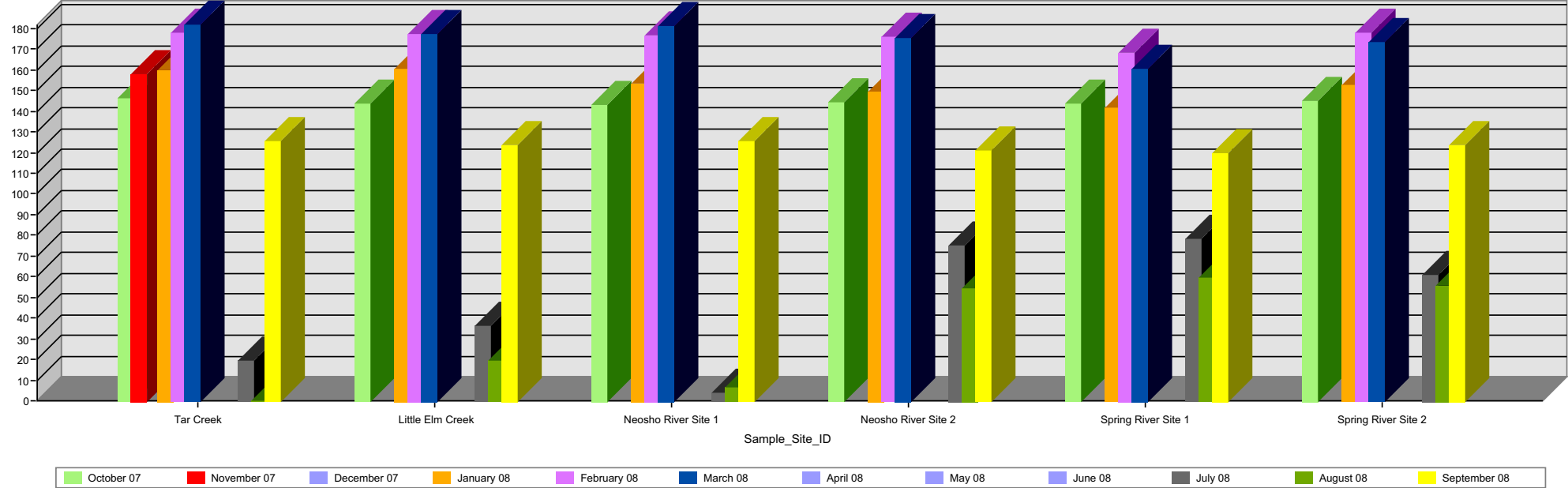
### Contact Information

Drawn By: Lori Bailey

Phone: 918-540-1536

Date: October 28, 2008

Ottawa Tribe Water Program ORP Results FY 07 - 08



December 2007 was not sampled due to freezing. April, May and June 2008 were not sampled due to flooding. November Results not shown due to battery failure in testing equipment.





## ORP Results FY 07 - 08

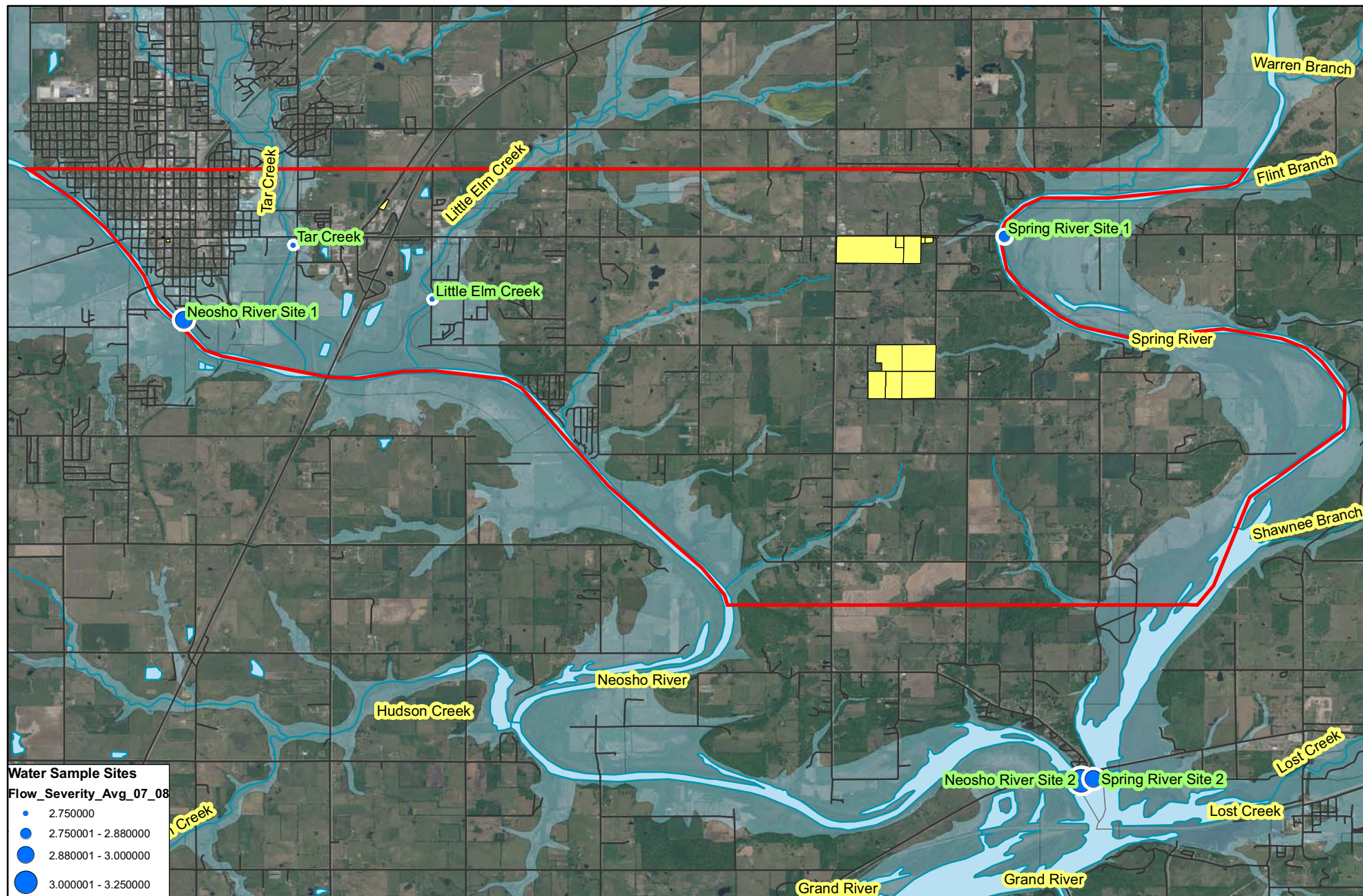
10/27/2008

Sample Site ID	October 07	November 07	January 08	February 08	March 08	July 08	August 08	September 08
Tar Creek	146.40		160.10	178.20	181.80	19.50	0.00	125.20
Little Elm Creek	143.60		160.60	177.10	177.50	36.40	19.60	123.80
Neosho River Site 1	143.20		153.10	176.70	181.10	4.00	6.40	125.70
Neosho River Site 2	144.30		149.50	176.10	175.50	75.30	54.20	121.30
Spring River Site 1	143.60	157.80	141.40	168.40	160.40	78.10	59.30	119.90
Spring River Site 2	144.70		152.90	177.70	173.30	60.70	55.90	123.70

Samples were not collected in December 2007 due to ice.

Samples were not collected in April, May, or June 2008 due to flooding.

Ottawa Tribe of Oklahoma  
Environmental Department  
13 South 69 A  
Miami, OK 74335



## Flow Severity FY 2007 - 2008 Average

0 450 900 1,800 2,700 3,600 Meters

**Ottawa Tribe of Oklahoma**  
**Environmental Department**



**Disclaimer:** The Ottawa Tribe of Oklahoma makes no warranty for fitness of use for a particular purpose, express or implied, with respect to this map product. Every reasonable effort has been made to assure the accuracy of the maps and data provided nevertheless, some information may not be accurate. Any user of this map product accepts its faults and assumes all responsibility for the use thereof, and further agrees to hold the Ottawa Tribe harmless from and against any damage, loss or liability.



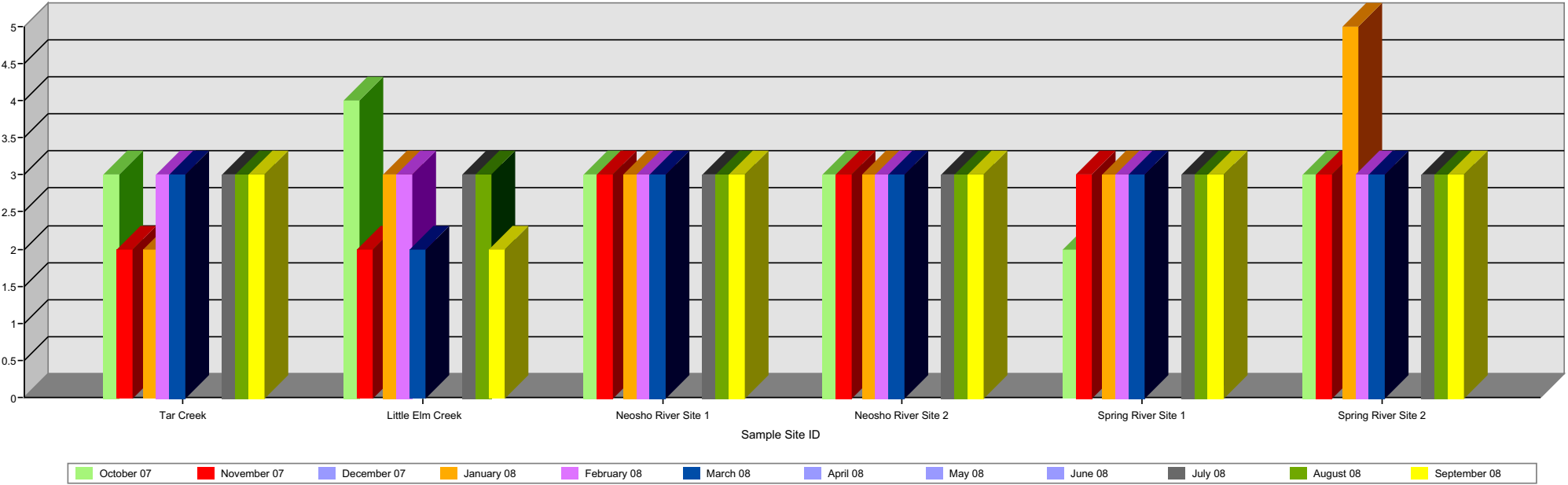
### Contact Information

Drawn By: Lori Bailey

Phone: 918-540-1536

Date: October 28, 2008

Ottawa Tribe Water Program Flow Severity (mg/l) Results FY 07 - 08



December 2007 was not sampled due to freezing. April, May and June 2008 were not sampled due to flooding.





## Flow Severity Results FY 07 - 08

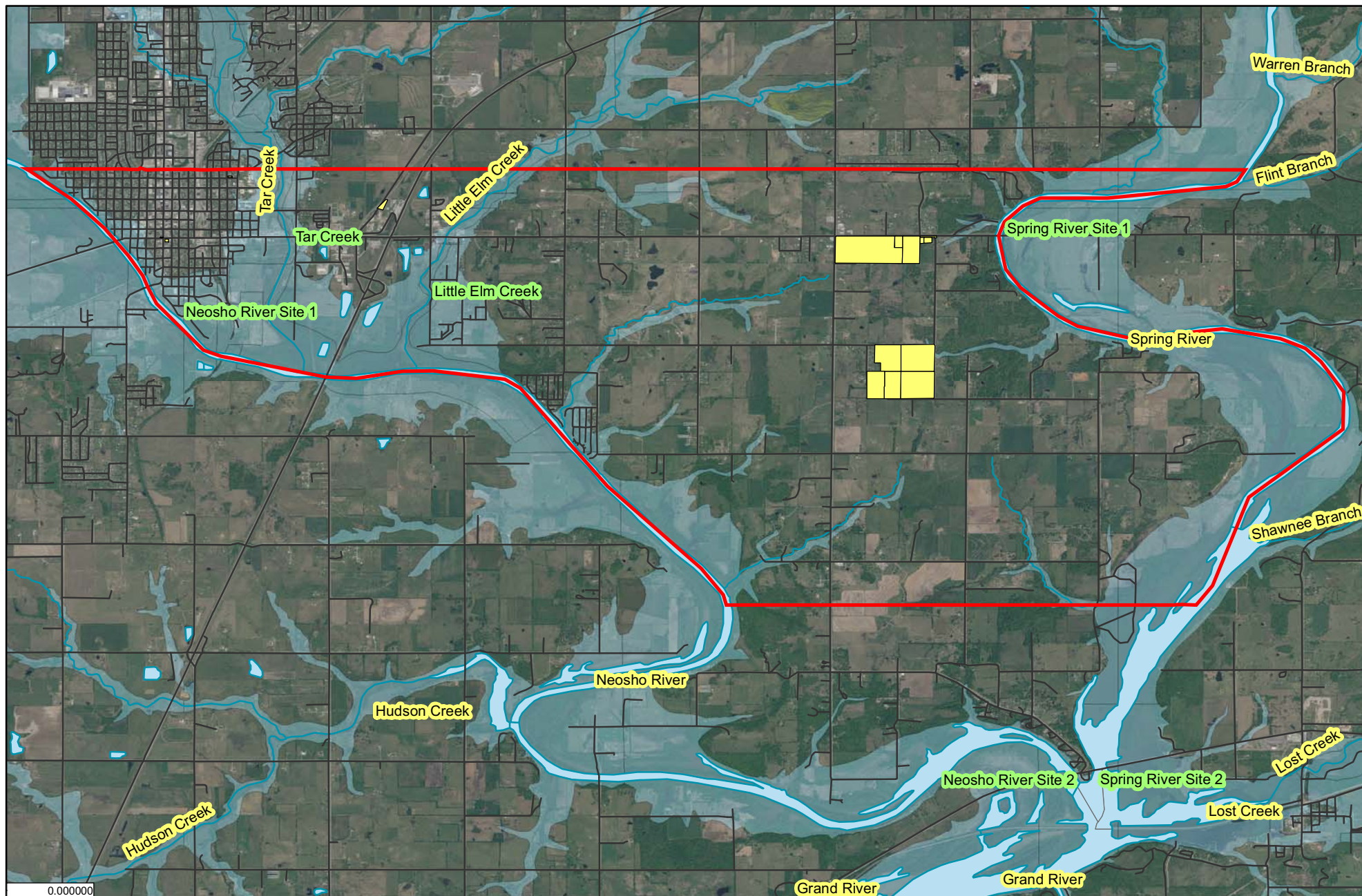
10/27/2008

Sample Site ID	October 07	November 07	January 08	February 08	March 08	July 08	August 08	September 08
Tar Creek	3.00	2.00	2.00	3.00	3.00	3.00	3.00	3.00
Little Elm Creek	4.00	2.00	3.00	3.00	2.00	3.00	3.00	2.00
Neosho River Site 1	3.00	3.00	3.00	3.00	3.00	3.00	3.00	3.00
Neosho River Site 2	3.00	3.00	3.00	3.00	3.00	3.00	3.00	3.00
Spring River Site 1	2.00	3.00	3.00	3.00	3.00	3.00	3.00	3.00
Spring River Site 2	3.00	3.00	5.00	3.00	3.00	3.00	3.00	3.00

Samples were not collected in December 2007 due to ice.

Samples were not collected in April, May, or June 2008 due to flooding.

Ottawa Tribe of Oklahoma  
Environmental Department  
13 South 69 A  
Miami, OK 74335



## Ammonia Nitrogen FY 2007 - 2008 Average

0 450 900 1,800 2,700 3,600 Meters

**Ottawa Tribe of Oklahoma**  
Environmental Department



**Disclaimer:** The Ottawa Tribe of Oklahoma makes no warranty for fitness of use for a particular purpose, express or implied, with respect to this map product. Every reasonable effort has been made to assure the accuracy of the maps and data provided nevertheless, some information may not be accurate. Any user of this map product accepts its faults and assumes all responsibility for the use thereof, and further agrees to hold the Ottawa Tribe harmless from and against any damage, loss or liability.



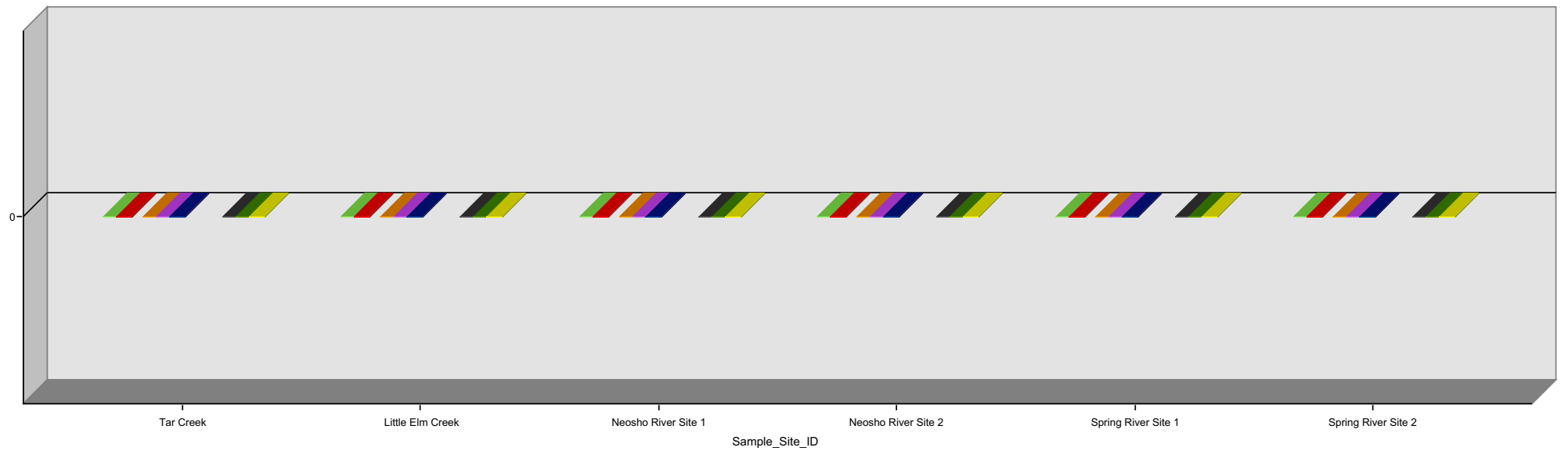
### Contact Information

Drawn By: Lori Bailey

Phone: 918-540-1536

Date: October 28, 2008

Ottawa Tribe Water Program Ammonia Nitrogen (mg/l) Results FY 07 - 08



December 2007 was not sampled due to freezing. April, May and June 2008 were not sampled due to flooding.





## Ammonia Nitrogen Results FY 07 - 08

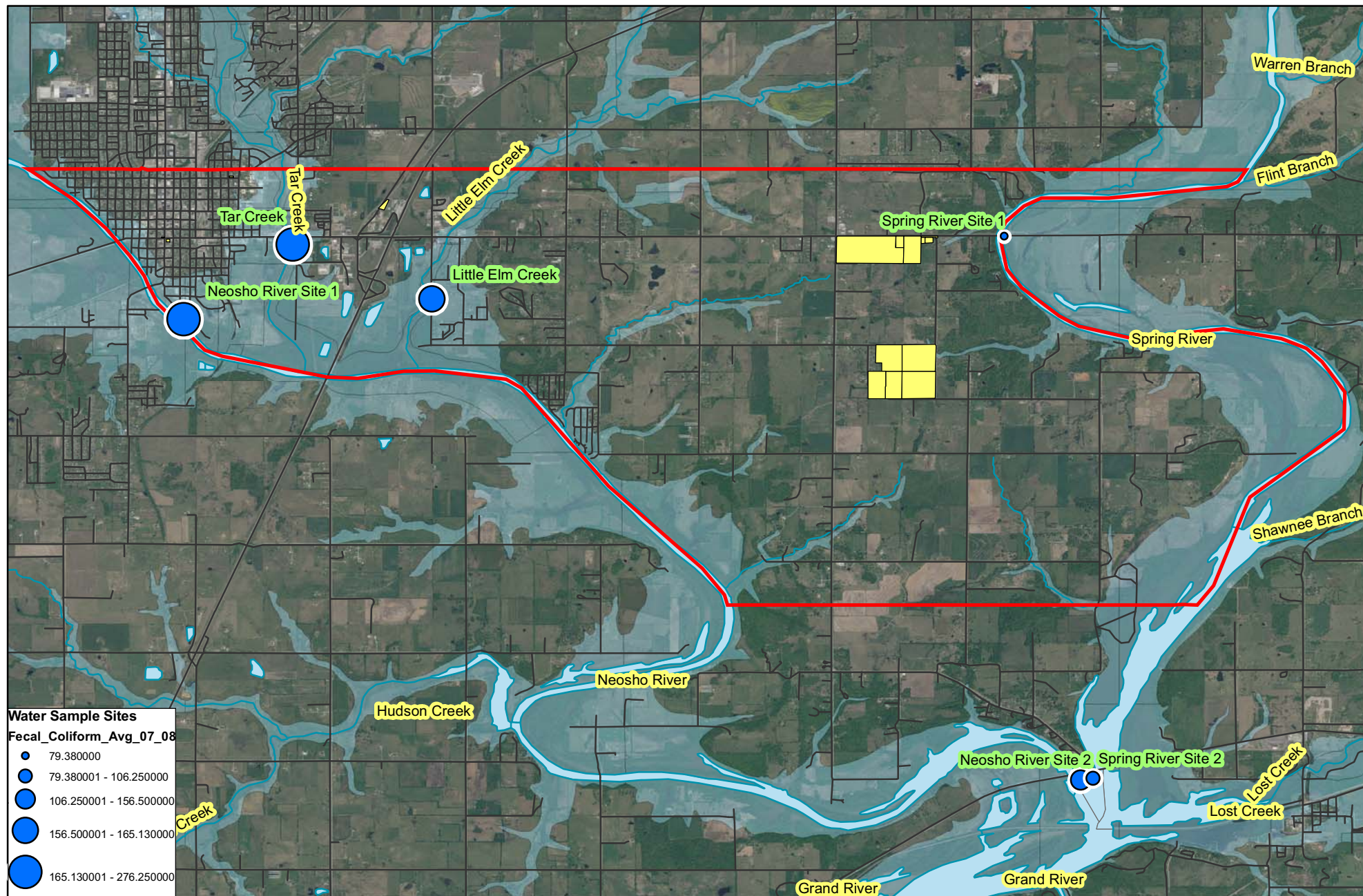
10/27/2008

Sample Site ID	October 07	November 07	January 08	February 08	March 08	July 08	August 08	September 08
Tar Creek	0.00	0.00	0.00	0.00	0.00	0.00	0.00	0.00
Little Elm Creek	0.00	0.00	0.00	0.00	0.00	0.00	0.00	0.00
Neosho River Site 1	0.00	0.00	0.00	0.00	0.00	0.00	0.00	0.00
Neosho River Site 2	0.00	0.00	0.00	0.00	0.00	0.00	0.00	0.00
Spring River Site 1	0.00	0.00	0.00	0.00	0.00	0.00	0.00	0.00
Spring River Site 2	0.00	0.00	0.00	0.00	0.00	0.00	0.00	0.00

Samples were not collected in December 2007 due to ice.

Samples were not collected in April, May, or June 2008 due to flooding.

Ottawa Tribe of Oklahoma  
Environmental Department  
13 South 69 A  
Miami, OK 74335



## Fecal Coliform FY 2007 - 2008 Average

0 445 890 1,780 2,670 3,560 Meters

**Ottawa Tribe of Oklahoma**  
**Environmental Department**



**Disclaimer:** The Ottawa Tribe of Oklahoma makes no warranty for fitness of use for a particular purpose, express or implied, with respect to this map product. Every reasonable effort has been made to assure the accuracy of the maps and data provided nevertheless, some information may not be accurate. Any user of this map product accepts its faults and assumes all responsibility for the use thereof, and further agrees to hold the Ottawa Tribe harmless from and against any damage, loss or liability.



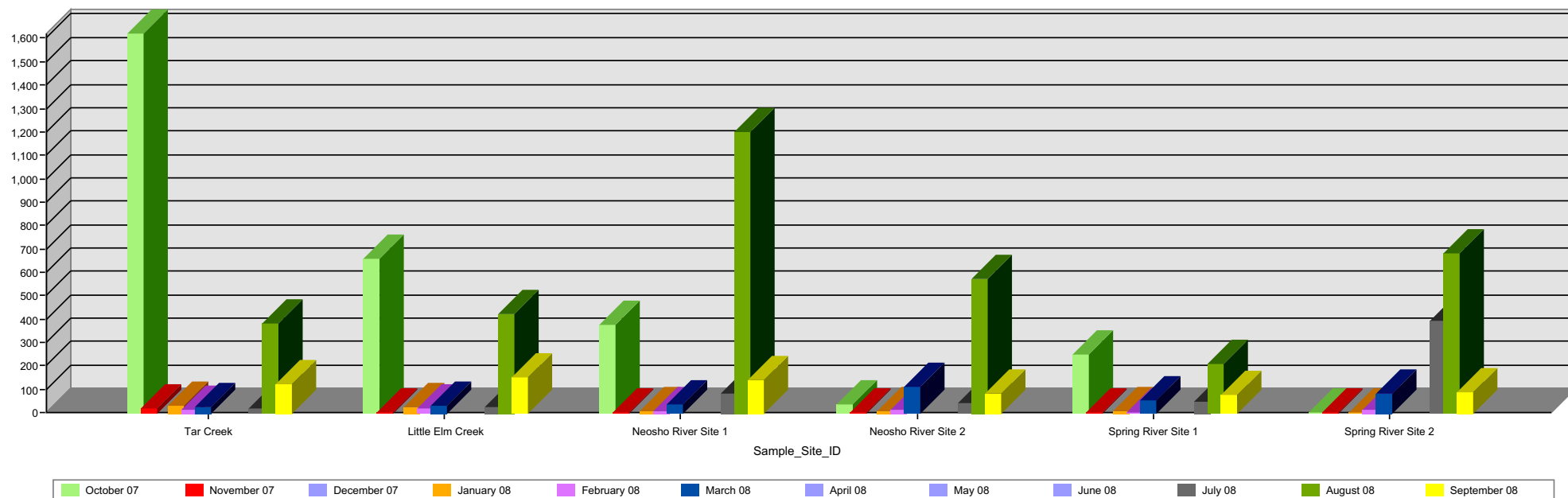
### Contact Information

Drawn By: Lori Bailey

Phone: 918-540-1536

Date: October 28, 2008

Ottawa Tribe Water Program Fecal Coliform (cf 100 ml) Results FY 07 - 08



December 2007 was not sampled due to freezing. April, May and June 2008 were not sampled due to flooding.





## Fecal Coliform Results FY 07 - 08

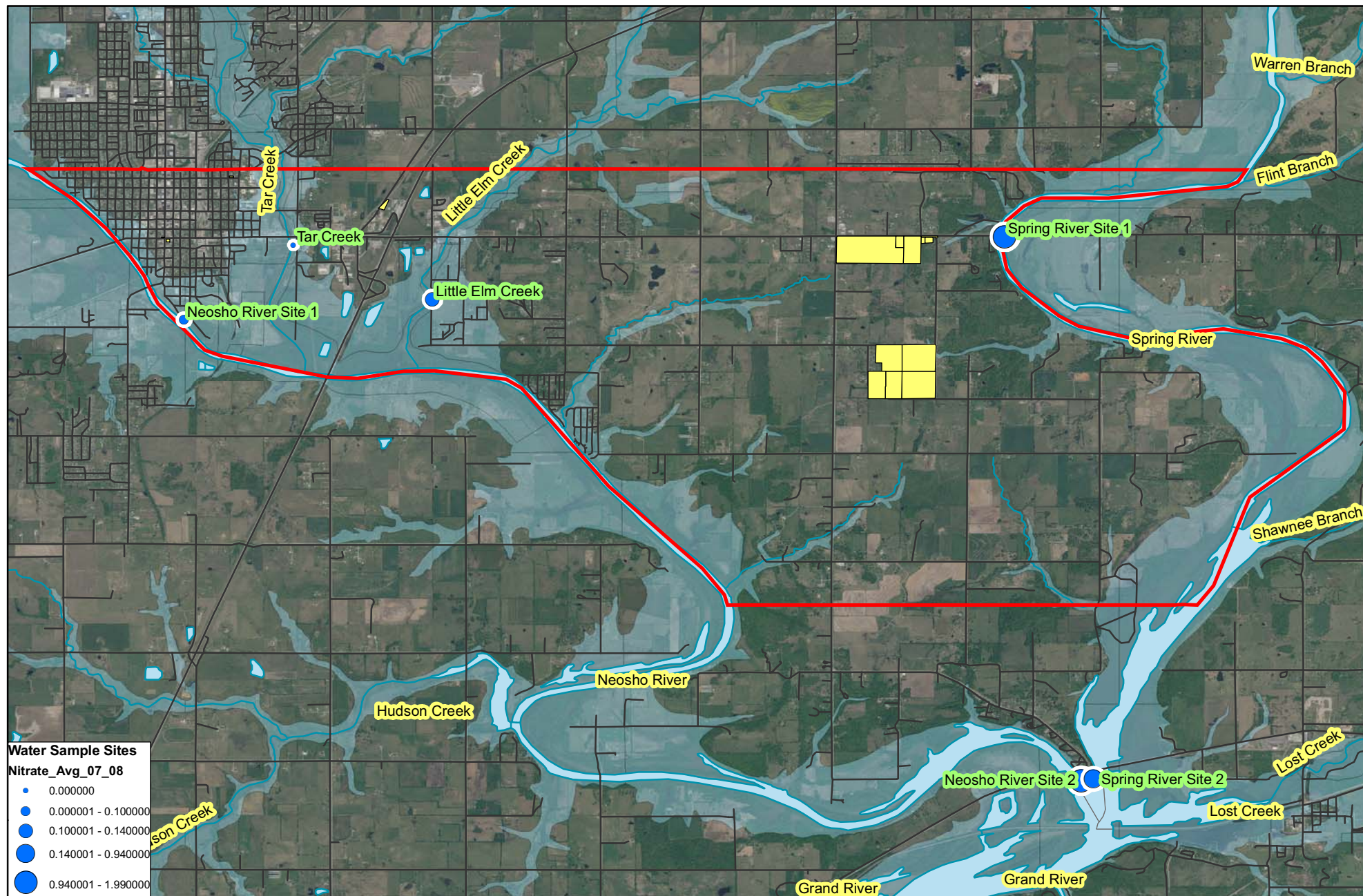
10/27/2008

Sample Site ID	October 07	November 07	January 08	February 08	March 08	July 08	August 08	September 08
Tar Creek	1,620.00	16.00	27.00	9.00	21.00	17.00	380.00	120.00
Little Elm Creek	660.00	0.00	23.00	15.00	30.00	23.00	420.00	150.00
Neosho River Site 1	377.00	0.00	8.00	3.00	36.00	79.00	1,200.00	140.00
Neosho River Site 2	33.00	0.00	4.00	9.00	110.00	42.00	570.00	82.00
Spring River Site 1	246.00	0.00	4.00	0.00	51.00	47.00	210.00	77.00
Spring River Site 2	0.00	0.00	0.00	11.00	82.00	390.00	680.00	89.00

Samples were not collected in December 2007 due to ice.

Samples were not collected in April, May, or June 2008 due to flooding.

Ottawa Tribe of Oklahoma  
Environmental Department  
13 South 69 A  
Miami, OK 74335



### Nitrate FY 2007 - 2008 Average

0 450 900 1,800 2,700 3,600 Meters

**Ottawa Tribe of Oklahoma**  
Environmental Department



**Disclaimer:** The Ottawa Tribe of Oklahoma makes no warranty for fitness of use for a particular purpose, express or implied, with respect to this map product. Every reasonable effort has been made to assure the accuracy of the maps and data provided nevertheless, some information may not be accurate. Any user of this map product accepts its faults and assumes all responsibility for the use thereof, and further agrees to hold the Ottawa Tribe harmless from and against any damage, loss or liability.



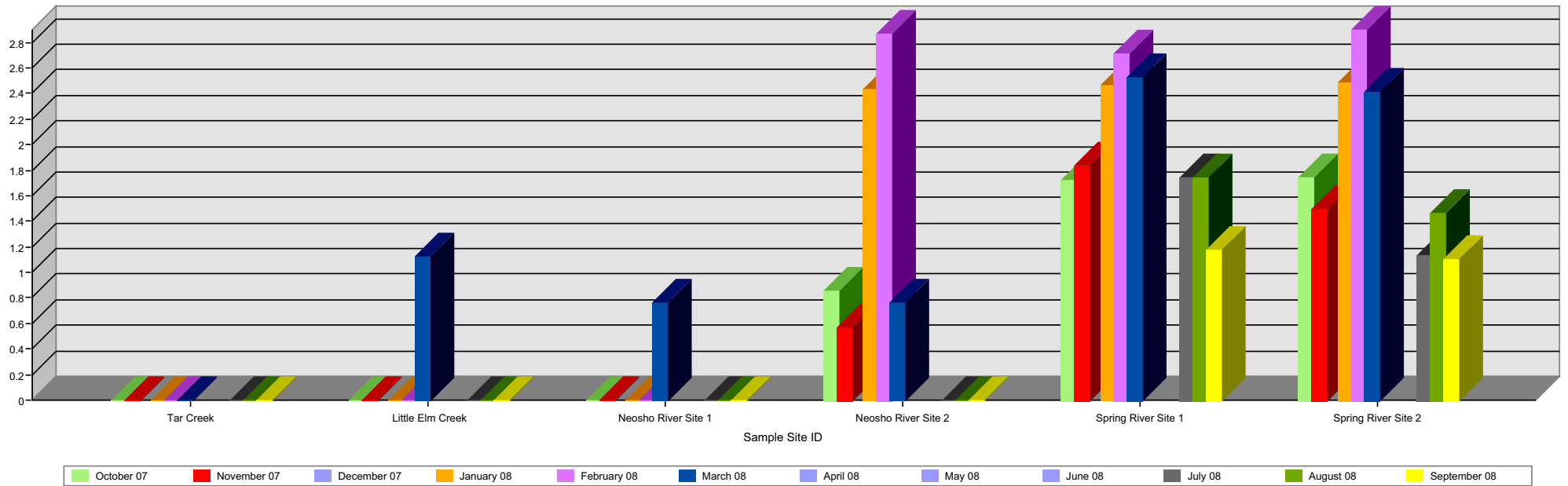
#### Contact Information

Drawn By: Lori Bailey

Phone: 918-540-1536

Date: October 28, 2008

Ottawa Tribe Water Program Nitrate (mg/l) Results FY 07 - 08



December 2007 was not sampled due to freezing. April, May and June 2008 were not sampled due to flooding.





## Nitrate Results (mg/l) FY 07 - 08

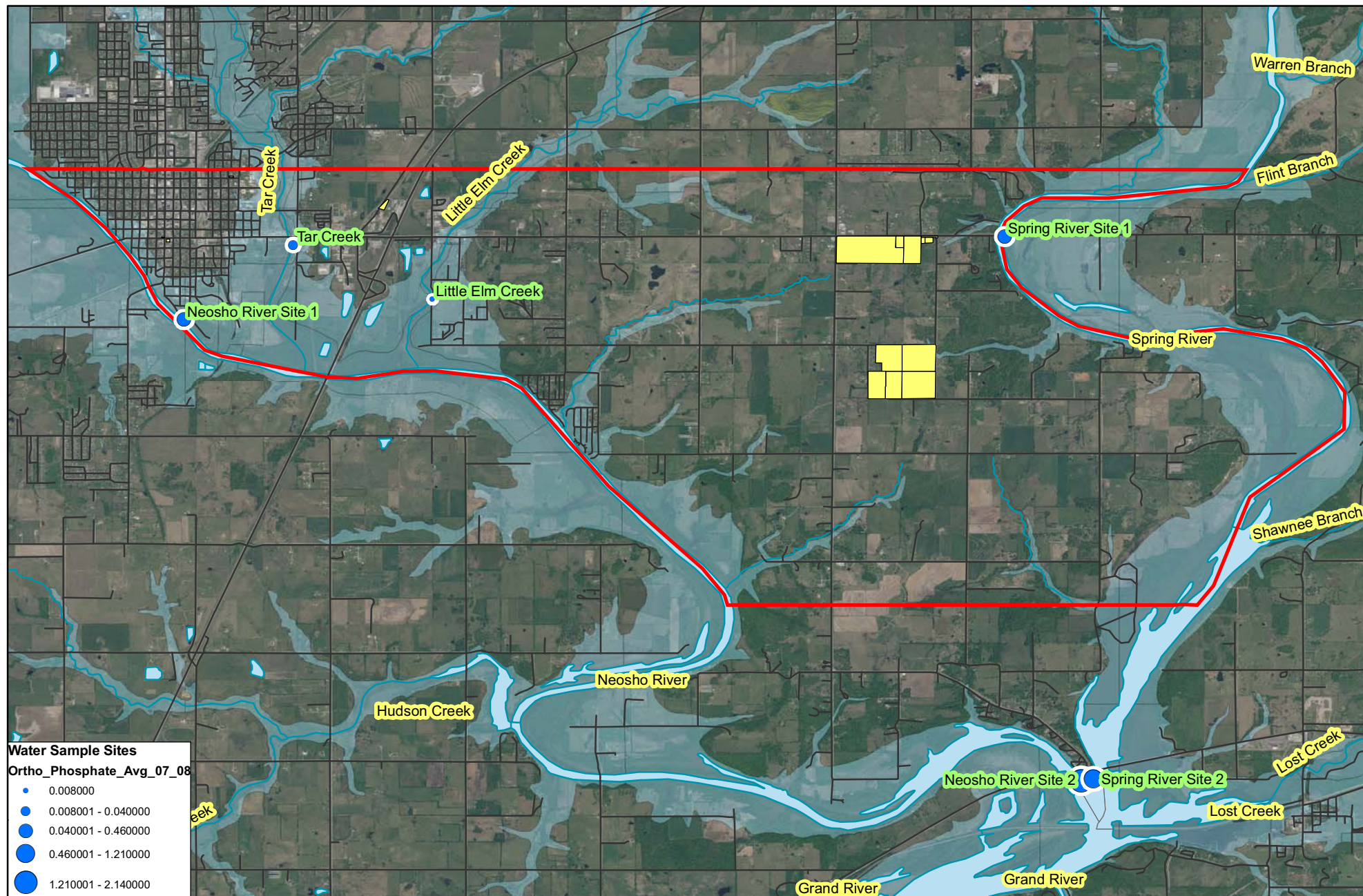
10/27/2008

Sample Site ID	October 07	November 07	January 08	February 08	March 08	July 08	August 08	September 08
Tar Creek	0.00	0.00	0.00	0.00	0.00	0.00	0.00	0.00
Little Elm Creek	0.00	0.00	0.00	0.00	1.12	0.00	0.00	0.00
Neosho River Site 1	0.00	0.00	0.00	0.00	0.76	0.00	0.00	0.00
Neosho River Site 2	0.85	0.57	2.44	2.87	0.76	0.00	0.00	0.00
Spring River Site 1	1.72	1.84	2.47	2.71	2.53	1.74	1.74	1.18
Spring River Site 2	1.74	1.50	2.49	2.90	2.42	1.14	1.47	1.10

Samples were not collected in December 2007 due to ice.

Samples were not collected in April, May, or June 2008 due to flooding.

Ottawa Tribe of Oklahoma  
Environmental Department  
13 South 69 A  
Miami, OK 74335



## Ortho Phosphate FY 2007 - 2008 Average

0 450 900 1,800 2,700 3,600 Meters

**Ottawa Tribe of Oklahoma**  
Environmental Department



**Disclaimer:** The Ottawa Tribe of Oklahoma makes no warranty for fitness of use for a particular purpose, express or implied, with respect to this map product. Every reasonable effort has been made to assure the accuracy of the maps and data provided nevertheless, some information may not be accurate. Any user of this map product accepts its faults and assumes all responsibility for the use thereof, and further agrees to hold the Ottawa Tribe harmless from and against any damage, loss or liability.



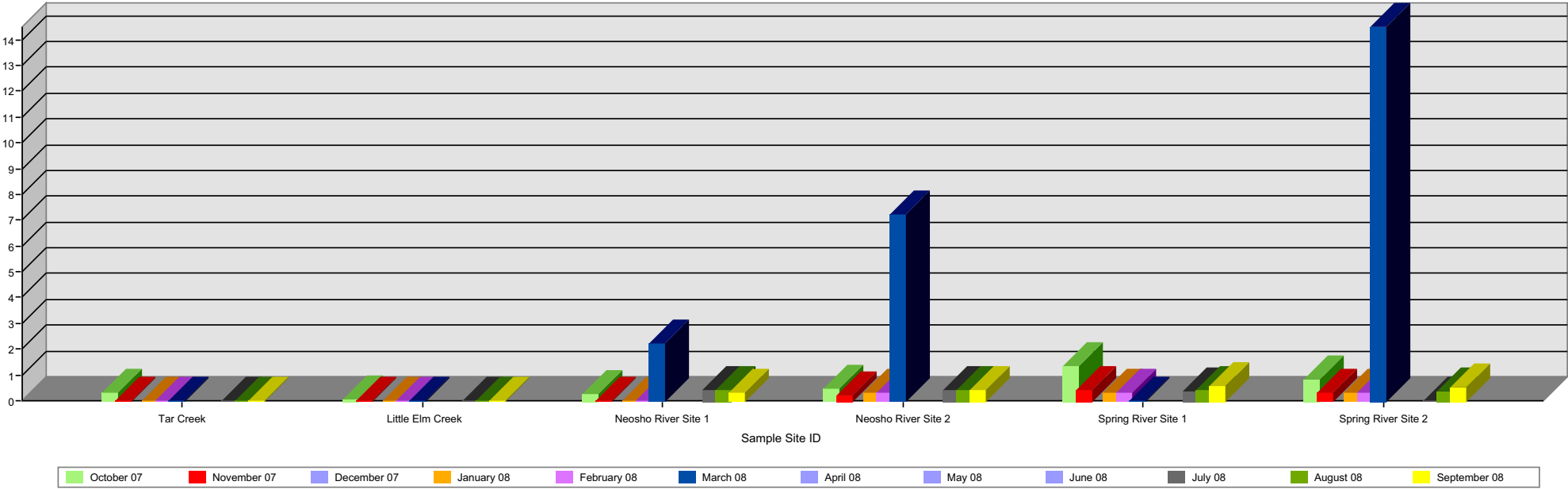
### Contact Information

Drawn By: Lori Bailey

Phone: 918-540-1536

Date: October 28, 2008

Ottawa Tribe Water Program Ortho Phosphate (mg/l) Results FY 07 - 08



December 2007 was not sampled due to freezing. April, May and June 2008 were not sampled due to flooding.





## Ortho Phosphate Results FY 07 - 08

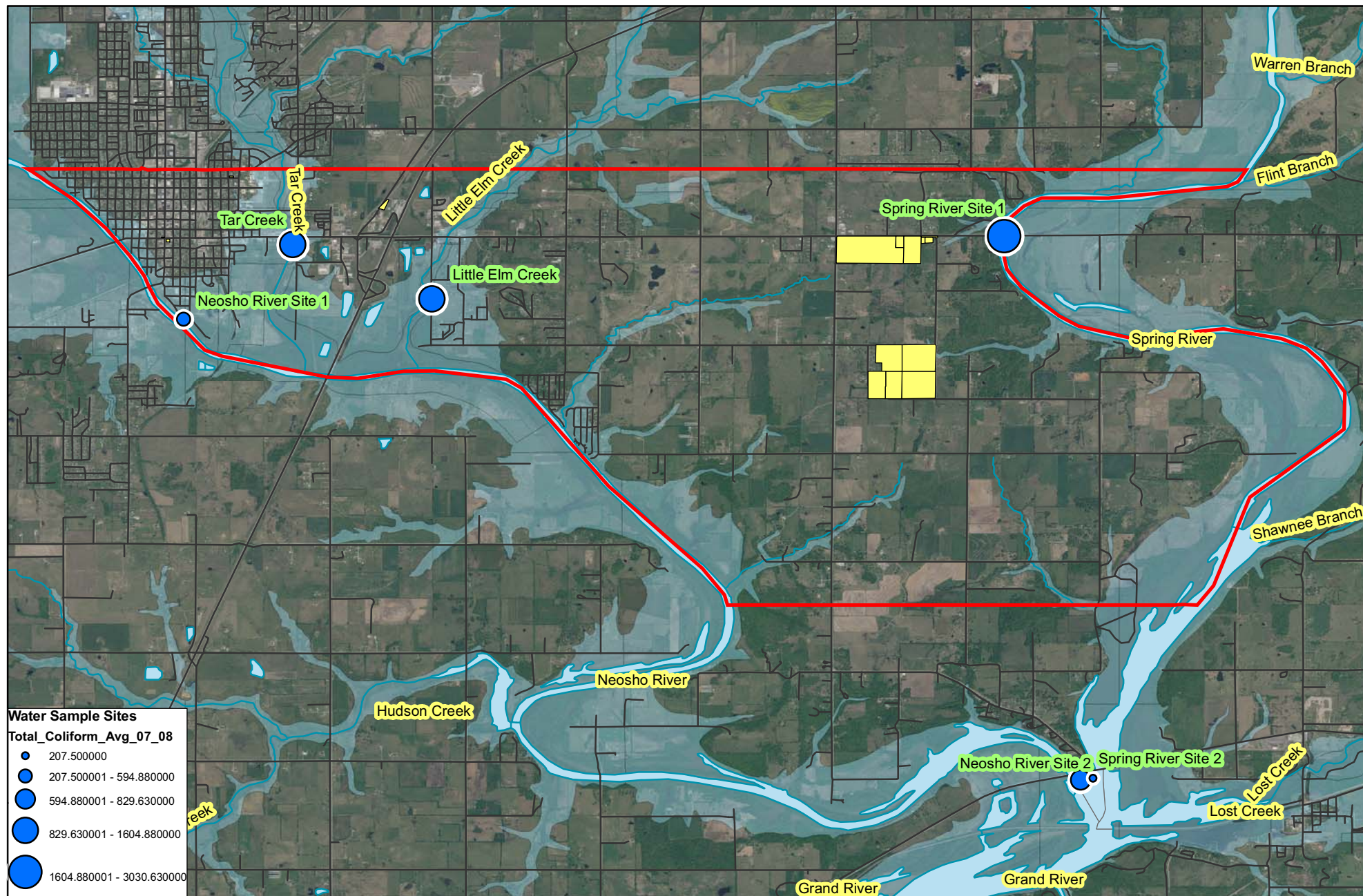
10/27/2008

Sample Site ID	October 07	November 07	January 08	February 08	March 08	July 08	August 08	September 08
Tar Creek	0.29	0.00	0.00	0.00	0.00	0.00	0.00	0.00
Little Elm Creek	0.06	0.00	0.00	0.00	0.00	0.00	0.00	0.00
Neosho River Site 1	0.27	0.00	0.00	0.00	2.22	0.41	0.39	0.32
Neosho River Site 2	0.46	0.20	0.31	0.32	7.20	0.42	0.39	0.39
Spring River Site 1	1.35	0.41	0.30	0.31	0.00	0.34	0.43	0.56
Spring River Site 2	0.82	0.33	0.31	0.31	14.50	0.00	0.37	0.50

Samples were not collected in December 2007 due to ice.

Samples were not collected in April, May, or June 2008 due to flooding.

Ottawa Tribe of Oklahoma  
Environmental Department  
13 South 69 A  
Miami, OK 74335



## Total Coliform FY 2007 - 2008 Average

0 445 890 1,780 2,670 3,560 Meters

**Ottawa Tribe of Oklahoma**  
Environmental Department



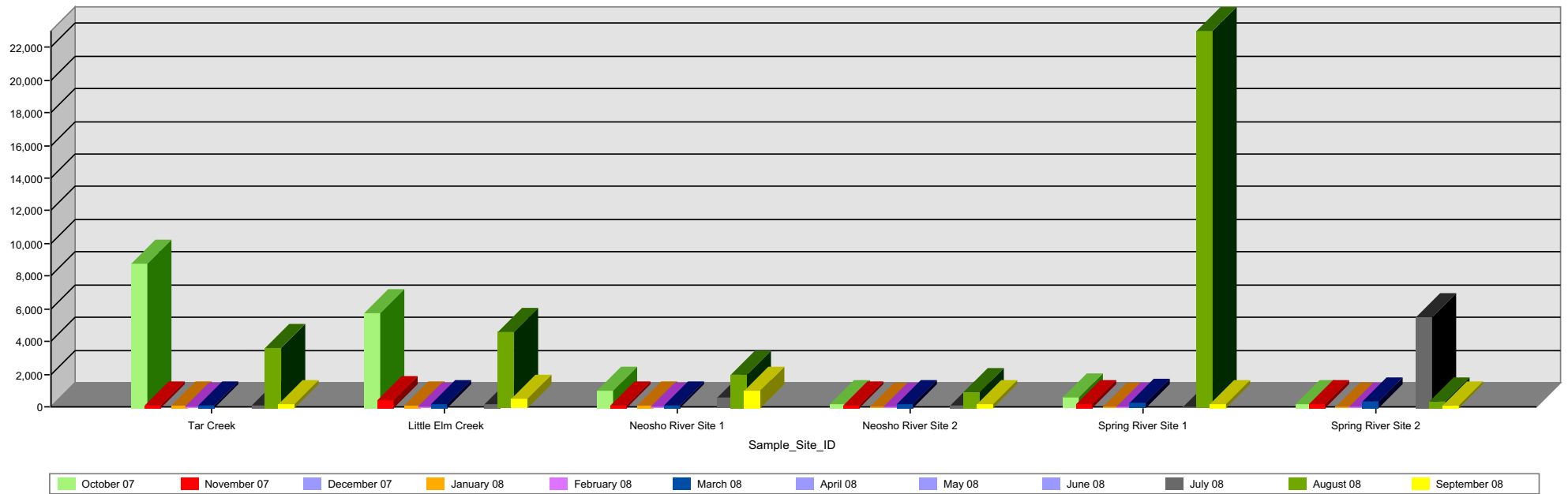
**Disclaimer:** The Ottawa Tribe of Oklahoma makes no warranty for fitness of use for a particular purpose, express or implied, with respect to this map product. Every reasonable effort has been made to assure the accuracy of the maps and data provided nevertheless, some information may not be accurate. Any user of this map product accepts its faults and assumes all responsibility for the use thereof, and further agrees to hold the Ottawa Tribe harmless from and against any damage, loss or liability.



### Contact Information

Design By: Lori Bailey  
Phone: 918-540-1536  
Date: October 28, 2008

Ottawa Tribe Water Program Total Coliform (cf 100 ml) Results FY 07 - 08



December 2007 was not sampled due to freezing. April, May and June 2008 were not sampled due to flooding.





## Total Coliform Results FY 07 - 08

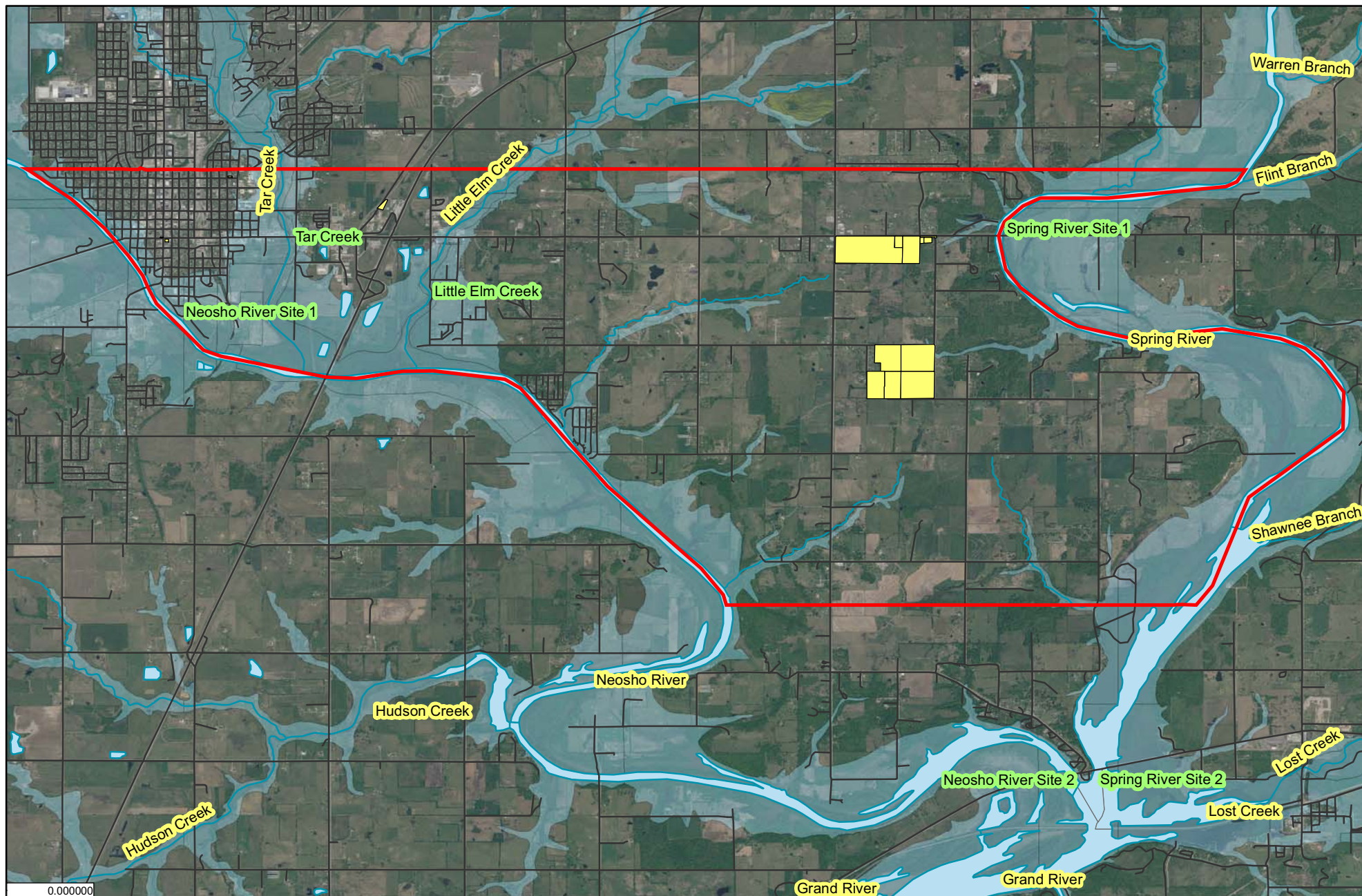
10/27/2008

Sample Site ID	October 07	November 07	January 08	February 08	March 08	July 08	August 08	September 08
Tar Creek	8,730.00	98.00	46.00	14.00	41.00	110.00	3,600.00	200.00
Little Elm Creek	5,700.00	420.00	81.00	27.00	130.00	130.00	4,600.00	500.00
Neosho River Site 1	980.00	98.00	77.00	18.00	46.00	540.00	2,000.00	1,000.00
Neosho River Site 2	131.00	115.00	35.00	9.00	170.00	100.00	900.00	200.00
Spring River Site 1	600.00	180.00	27.00	6.00	220.00	32.00	23,000.00	180.00
Spring River Site 2	180.00	197.00	23.00	27.00	290.00	5,500.00	300.00	120.00

Samples were not collected in December 2007 due to ice.

Samples were not collected in April, May, or June 2008 due to flooding.

Ottawa Tribe of Oklahoma  
Environmental Department  
13 South 69 A  
Miami, OK 74335



## Cadmium FY 2007 - 2008 Average

0 450 900 1,800 2,700 3,600 Meters

**Ottawa Tribe of Oklahoma**  
Environmental Department



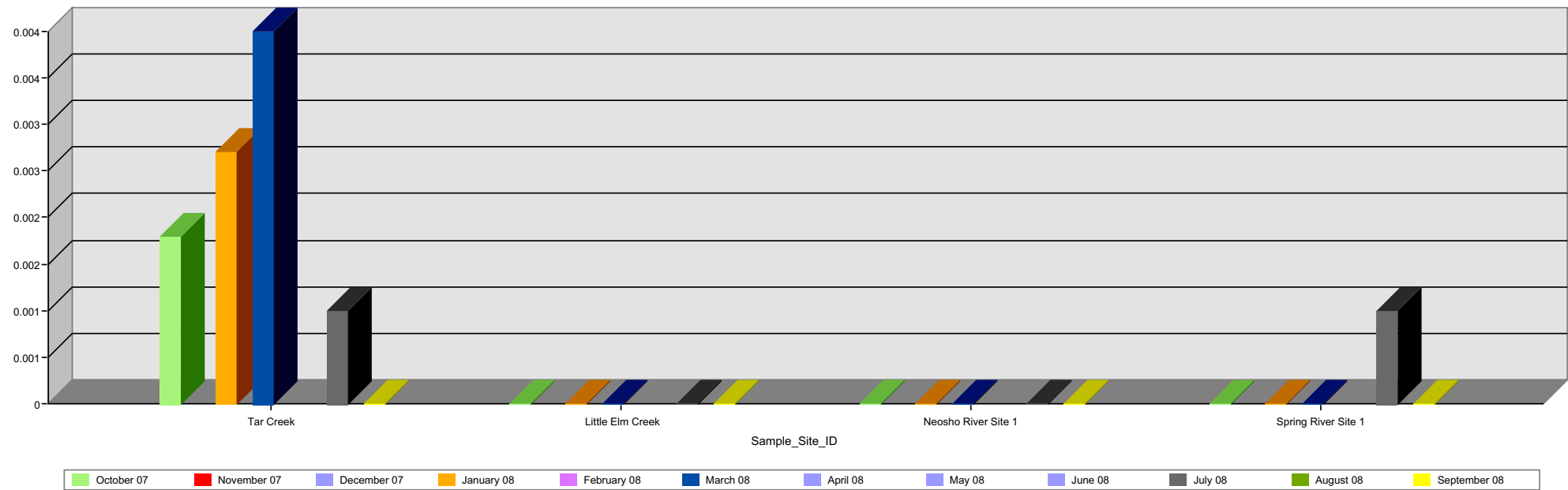
**Disclaimer:** The Ottawa Tribe of Oklahoma makes no warranty for fitness of use for a particular purpose, express or implied, with respect to this map product. Every reasonable effort has been made to assure the accuracy of the maps and data provided nevertheless, some information may not be accurate. Any user of this map product accepts its faults and assumes all responsibility for the use thereof, and further agrees to hold the Ottawa Tribe harmless from and against any damage, loss or liability.



### Contact Information

Drawn By: Lori Bailey  
Phone: 918-540-1536  
Date: October 28, 2008

Ottawa Tribe Water Program Cadmium (mg/l) Results FY 07 - 08



December 2007 was not sampled due to freezing. April, May and June 2008 were not sampled due to flooding.





## Cadmium Results (mg/l) FY 07 - 08

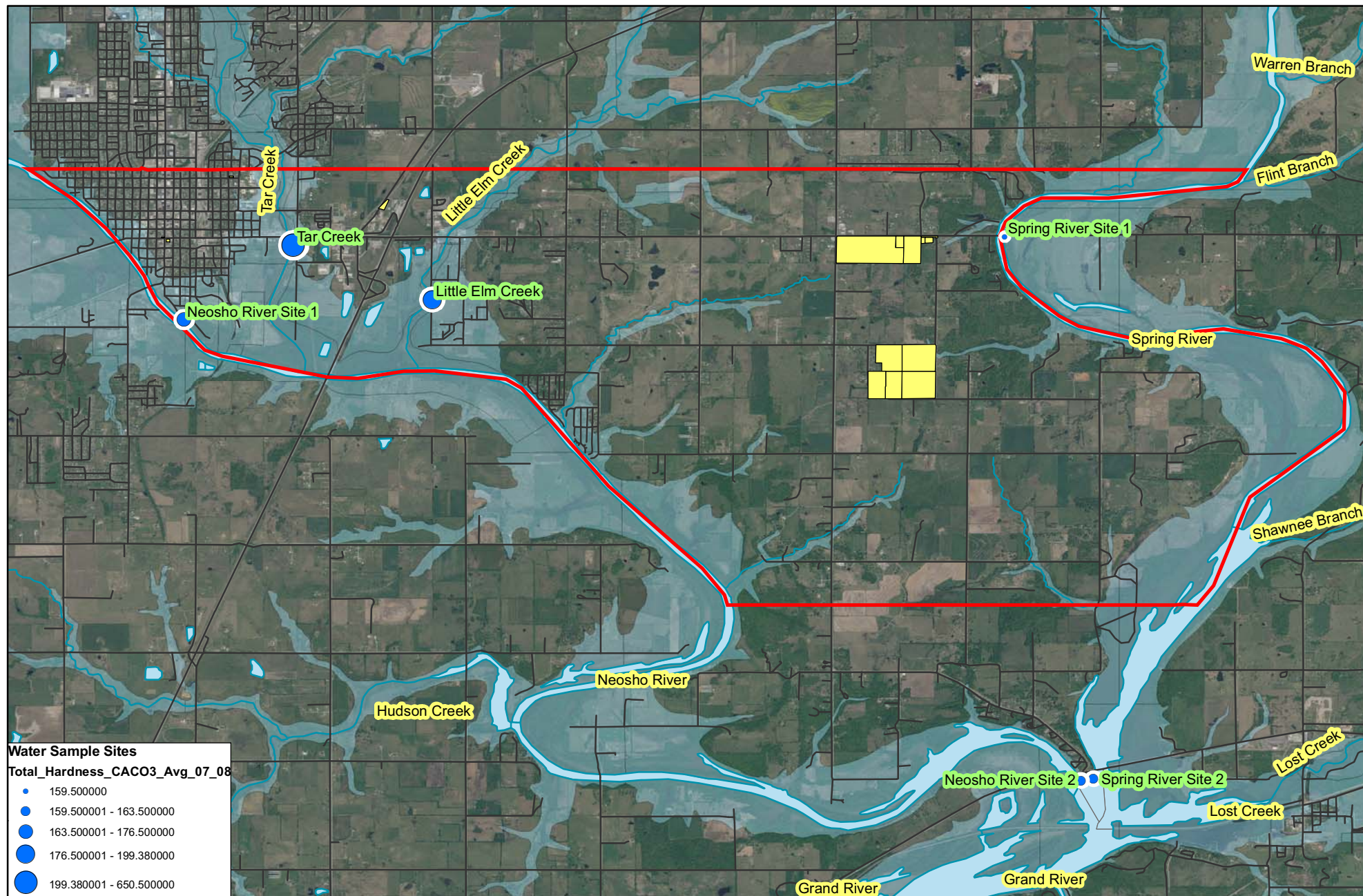
10/27/2008

Sample Site ID	October 07	November 07	January 08	February 08	March 08	July 08	August 08	September 08
Tar Creek	0.00		0.00		0.00	0.00		0.00
Little Elm Creek	0.00		0.00		0.00	0.00		0.00
Neosho River Site 1	0.00		0.00		0.00	0.00		0.00
Neosho River Site 2								
Spring River Site 1	0.00		0.00		0.00	0.00		0.00
Spring River Site 2								

Samples were not collected in December 2007 due to ice.

Samples were not collected in April, May, or June 2008 due to flooding.

Ottawa Tribe of Oklahoma  
Environmental Department  
13 South 69 A  
Miami, OK 74335



## Total Hardness CACO3 FY 2007 - 2008 Average

0 450 900 1,800 2,700 3,600 Meters

**Ottawa Tribe of Oklahoma**  
**Environmental Department**



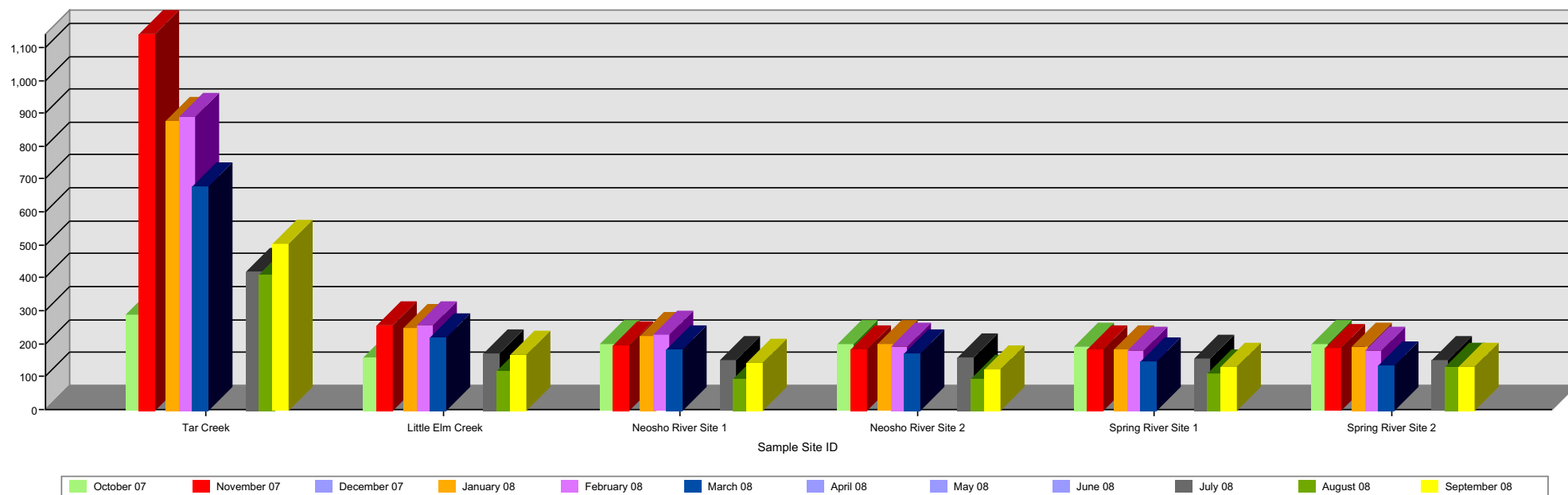
**Disclaimer:** The Ottawa Tribe of Oklahoma makes no warranty for fitness of use for a particular purpose, express or implied, with respect to this map product. Every reasonable effort has been made to assure the accuracy of the maps and data provided nevertheless, some information may not be accurate. Any user of this map product accepts its faults and assumes all responsibility for the use thereof, and further agrees to hold the Ottawa Tribe harmless from and against any damage, loss or liability.



### Contact Information

Drawn By: Lori Bailey  
 Phone: 918-540-1536  
 Date: October 28, 2008

Ottawa Tribe Water Program Total Hardness as CaCO3 (mg/l) Results FY 07 - 08



December 2007 was not sampled due to freezing. April, May and June 2008 were not sampled due to flooding.





## Total Hardness Results FY 07 - 08

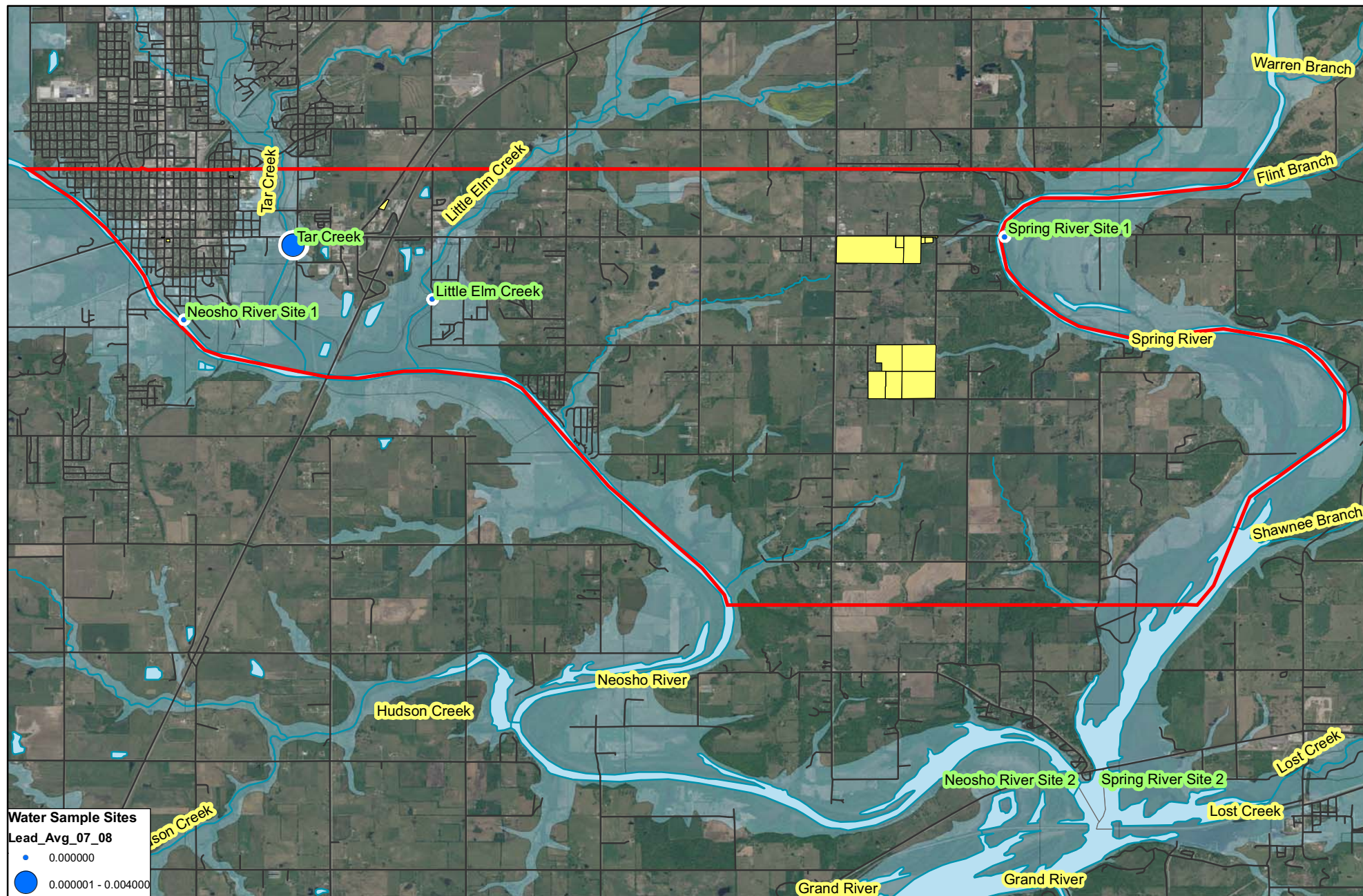
10/27/2008

Sample Site ID	October 07	November 07	January 08	February 08	March 08	July 08	August 08	September 08
Tar Creek	290.00	1,140.00	878.00	888.00	676.00	418.00	410.00	504.00
Little Elm Creek	160.00	256.00	248.00	255.00	220.00	170.00	118.00	168.00
Neosho River Site 1	200.00	196.00	223.00	227.00	182.00	152.00	92.00	140.00
Neosho River Site 2	200.00	182.00	197.00	189.00	170.00	158.00	92.00	120.00
Spring River Site 1	190.00	182.00	184.00	178.00	146.00	156.00	110.00	130.00
Spring River Site 2	200.00	188.00	192.00	179.00	134.00	150.00	130.00	130.00

Samples were not collected in December 2007 due to ice.

Samples were not collected in April, May, or June 2008 due to flooding.

Ottawa Tribe of Oklahoma  
Environmental Department  
13 South 69 A  
Miami, OK 74335



## Lead FY 2007 - 2008 Average

0 455 910 1,820 2,730 3,640  
Meters

**Ottawa Tribe of Oklahoma**  
**Environmental Department**



**Disclaimer:** The Ottawa Tribe of Oklahoma makes no warranty for fitness of use for a particular purpose, express or implied, with respect to this map product. Every reasonable effort has been made to assure the accuracy of the maps and data provided nevertheless, some information may not be accurate. Any user of this map product accepts its faults and assumes all responsibility for the use thereof, and further agrees to hold the Ottawa Tribe harmless from and against any damage, loss or liability.



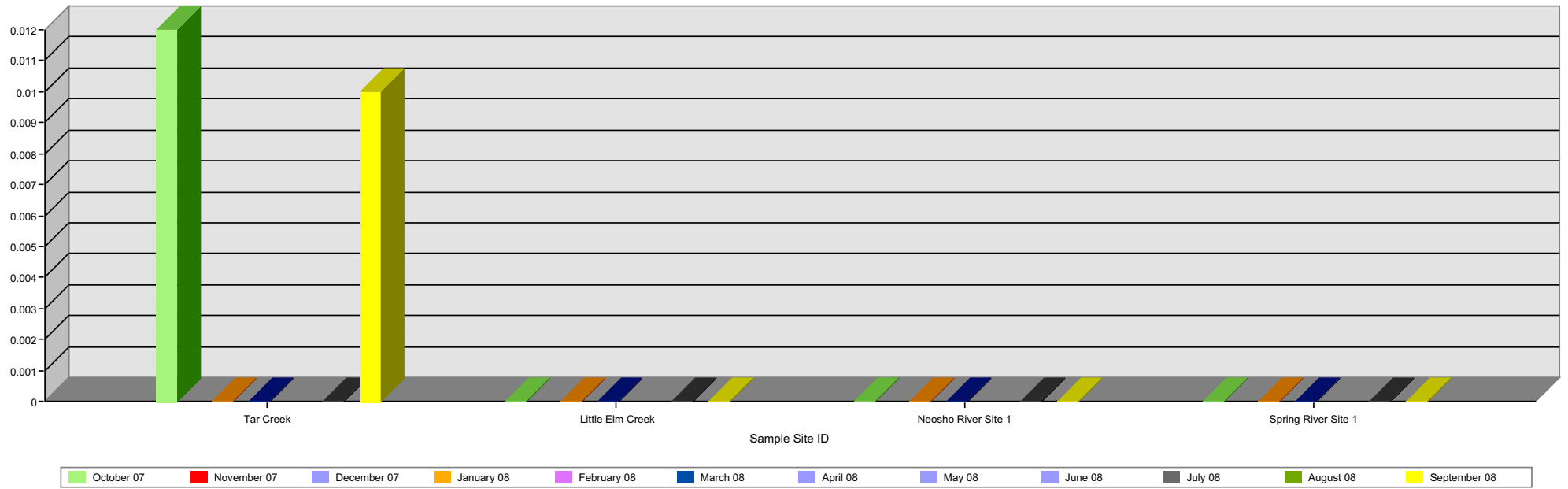
### Contact Information

Drawn By: Lori Bailey

Phone: 918-540-1536

Date: October 28, 2008

Ottawa Tribe Water Program Lead (mgl) Results FY 07 - 08



December 2007 was not sampled due to freezing. April, May and June 2008 were not sampled due to flooding.





## Lead Results FY 07 - 08

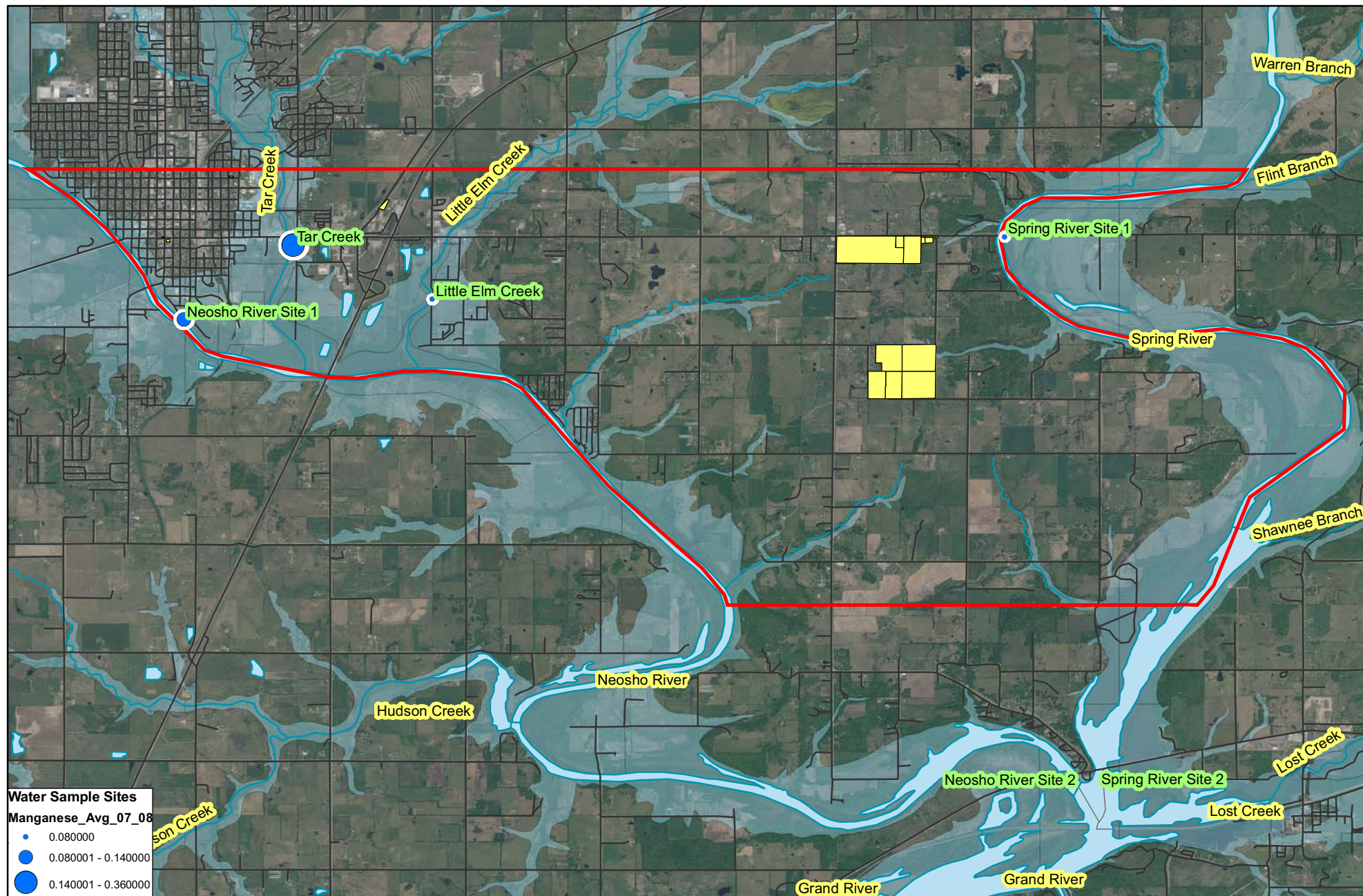
10/27/2008

Sample Site ID	October 07	November 07	January 08	February 08	March 08	July 08	August 08	September 08
Tar Creek	0.01		0.00		0.00	0.00		0.01
Little Elm Creek	0.00		0.00		0.00	0.00		0.00
Neosho River Site 1	0.00		0.00		0.00	0.00		0.00
Neosho River Site 2								
Spring River Site 1	0.00		0.00		0.00	0.00		0.00
Spring River Site 2								

Samples were not collected in December 2007 due to ice.

Samples were not collected in April, May, or June 2008 due to flooding.

Ottawa Tribe of Oklahoma  
Environmental Department  
13 South 69 A  
Miami, OK 74335



## Manganese FY 2007 - 2008 Average

0 450 900 1,800 2,700 3,600  
 Meters

**Ottawa Tribe of Oklahoma**  
 Environmental Department



**Disclaimer:** The Ottawa Tribe of Oklahoma makes no warranty for fitness of use for a particular purpose, express or implied, with respect to this map product. Every reasonable effort has been made to assure the accuracy of the maps and data provided nevertheless, some information may not be accurate. Any user of this map product accepts its faults and assumes all responsibility for the use thereof, and further agrees to hold the Ottawa Tribe harmless from and against any damage, loss or liability.



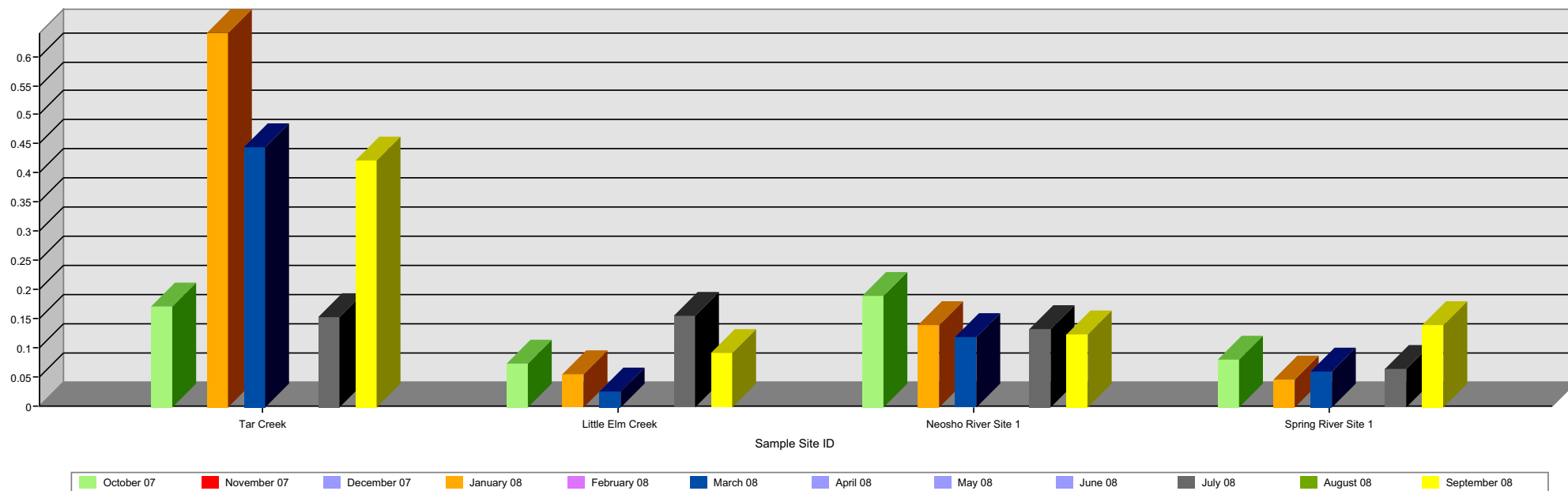
### Contact Information

Design By: Lori Bailey

Phone: 918-540-1536

Date: October 28, 2008

Ottawa Tribe Water Program Manganese (mg/l) Results FY 07 - 08



December 2007 was not sampled due to freezing. April, May and June 2008 were not sampled due to flooding.





## Manganese Results FY 07 - 08

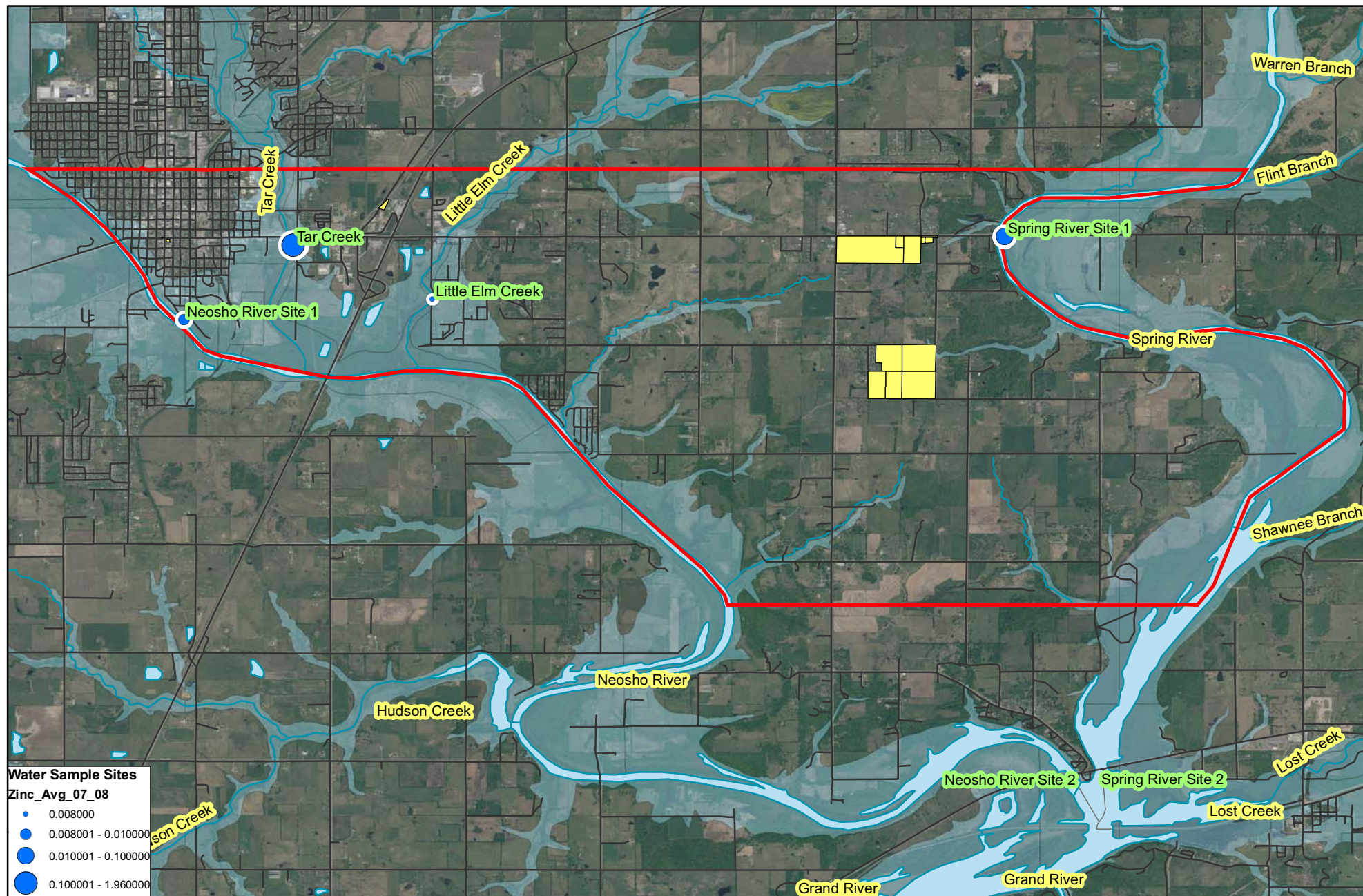
10/27/2008

Sample Site ID	October 07	November 07	January 08	February 08	March 08	July 08	August 08	September 08
Tar Creek	0.17		0.64		0.44	0.15		0.42
Little Elm Creek	0.07		0.06		0.02	0.16		0.09
Neosho River Site 1	0.19		0.14		0.12	0.13		0.12
Neosho River Site 2								
Spring River Site 1	0.08		0.05		0.06	0.06		0.14
Spring River Site 2								

Samples were not collected in December 2007 due to ice.

Samples were not collected in April, May, or June 2008 due to flooding.

Ottawa Tribe of Oklahoma  
Environmental Department  
13 South 69 A  
Miami, OK 74335



## Zinc FY 2007 - 2008 Average

0 455 910 1,820 2,730 3,640  
Meters

**Ottawa Tribe of Oklahoma**  
Environmental Department



**Disclaimer:** The Ottawa Tribe of Oklahoma makes no warranty for fitness of use for a particular purpose, express or implied, with respect to this map product. Every reasonable effort has been made to assure the accuracy of the maps and data provided nevertheless, some information may not be accurate. Any user of this map product accepts its faults and assumes all responsibility for the use thereof, and further agrees to hold the Ottawa Tribe harmless from and against any damage, loss or liability.



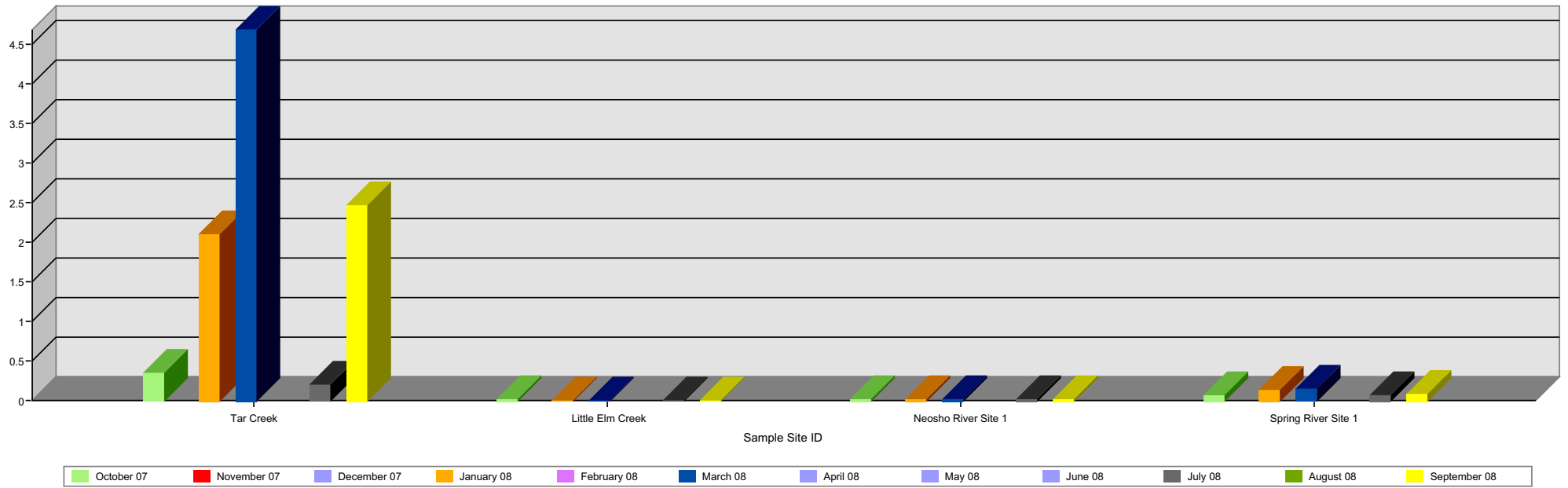
### Contact Information

Drawn By: Lori Bailey

Phone: 918-540-1536

Date: October 28, 2008

Ottawa Tribe Water Program Zinc (mg/l) Results FY 07 - 08



December 2007 was not sampled due to freezing. April, May and June 2008 were not sampled due to flooding.





## Zinc Results (mg/l) FY 07 - 08

10/27/2008

Sample Site ID	October 07	November 07	January 08	February 08	March 08	July 08	August 08	September 08
Tar Creek	0.35		2.10		4.68	0.21		2.46
Little Elm Creek	0.01		0.01		0.00	0.01		0.01
Neosho River Site 1	0.01		0.01		0.02	0.02		0.01
Neosho River Site 2								
Spring River Site 1	0.07		0.13		0.15	0.06		0.09
Spring River Site 2								

Samples were not collected in December 2007 due to ice.

Samples were not collected in April, May, or June 2008 due to flooding.

Ottawa Tribe of Oklahoma  
Environmental Department  
13 South 69 A  
Miami, OK 74335