



Air Temperature Results (Degrees Fahrenheit) FY 09-10

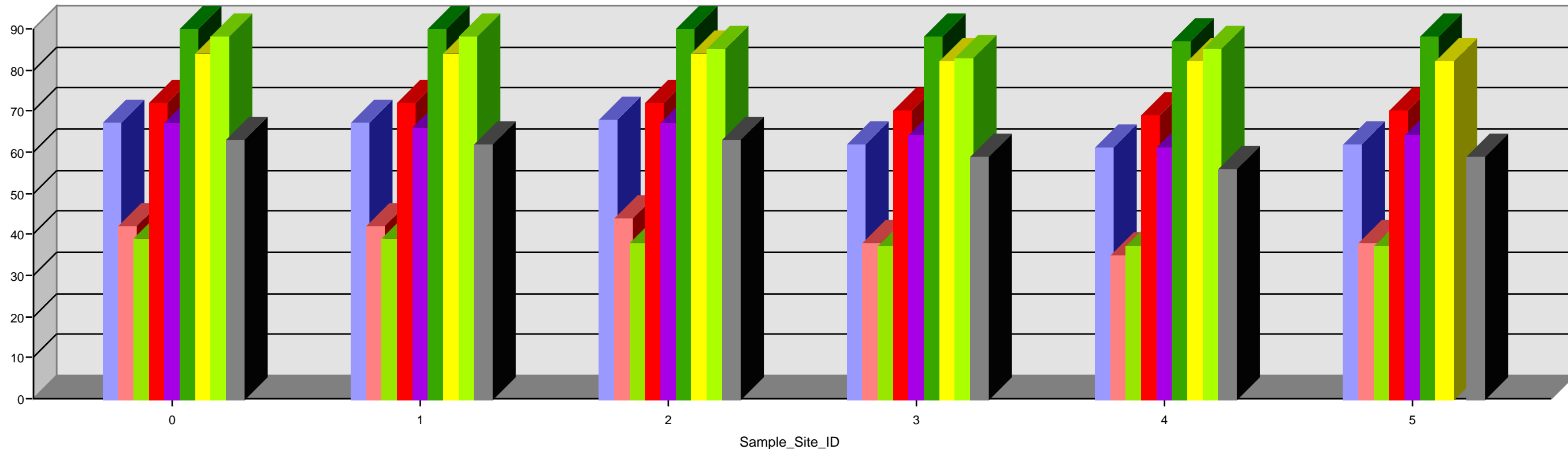
10/29/2010

Sample Site ID	November 09	December 09	January 10	March 10	April 10	June 10	July 10	August 10	September 10
Tar Creek	67.00	42.00	39.00	72.00	67.00	84.00	90.00	88.00	63.00
Little Elm Creek	67.00	42.00	39.00	72.00	66.00	84.00	90.00		62.00
Neosho River Site 1	68.00	44.00	38.00	72.00	67.00	84.00	90.00	88.00	63.00
Neosho River Site 2	62.00	38.00	37.00	70.00	64.00	82.00	88.00	85.00	59.00
Spring River Site 1	61.00	35.00	37.00	69.00	61.00	82.00	87.00	83.00	56.00
Spring River Site 2	62.00	38.00	37.00	70.00	64.00	82.00	88.00	85.00	59.00

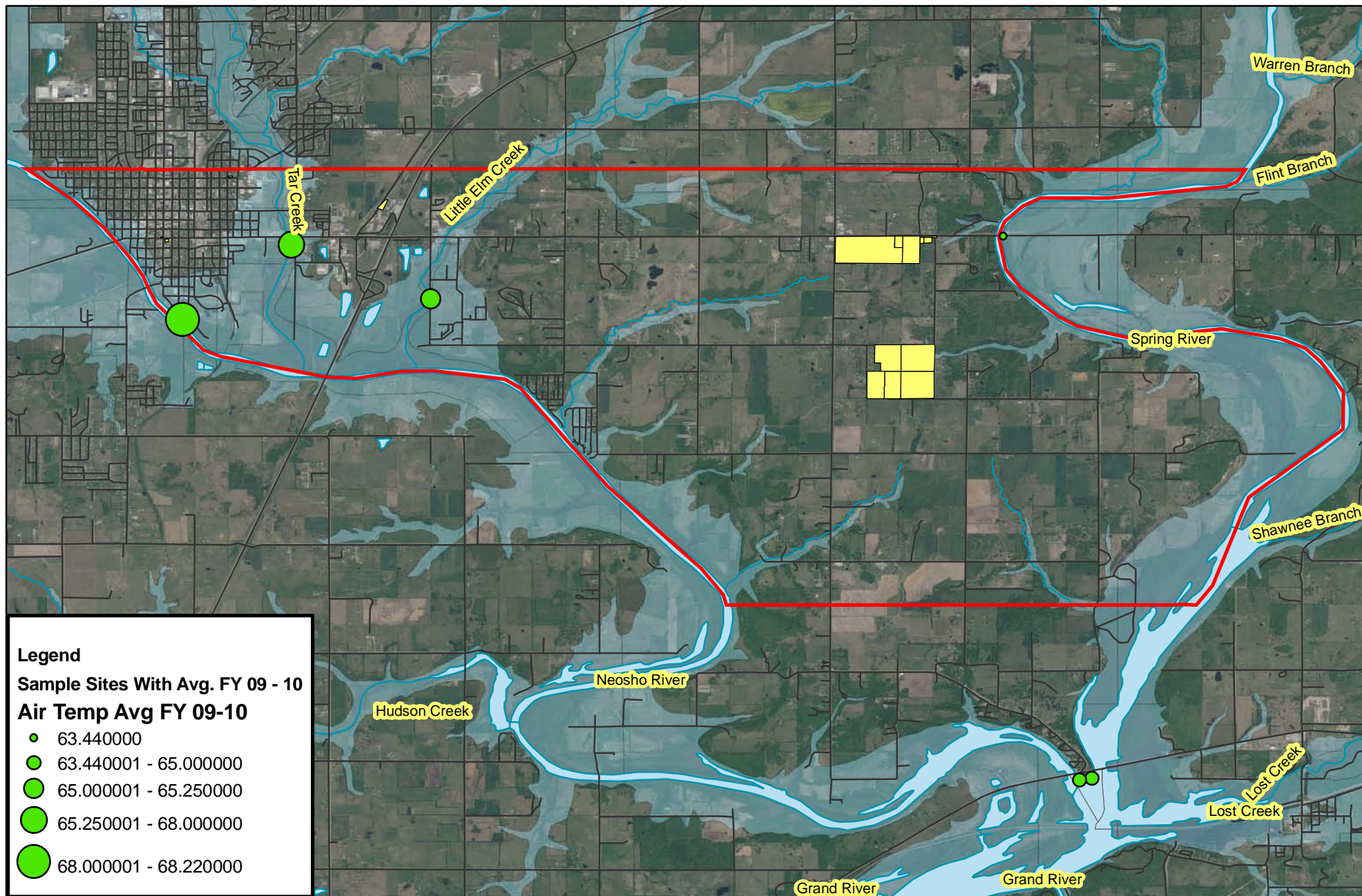
Samples were not collected in October, 2009 due to flooding and in February & May of 2010 due to weather conditions.

Ottawa Tribe of Oklahoma
Environmental Department
10 N 69 A
Miami, OK 74354
918-541-1902

Air Temperature (Degrees Fahrenheit) FY 09-10



Samples were not collected in October, 2009 due to flooding and in February & May of 2010 due to weather conditions.



Air Temperature (Degrees F) FY 2009 - 2010 Average

0 455 910 1,820 2,730 3,640
Meters

Ottawa Tribe of Oklahoma
Environmental Department



Disclaimer: The Ottawa Tribe of Oklahoma makes no warranty for fitness of use for a particular purpose, express or implied, with respect to this map product. Every reasonable effort has been made to assure the accuracy of the maps and data provided nevertheless, some information may not be accurate. Any user of this map product accepts its faults and assumes all responsibility for the use thereof, and further agrees to hold the Ottawa Tribe harmless from and against any damage, loss or liability.



Contact Information

Drawn By: Lori Bailey

Phone: 918-541-1902

Date: October 29, 2010



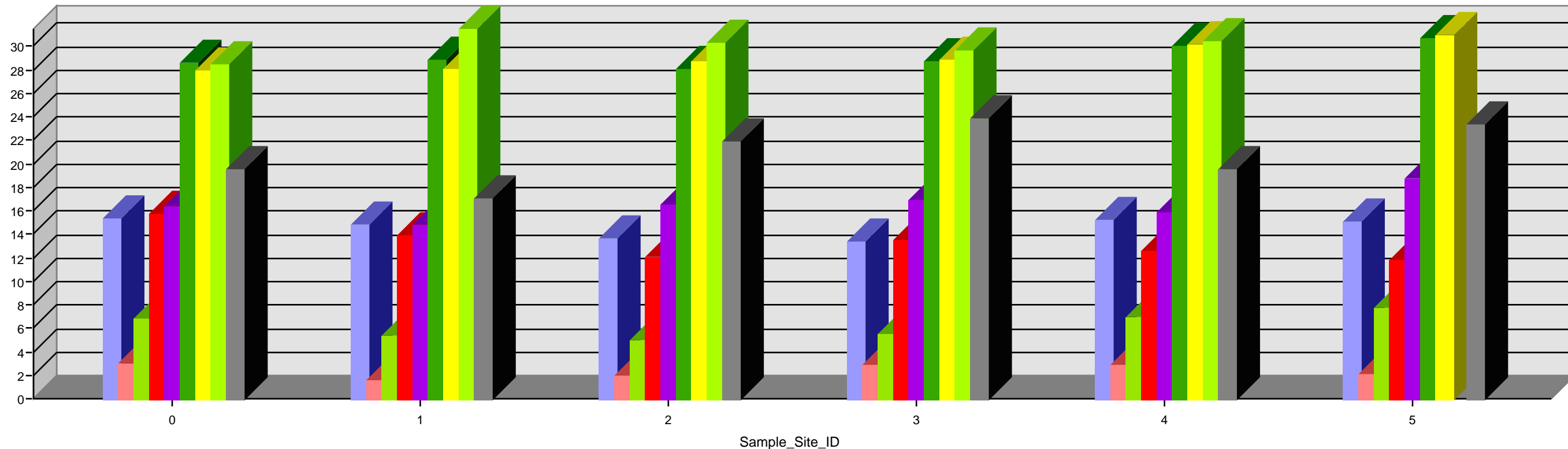
Water Temperature (Degrees Celsius) FY 09-10

10/29/2010

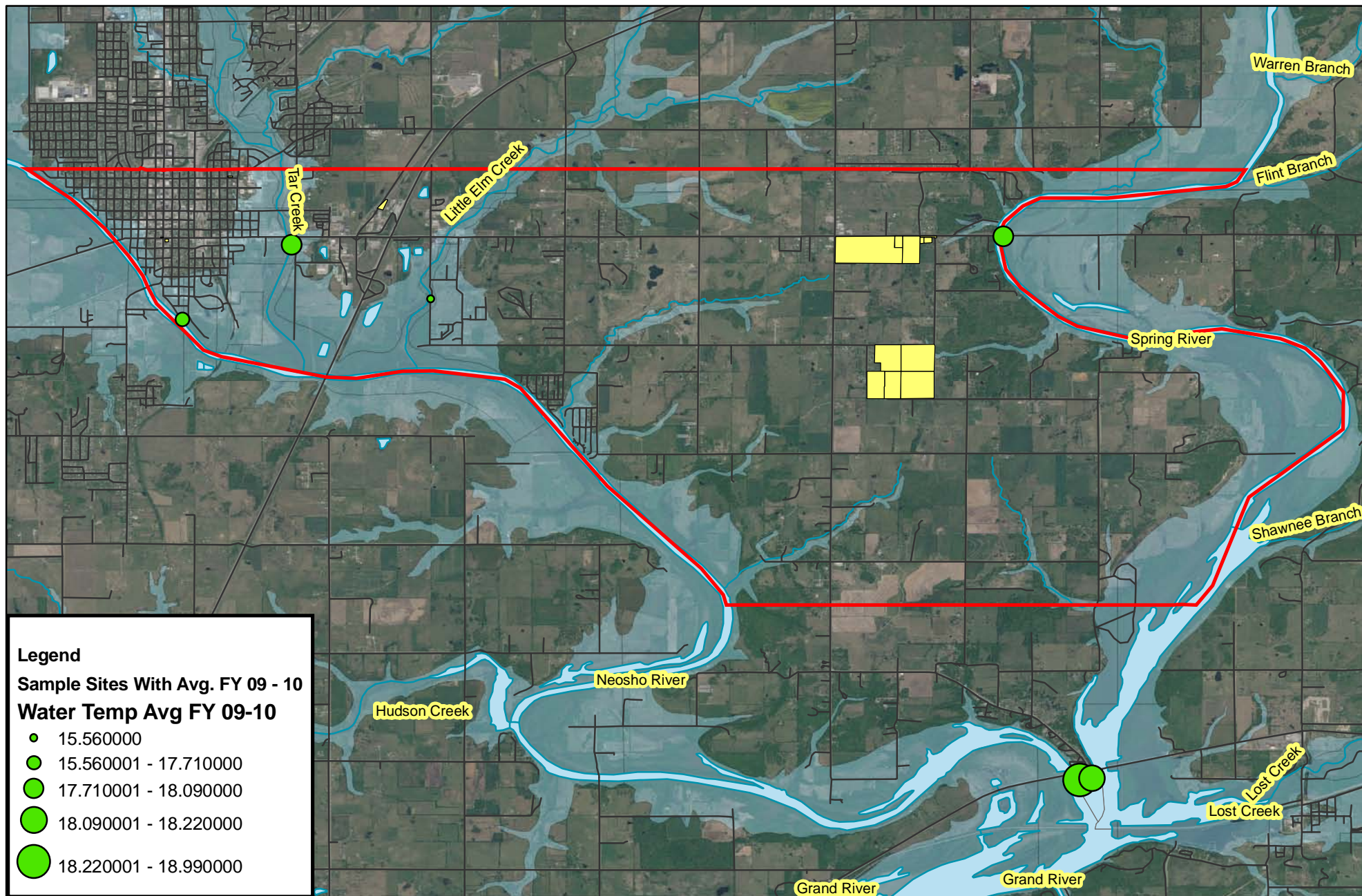
Sample Site ID	November 09	December 09	January 10	March 10	April 10	June 10	July 10	August 10	September 10
Tar Creek	15.33	3.06	6.77	15.68	16.45	28.58	27.93	28.48	19.59
Little Elm Creek	14.81	1.56	5.35	13.97	14.78	28.85	28.08		17.06
Neosho River Site 1	13.63	2.02	5.03	12.04	16.49	28.08	28.74	31.49	21.88
Neosho River Site 2	13.39	2.86	5.55	13.51	16.91	28.76	28.88	30.28	23.83
Spring River Site 1	15.25	2.84	7.00	12.59	15.82	30.00	30.21	29.60	19.53
Spring River Site 2	15.11	2.10	7.68	11.80	18.77	30.69	31.02	30.39	23.33

Samples were not collected in October, 2009 due to flooding and in February & May of 2010 due to weather conditions.

Water Temperature (Degrees Celsius) FY 09-10



Samples were not collected in October, 2009 due to flooding and in February & May of 2010 due to weather conditions.



Water Temperature (Degrees C) FY 2009 - 2010 Average

0 455 910 1,820 2,730 3,640 Meters

Ottawa Tribe of Oklahoma
Environmental Department



Disclaimer: The Ottawa Tribe of Oklahoma makes no warranty for fitness of use for a particular purpose, express or implied, with respect to this map product. Every reasonable effort has been made to assure the accuracy of the maps and data provided nevertheless, some information may not be accurate. Any user of this map product accepts its faults and assumes all responsibility for the use thereof, and further agrees to hold the Ottawa Tribe harmless from and against any damage, loss or liability.



Contact Information

Drawn By: Lori Bailey

Phone: 918-541-1902

Date: October 29, 2010



Dissolved Oxygen FY 09-10

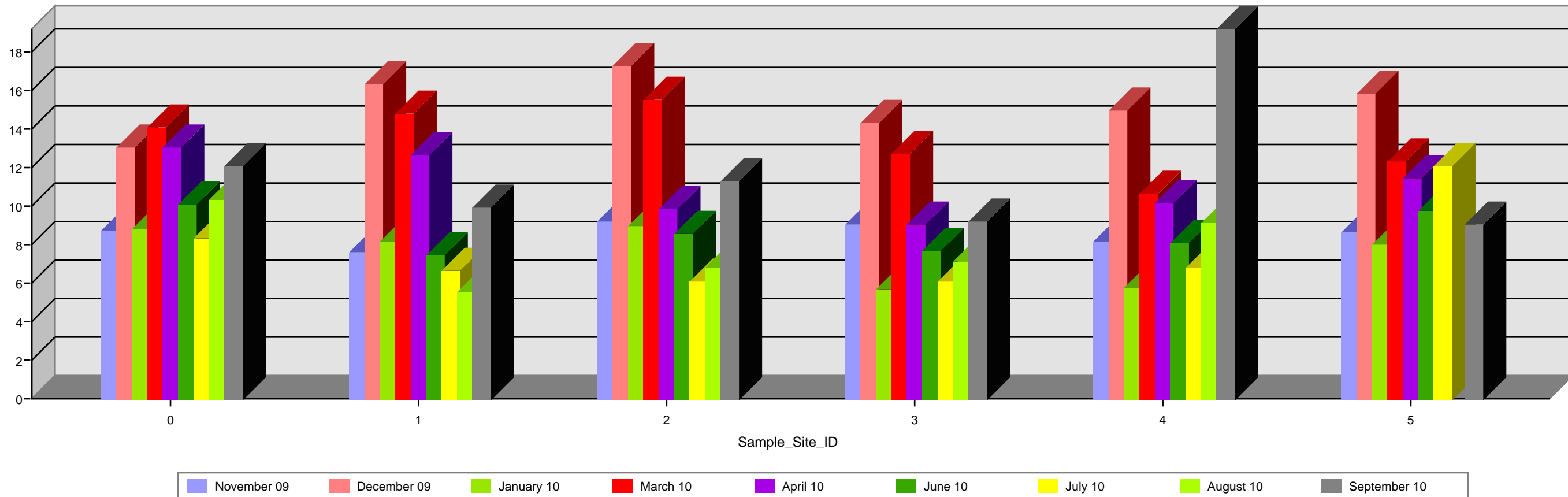
10/29/2010

Sample Site ID	November 09	December 09	January 10	March 10	April 10	June 10	July 10	August 10	September 10
Tar Creek	8.72	13.04	8.78	14.07	13.00	10.09	8.33	10.32	12.08
Little Elm Creek	7.60	16.29	8.13	14.81	12.60	7.40	6.65		9.91
Neosho River Site 1	9.23	17.24	8.97	15.51	9.85	8.54	6.09	5.48	11.25
Neosho River Site 2	9.04	14.29	5.68	12.75	9.05	7.65	6.06	6.83	9.19
Spring River Site 1	8.16	14.99	5.74	10.67	10.12	8.09	6.78	7.12	19.19
Spring River Site 2	8.67	15.84	8.01	12.28	11.43	9.77	12.10	9.09	9.02

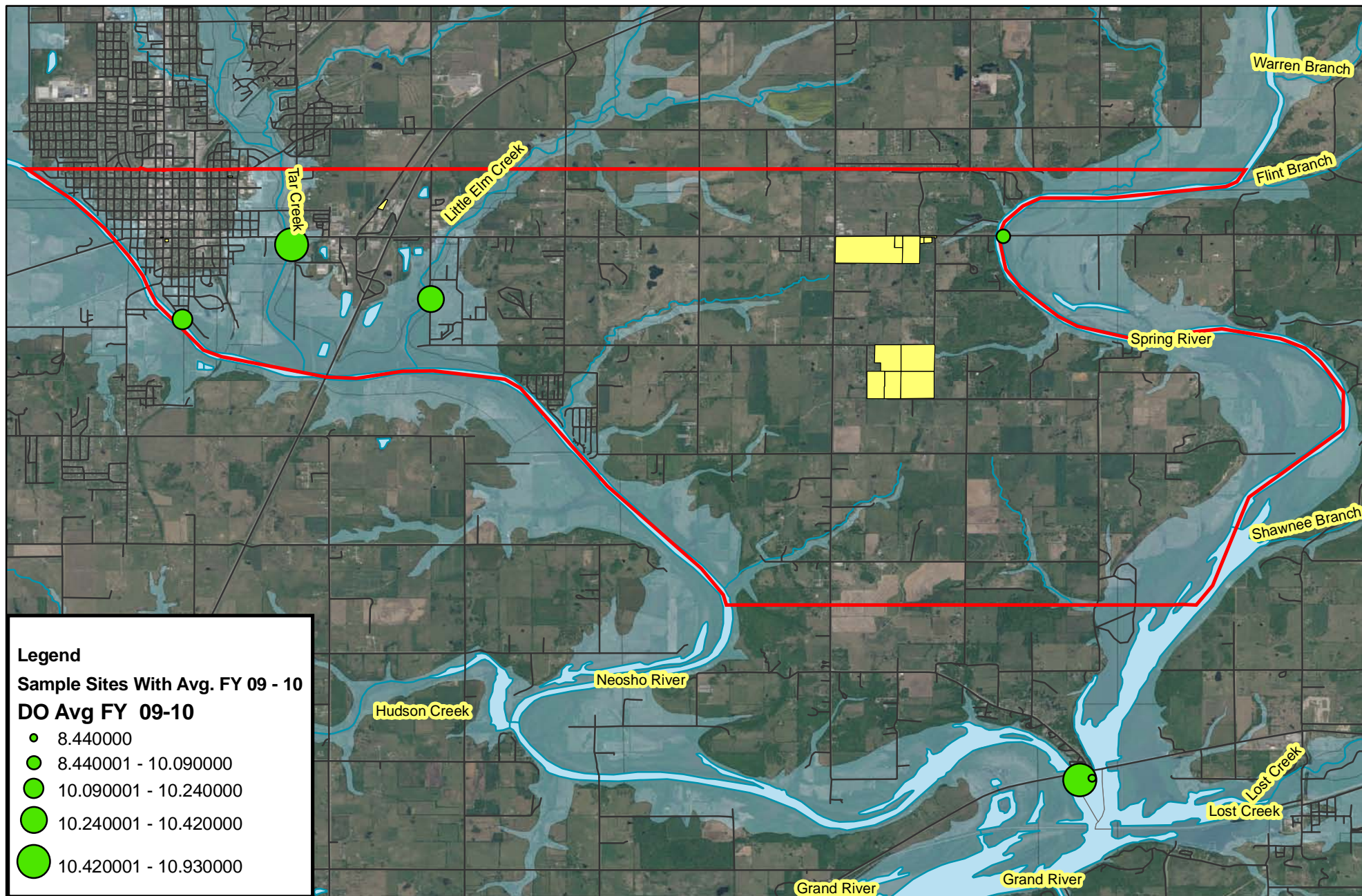
Samples were not collected in October, 2009 due to flooding and in February & May of 2010 due to weather conditions.

Ottawa Tribe of Oklahoma
Environmental Department
10 N 69 A
Miami, OK 74354
918-541-1902

Dissolved Oxygen FY 09-10



Samples were not collected in October, 2009 due to flooding and in February & May of 2010 due to weather conditions.



Dissolved Oxygen FY 2009 - 2010 Average

0 455 910 1,820 2,730 3,640 Meters

**Ottawa Tribe of Oklahoma
Environmental Department**



Disclaimer: The Ottawa Tribe of Oklahoma makes no warranty for fitness of use for a particular purpose, express or implied, with respect to this map product. Every reasonable effort has been made to assure the accuracy of the maps and data provided nevertheless, some information may not be accurate. Any user of this map product accepts its faults and assumes all responsibility for the use thereof, and further agrees to hold the Ottawa Tribe harmless from and against any damage, loss or liability.



Contact Information

Drawn By: Lori Bailey
Phone: 918-541-1902
Date: October 29, 2010



PH Results FY 09-10

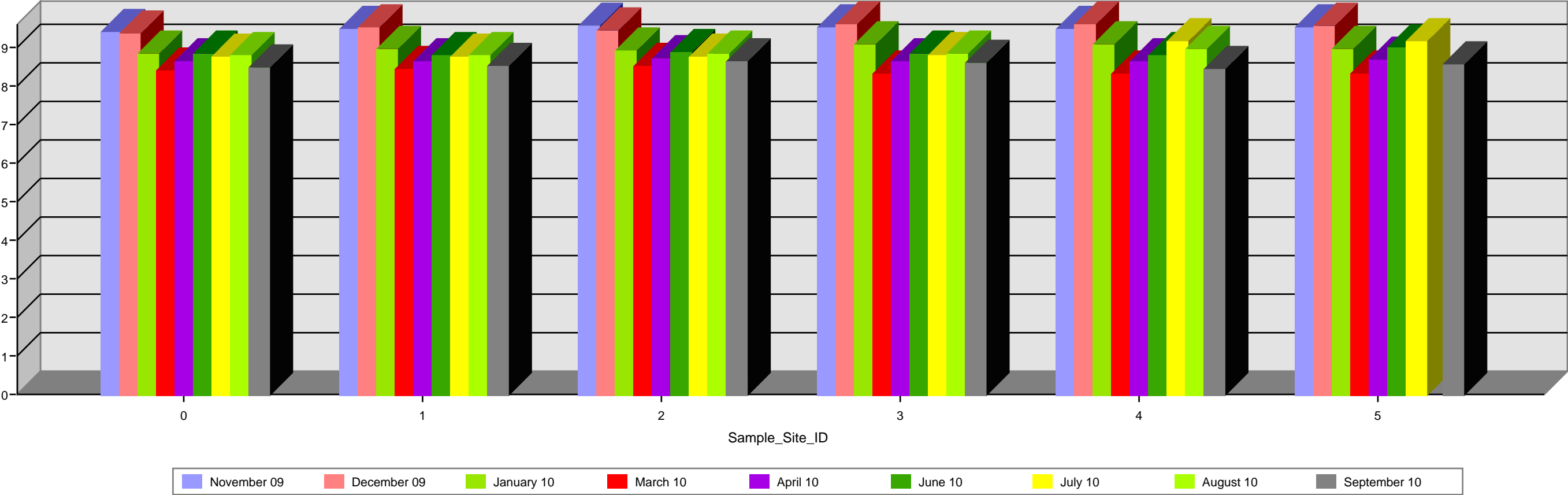
10/29/2010

Sample Site ID	November 09	December 09	January 10	March 10	April 10	June 10	July 10	August 10	September 10
Tar Creek	9.41	9.36	8.84	8.39	8.65	8.86	8.76	8.79	8.50
Little Elm Creek	9.48	9.53	8.98	8.45	8.66	8.81	8.76		8.52
Neosho River Site 1	9.56	9.43	8.92	8.51	8.73	8.88	8.76	8.81	8.66
Neosho River Site 2	9.54	9.61	9.07	8.34	8.66	8.83	8.82	8.84	8.59
Spring River Site 1	9.50	9.61	9.07	8.33	8.63	8.79	9.18	8.84	8.43
Spring River Site 2	9.51	9.56	8.97	8.34	8.70	8.99	9.15	8.97	8.56

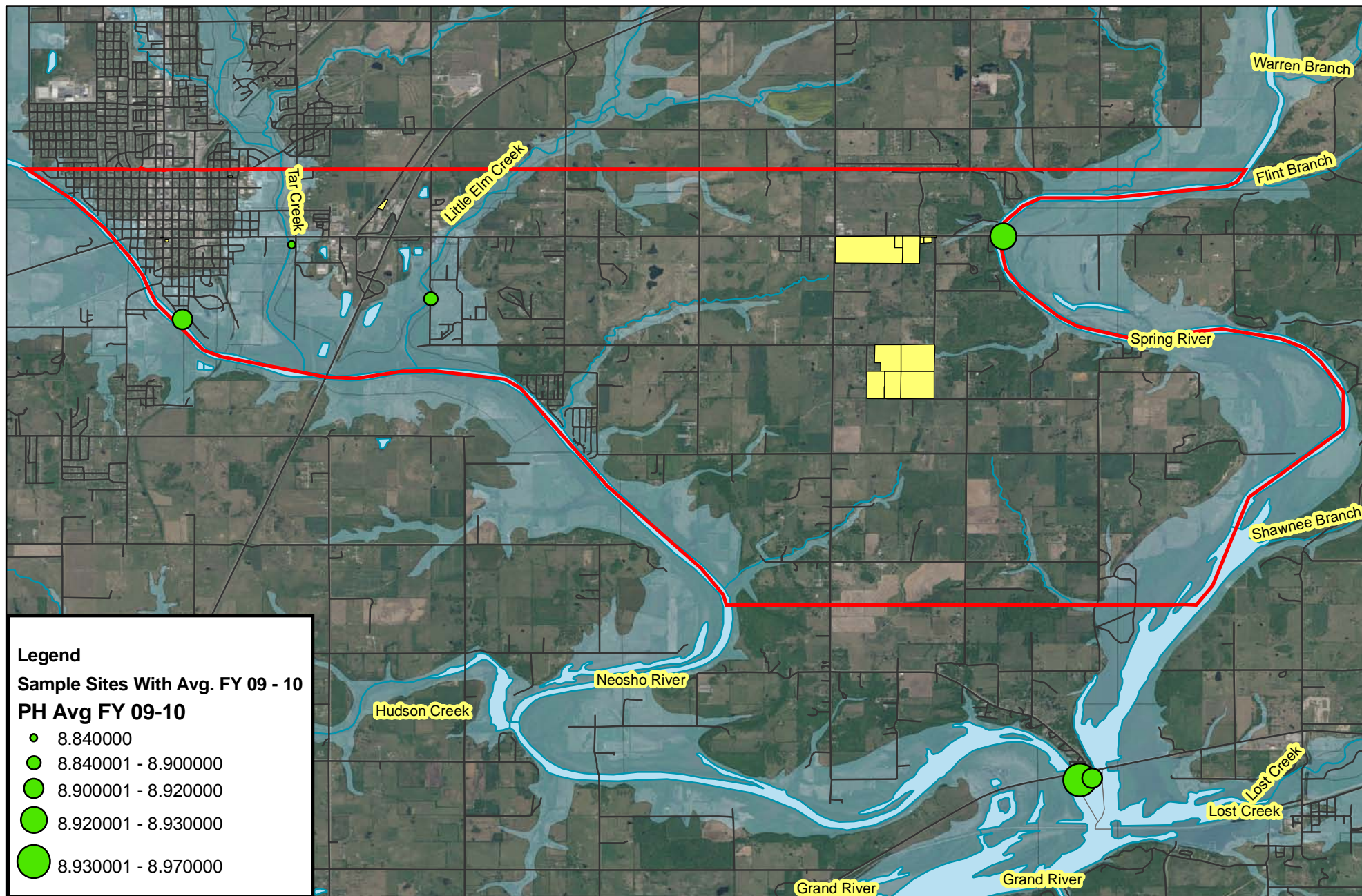
Samples were not collected in October, 2009 due to flooding and in February & May of 2010 due to weather conditions.

Ottawa Tribe of Oklahoma
Environmental Department
10 N 69 A
Miami, OK 74354
918-541-1902

PH Results FY 09-10



Samples were not collected in October, 2009 due to flooding and in February & May of 2010 due to weather conditions.



PH Results FY 2009 - 2010 Average

0 455 910 1,820 2,730 3,640
Meters

Ottawa Tribe of Oklahoma
Environmental Department



Disclaimer: The Ottawa Tribe of Oklahoma makes no warranty for fitness of use for a particular purpose, express or implied, with respect to this map product. Every reasonable effort has been made to assure the accuracy of the maps and data provided nevertheless, some information may not be accurate. Any user of this map product accepts its faults and assumes all responsibility for the use thereof, and further agrees to hold the Ottawa Tribe harmless from and against any damage, loss or liability.



Contact Information

Drawn By: Lori Bailey

Phone: 918-541-1902

Date: October 29, 2010



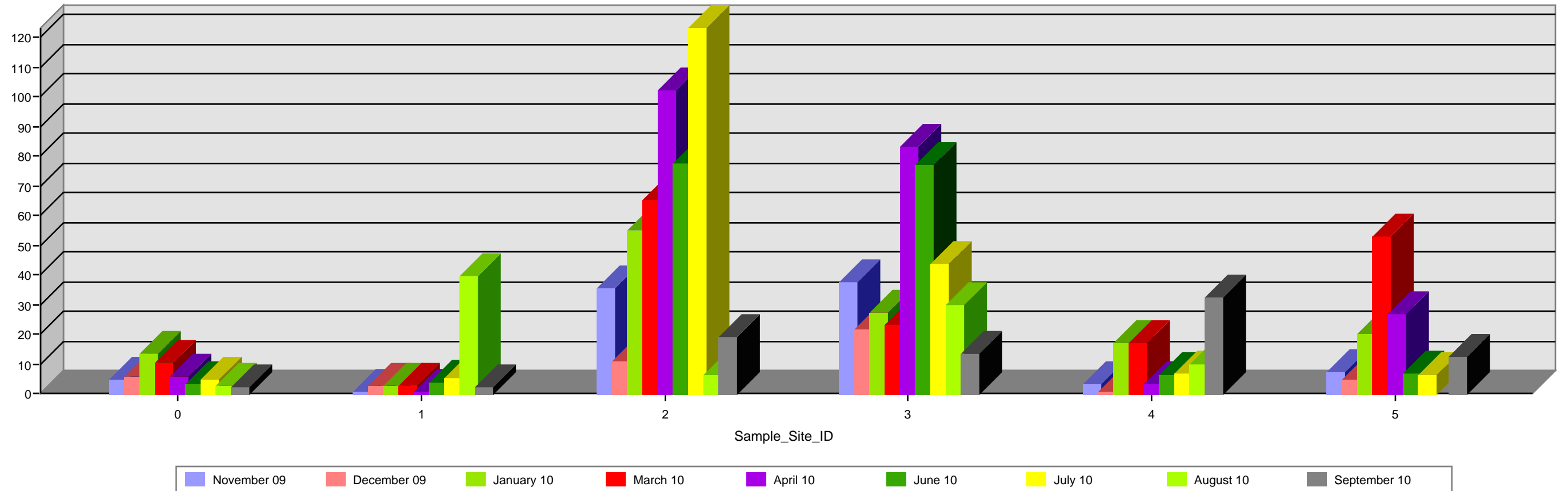
Turbidity (NTU) FY 09-10

10/29/2010

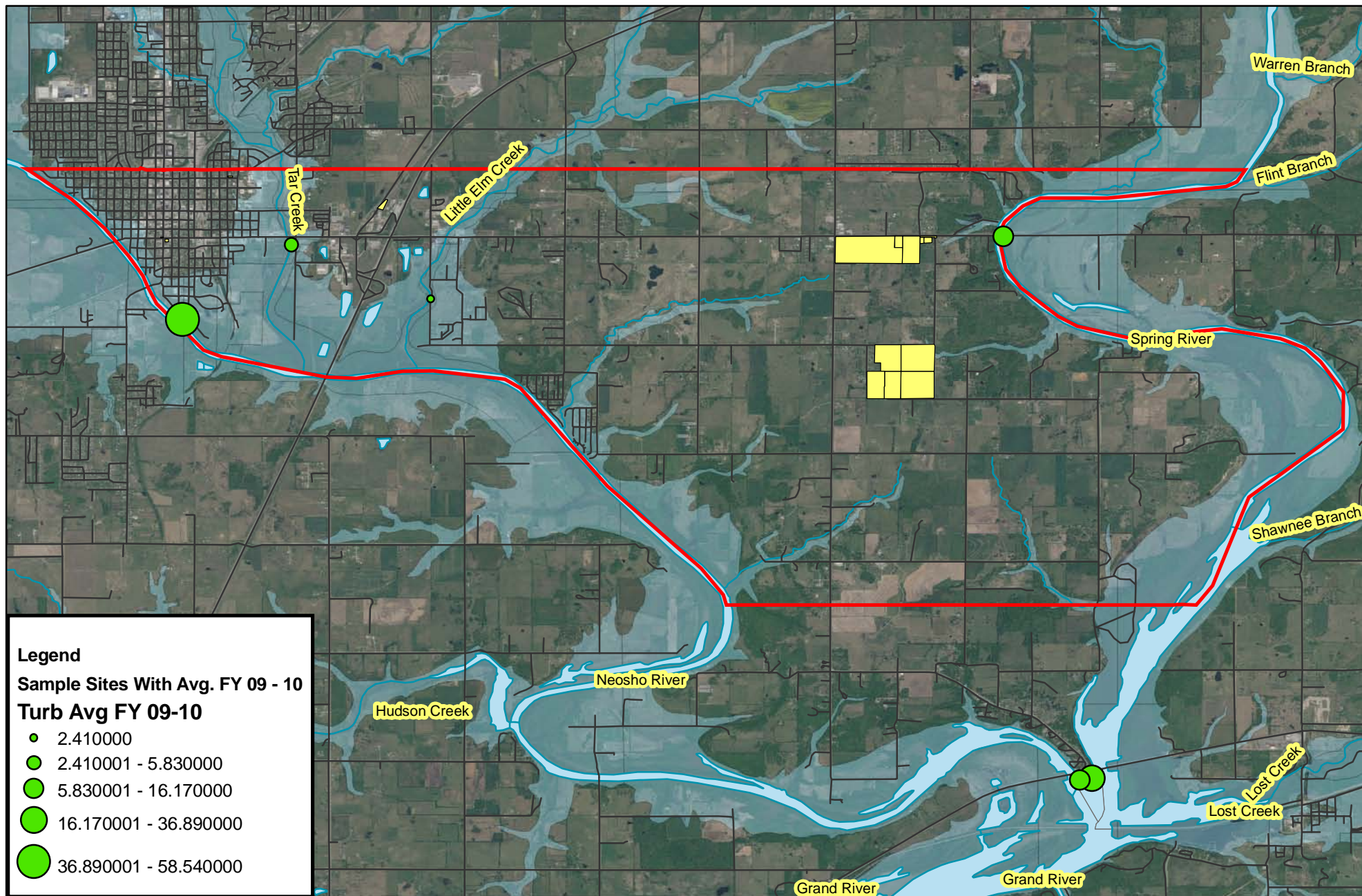
Sample Site ID	November 09	December 09	January 10	March 10	April 10	June 10	July 10	August 10	September 10
Tar Creek	4.70	5.70	13.50	10.30	5.60	3.30	4.40	2.80	2.20
Little Elm Creek	0.60	2.70	2.50	2.60	0.60	3.50	4.90		1.90
Neosho River Site 1	35.50	10.70	54.90	65.10	102.10	77.30	123.10	39.40	18.80
Neosho River Site 2	37.20	21.40	27.10	23.00	83.30	76.70	43.70	6.20	13.40
Spring River Site 1	3.20	0.70	16.90	16.70	3.20	6.30	6.50	29.50	32.10
Spring River Site 2	7.00	4.60	19.90	52.70	26.70	6.50	6.10	9.60	12.40

Samples were not collected in October, 2009 due to flooding and in February & May of 2010 due to weather conditions.

Turbidity (NTU) FY 09-10



Samples were not collected in October, 2009 due to flooding and in February & May of 2010 due to weather conditions.



Turbidity (NTU) FY 2009 - 2010 Average

0 455 910 1,820 2,730 3,640
Meters

Ottawa Tribe of Oklahoma
Environmental Department



Disclaimer: The Ottawa Tribe of Oklahoma makes no warranty for fitness of use for a particular purpose, express or implied, with respect to this map product. Every reasonable effort has been made to assure the accuracy of the maps and data provided nevertheless, some information may not be accurate. Any user of this map product accepts its faults and assumes all responsibility for the use thereof, and further agrees to hold the Ottawa Tribe harmless from and against any damage, loss or liability.



Contact Information

Drawn By: Lori Bailey

Phone: 918-541-1902

Date: October 29, 2010



Salinity Results FY 09-10

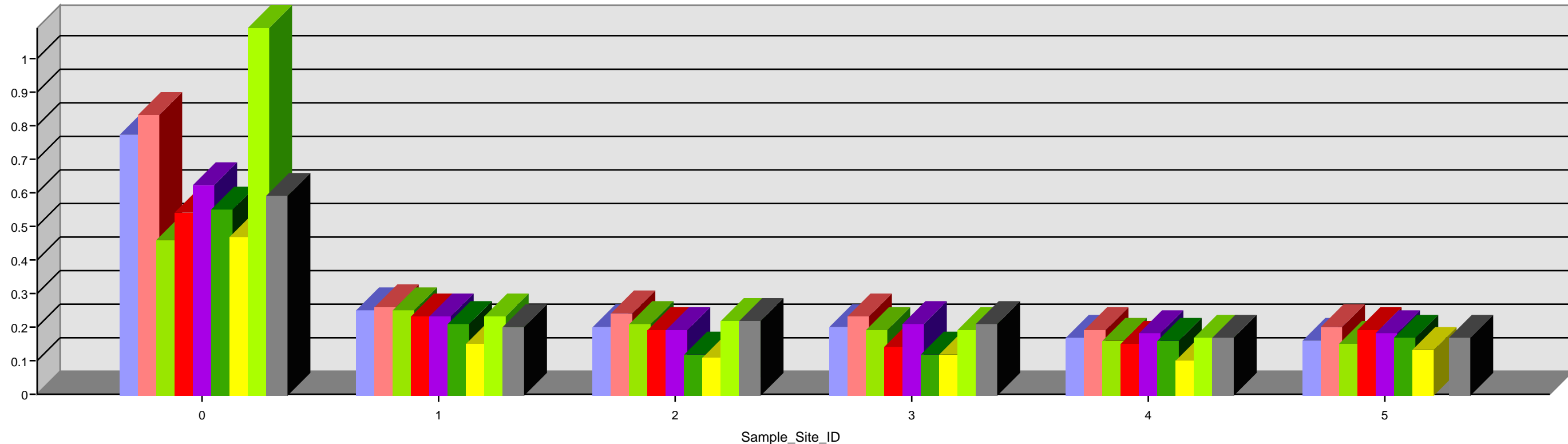
10/29/2010

Sample Site ID	November 09	December 09	January 10	March 10	April 10	June 10	July 10	August 10	September 10
Tar Creek	0.77	0.83	0.46	0.54	0.62	0.55	0.47	1.09	0.59
Little Elm Creek	0.25	0.26	0.25	0.23	0.23	0.21	0.15		0.20
Neosho River Site 1	0.20	0.24	0.21	0.19	0.19	0.12	0.11	0.23	0.22
Neosho River Site 2	0.20	0.23	0.19	0.14	0.21	0.12	0.12	0.22	0.21
Spring River Site 1	0.17	0.19	0.16	0.15	0.18	0.16	0.10	0.19	0.17
Spring River Site 2	0.16	0.20	0.15	0.19	0.18	0.17	0.13	0.17	0.17

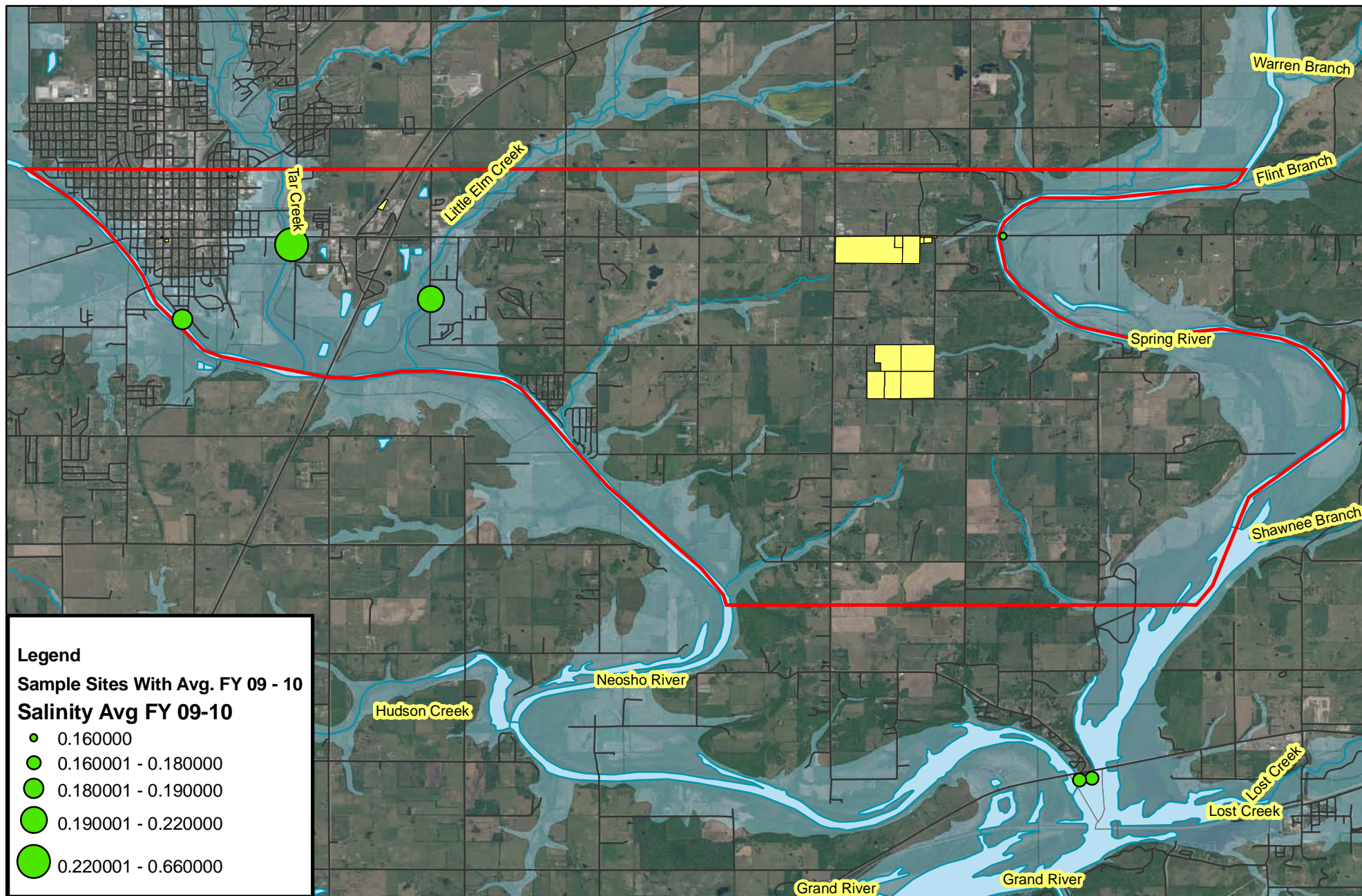
Samples were not collected in October, 2009 due to flooding and in February & May of 2010 due to weather conditions.

Ottawa Tribe of Oklahoma
Environmental Department
10 N 69 A
Miami, OK 74354
918-541-1902

Salinity Results FY 09-10



Samples were not collected in October, 2009 due to flooding and in February & May of 2010 due to weather conditions.



Salinity Results FY 2009 - 2010 Average

0 455 910 1,820 2,730 3,640 Meters

Ottawa Tribe of Oklahoma
 Environmental Department



Disclaimer: The Ottawa Tribe of Oklahoma makes no warranty for fitness of use for a particular purpose, express or implied, with respect to this map product. Every reasonable effort has been made to assure the accuracy of the maps and data provided nevertheless, some information may not be accurate. Any user of this map product accepts its faults and assumes all responsibility for the use thereof, and further agrees to hold the Ottawa Tribe harmless from and against any damage, loss or liability.



Contact Information

Drawn By: Lori Bailey

Phone: 918-541-1902

Date: October 29, 2010



ORP Results FY 09-10

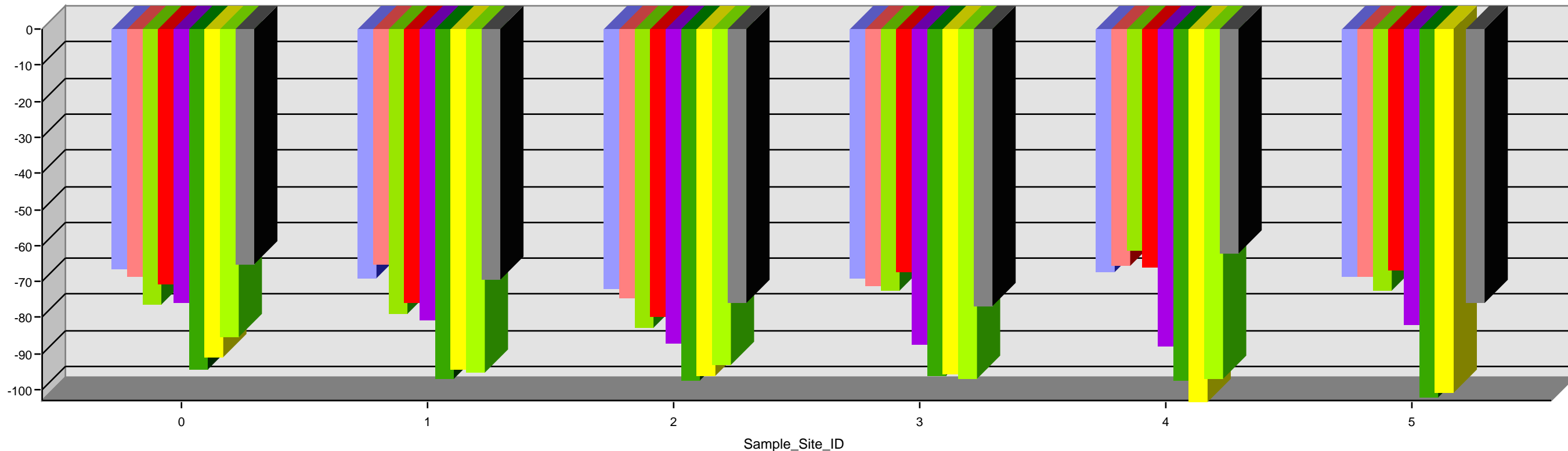
10/29/2010

Sample Site ID	November 09	December 09	January 10	March 10	April 10	June 10	July 10	August 10	September 10
Tar Creek	-66.10	-68.10	-76.10	-70.50	-75.60	-93.80	-90.60	-85.10	-64.90
Little Elm Creek	-68.80	-64.90	-78.40	-75.40	-80.40	-96.50	-93.90		-68.90
Neosho River Site 1	-71.60	-74.20	-82.20	-79.60	-86.80	-97.00	-95.70	-94.80	-75.40
Neosho River Site 2	-68.80	-70.70	-71.90	-66.80	-87.10	-95.60	-95.10	-92.80	-76.40
Spring River Site 1	-67.00	-65.40	-61.10	-65.60	-87.70	-96.90	-103.00	-96.70	-61.60
Spring River Site 2	-68.40	-68.20	-72.10	-66.50	-81.60	-101.60	-100.40	-96.60	-75.40

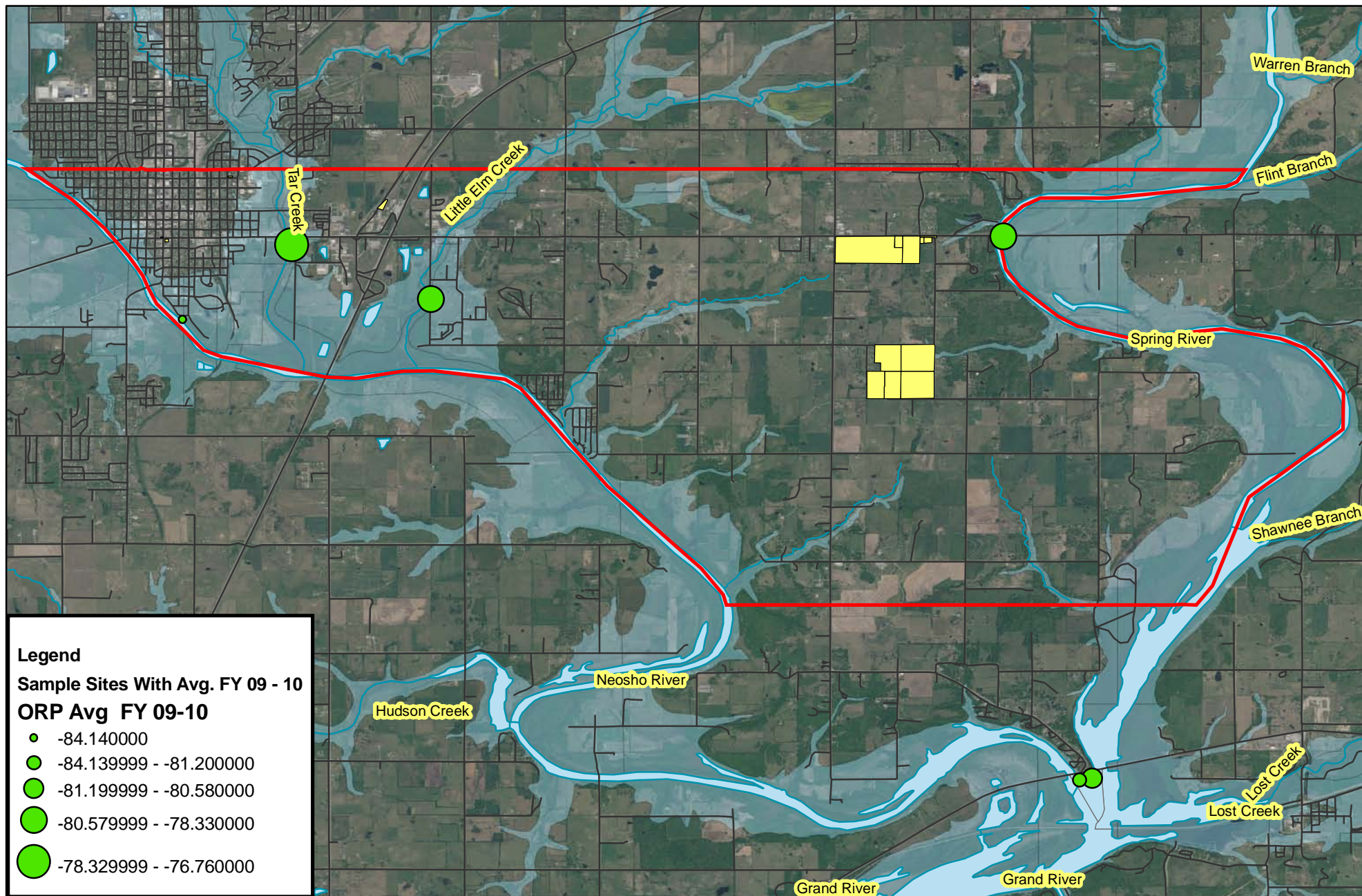
Samples were not collected in October, 2009 due to flooding and in February & May of 2010 due to weather conditions.

Ottawa Tribe of Oklahoma
Environmental Department
10 N 69 A
Miami, OK 74354
918-541-1902

ORP Results FY 09-10



Samples were not collected in October, 2009 due to flooding and in February & May of 2010 due to weather conditions.



ORP Results FY 2009 - 2010 Average

0 455 910 1,820 2,730 3,640
Meters

Ottawa Tribe of Oklahoma
Environmental Department



Disclaimer: The Ottawa Tribe of Oklahoma makes no warranty for fitness of use for a particular purpose, express or implied, with respect to this map product. Every reasonable effort has been made to assure the accuracy of the maps and data provided nevertheless, some information may not be accurate. Any user of this map product accepts its faults and assumes all responsibility for the use thereof, and further agrees to hold the Ottawa Tribe harmless from and against any damage, loss or liability.



Contact Information

Drawn By: Lori Bailey

Phone: 918-541-1902

Date: October 29, 2010



Flow Severity Results FY 09-10

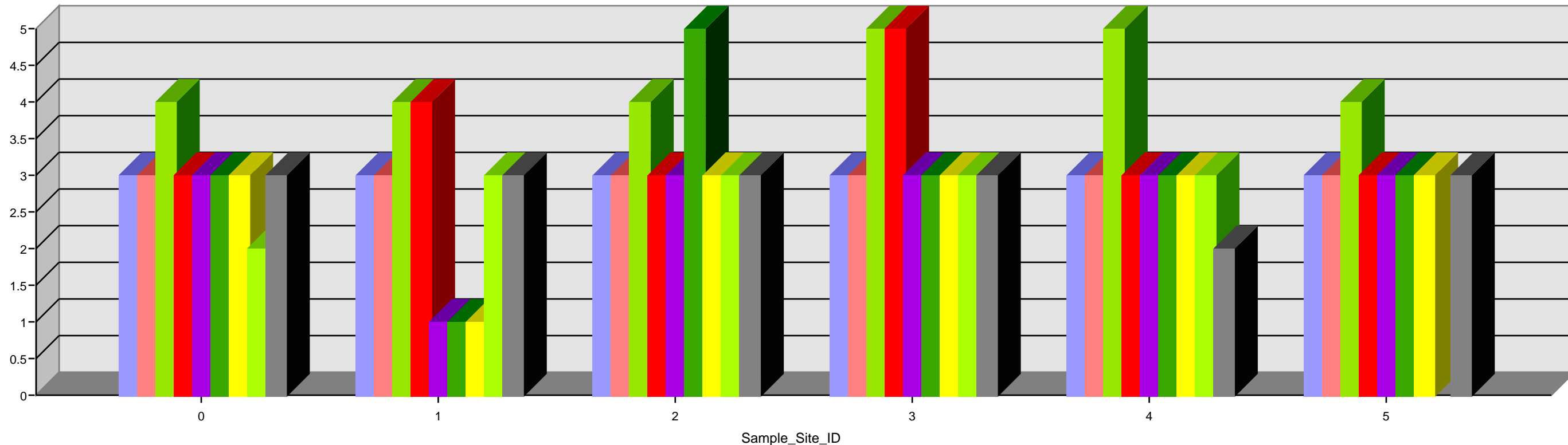
10/29/2010

Sample Site ID	November 09	December 09	January 10	March 10	April 10	June 10	July 10	August 10	September 10
Tar Creek	3.00	3.00	4.00	3.00	3.00	3.00	3.00	2.00	3.00
Little Elm Creek	3.00	3.00	4.00	4.00	1.00	1.00	1.00		3.00
Neosho River Site 1	3.00	3.00	4.00	3.00	3.00	5.00	3.00	3.00	3.00
Neosho River Site 2	3.00	3.00	5.00	5.00	3.00	3.00	3.00	3.00	3.00
Spring River Site 1	3.00	3.00	5.00	3.00	3.00	3.00	3.00	3.00	2.00
Spring River Site 2	3.00	3.00	4.00	3.00	3.00	3.00	3.00	3.00	3.00

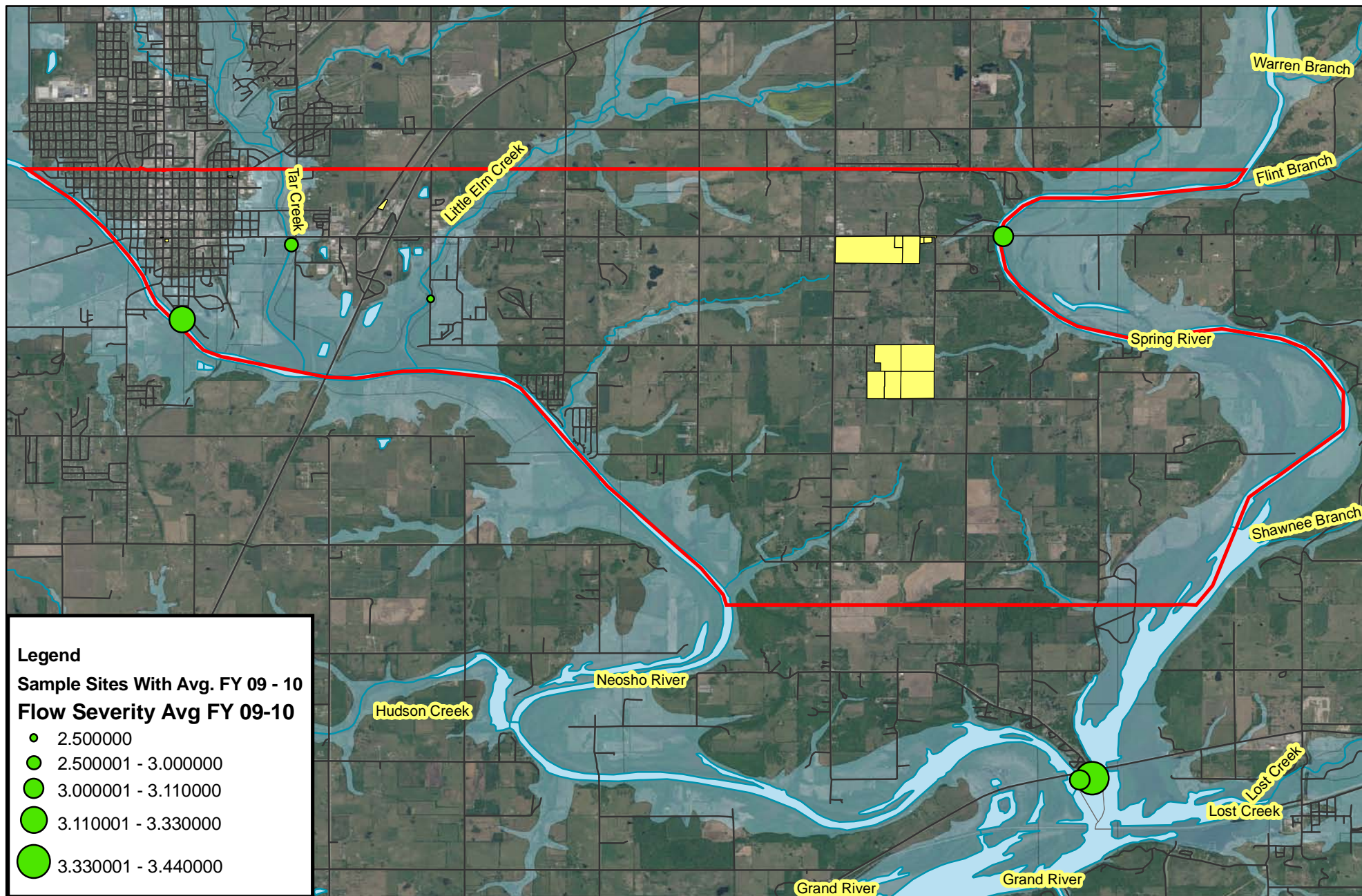
Samples were not collected in October, 2009 due to flooding and in February & May of 2010 due to weather conditions.

Ottawa Tribe of Oklahoma
Environmental Department
10 N 69 A
Miami, OK 74354
918-541-1902

Flow Severity Results FY 09-10



Samples were not collected in October, 2009 due to flooding and in February & May of 2010 due to weather conditions.



Flow Severity Results FY 2009 - 2010 Average

0 455 910 1,820 2,730 3,640 Meters

Ottawa Tribe of Oklahoma
Environmental Department



Disclaimer: The Ottawa Tribe of Oklahoma makes no warranty for fitness of use for a particular purpose, express or implied, with respect to this map product. Every reasonable effort has been made to assure the accuracy of the maps and data provided nevertheless, some information may not be accurate. Any user of this map product accepts its faults and assumes all responsibility for the use thereof, and further agrees to hold the Ottawa Tribe harmless from and against any damage, loss or liability.



Contact Information

Drawn By: Lori Bailey

Phone: 918-541-1902

Date: October 29, 2010



Total Hardness Results FY 09-10

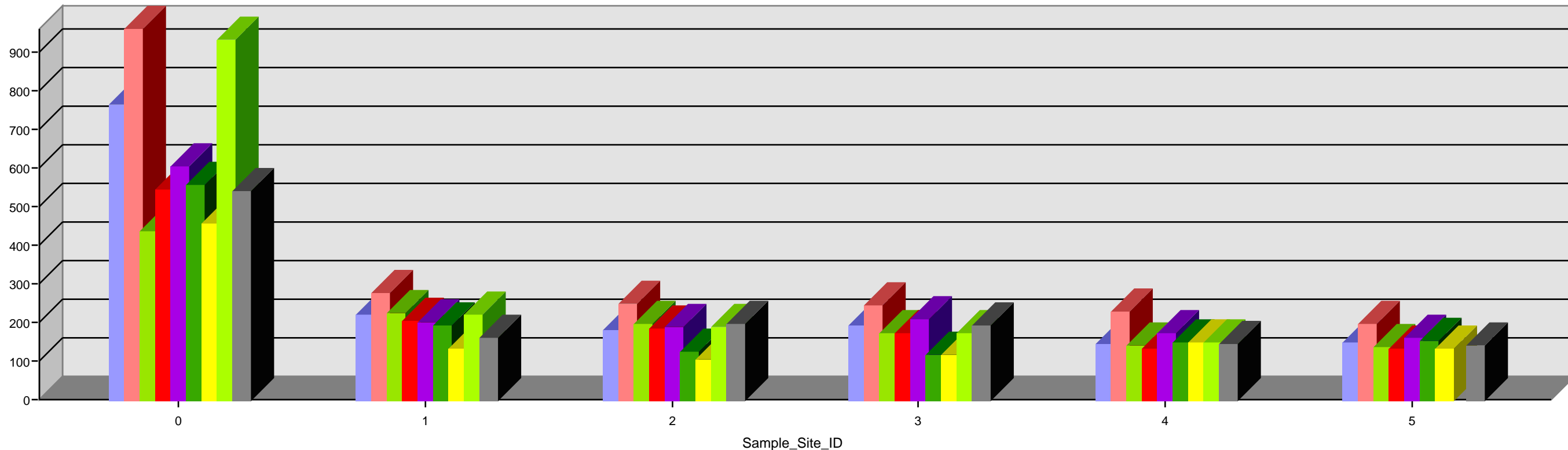
10/29/2010

Sample Site ID	November 09	December 09	January 10	March 10	April 10	June 10	July 10	August 10	September 10
Tar Creek	762.00	960.00	437.00	543.00	605.00	558.00	456.00	930.00	540.00
Little Elm Creek	219.00	275.00	225.00	204.00	200.00	191.00	130.00		161.00
Neosho River Site 1	179.00	247.00	198.00	185.00	186.00	122.00	104.00	218.00	194.00
Neosho River Site 2	192.00	242.00	170.00	172.00	208.00	116.00	114.00	189.00	191.00
Spring River Site 1	143.00	227.00	138.00	130.00	172.00	150.00	150.00	173.00	145.00
Spring River Site 2	147.00	197.00	137.00	130.00	160.00	152.00	132.00	146.00	140.00

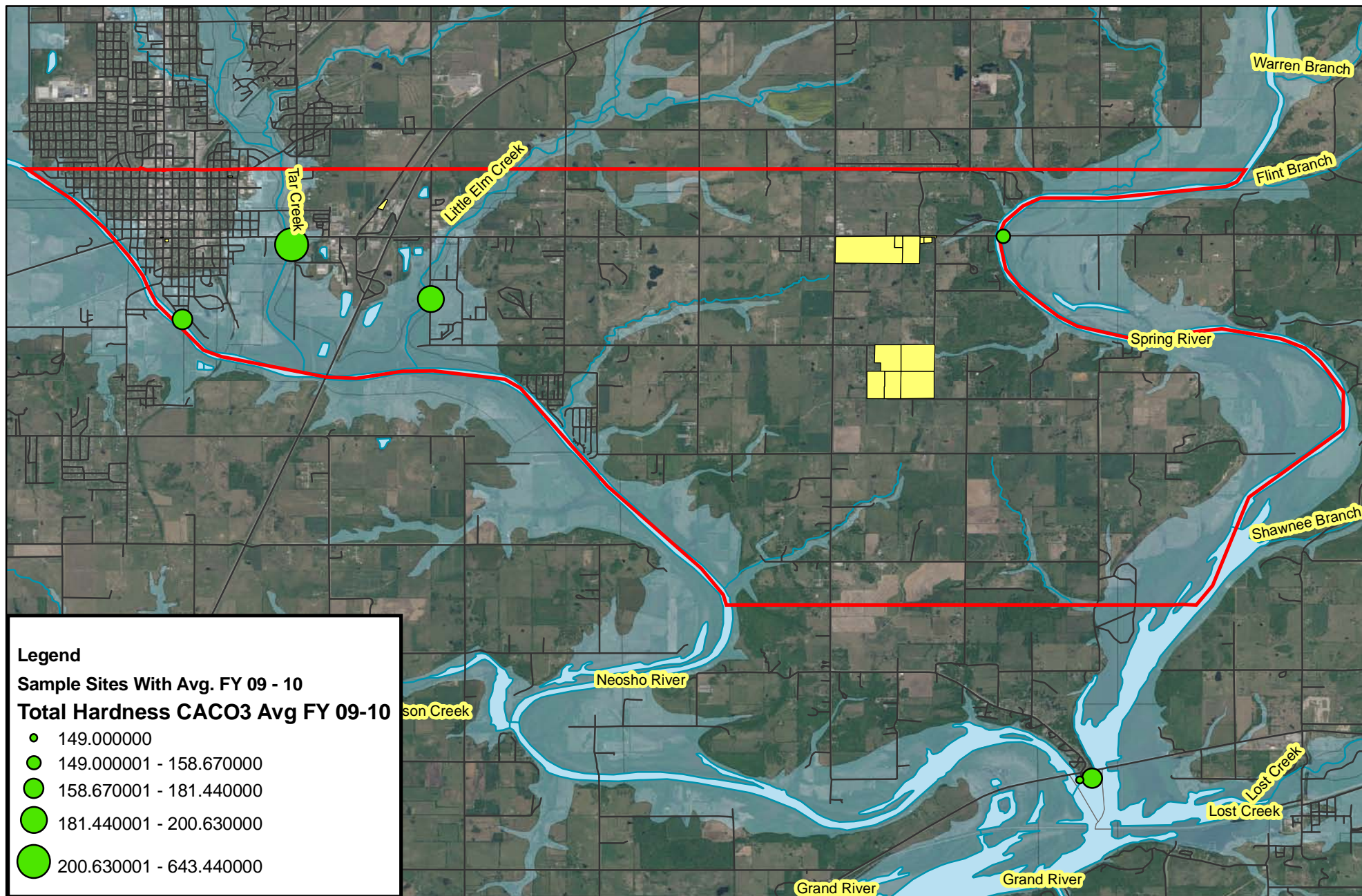
Samples were not collected in October, 2009 due to flooding and in February & May of 2010 due to weather conditions.

Ottawa Tribe of Oklahoma
Environmental Department
10 N 69 A
Miami, OK 74354
918-541-1902

Total Hardness Results FY 09-10



Samples were not collected in October, 2009 due to flooding and in February & May of 2010 due to weather conditions.



Total Hardness Results FY 2009 - 2010 Average

0 455 910 1,820 2,730 3,640
Meters

Ottawa Tribe of Oklahoma
Environmental Department



Disclaimer: The Ottawa Tribe of Oklahoma makes no warranty for fitness of use for a particular purpose, express or implied, with respect to this map product. Every reasonable effort has been made to assure the accuracy of the maps and data provided nevertheless, some information may not be accurate. Any user of this map product accepts its faults and assumes all responsibility for the use thereof, and further agrees to hold the Ottawa Tribe harmless from and against any damage, loss or liability.



Contact Information

Drawn By: Lori Bailey

Phone: 918-541-1902

Date: October 29, 2010



Ortho Phosphate Results FY 09-10

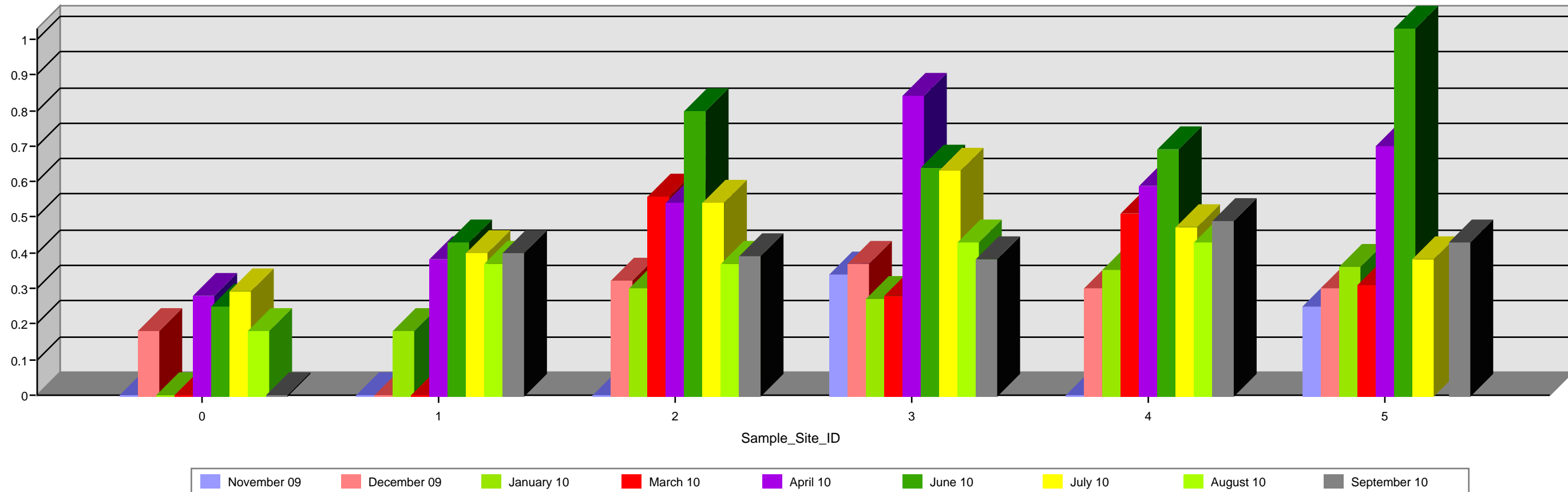
10/29/2010

Sample Site ID	November 09	December 09	January 10	March 10	April 10	June 10	July 10	August 10	September 10
Tar Creek	0.00	0.18	0.00	0.00	0.28	0.25	0.29	0.18	0.00
Little Elm Creek	0.00	0.00	0.18	0.00	0.38	0.43	0.40		0.40
Neosho River Site 1	0.00	0.32	0.30	0.56	0.54	0.80	0.54	0.37	0.39
Neosho River Site 2	0.34	0.37	0.27	0.28	0.84	0.64	0.63	0.37	0.38
Spring River Site 1	0.00	0.30	0.35	0.51	0.59	0.69	0.47	0.43	0.49
Spring River Site 2	0.25	0.30	0.36	0.31	0.70	1.03	0.38	0.43	0.43

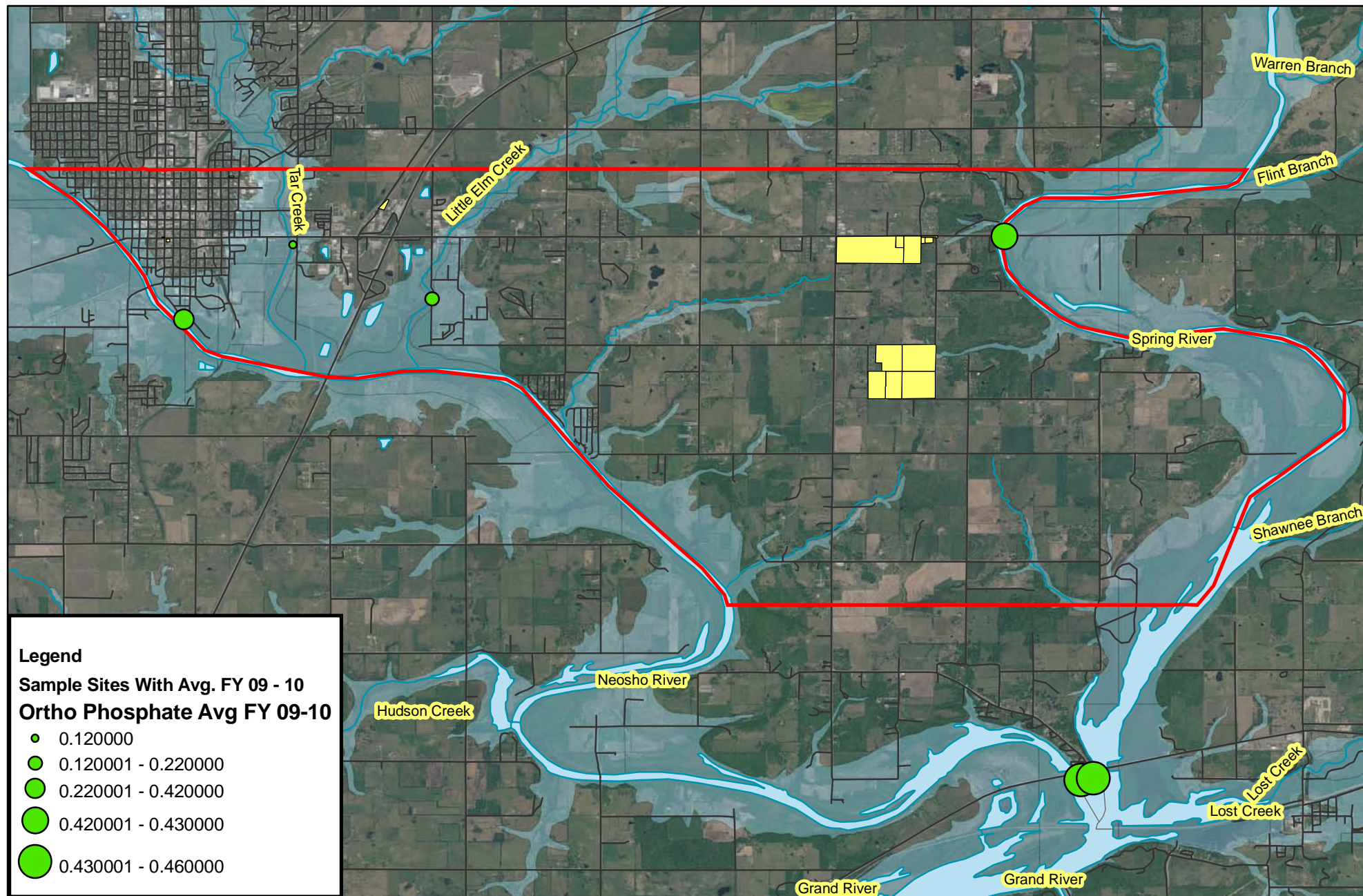
Samples were not collected in October, 2009 due to flooding and in February & May of 2010 due to weather conditions.

Ottawa Tribe of Oklahoma
Environmental Department
10 N 69 A
Miami, OK 74354
918-541-1902

Ortho Phosphate Results FY 09-10



Samples were not collected in October, 2009 due to flooding and in February & May of 2010 due to weather conditions.



Ortho Phosphate Results FY 2009 - 2010 Average

0 455 910 1,820 2,730 3,640
Meters

Ottawa Tribe of Oklahoma
Environmental Department



Disclaimer: The Ottawa Tribe of Oklahoma makes no warranty for fitness of use for a particular purpose, express or implied, with respect to this map product. Every reasonable effort has been made to assure the accuracy of the maps and data provided nevertheless, some information may not be accurate. Any user of this map product accepts its faults and assumes all responsibility for the use thereof, and further agrees to hold the Ottawa Tribe harmless from and against any damage, loss or liability.



Contact Information

Drawn By: Lori Bailey

Phone: 918-541-1902

Date: October 29, 2010



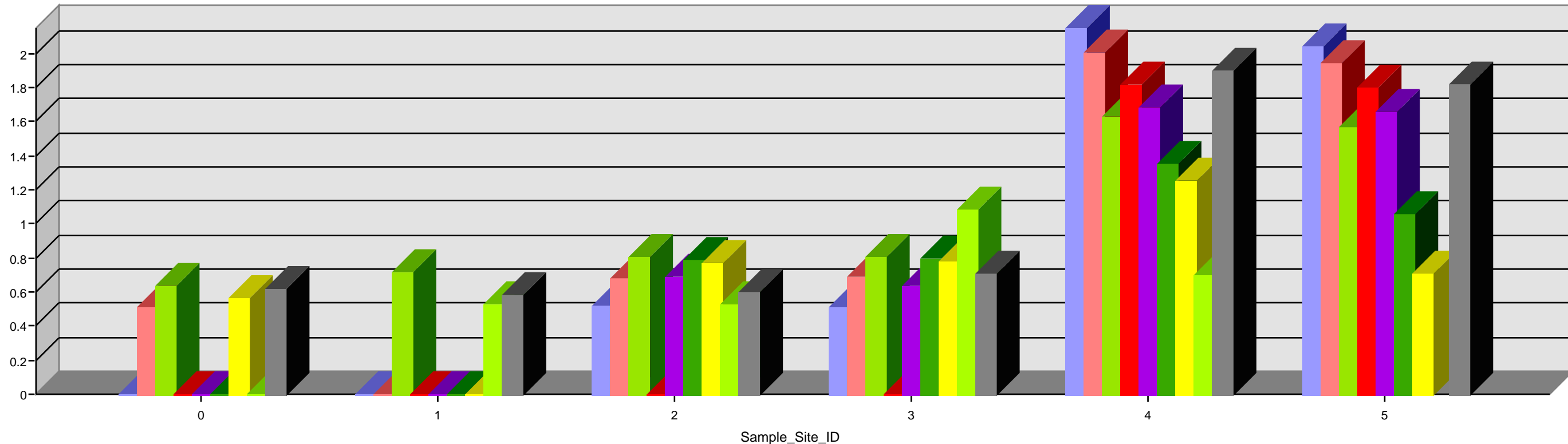
Nitrate Results (mg/l) FY 09-10

10/29/2010

Sample Site ID	November 09	December 09	January 10	March 10	April 10	June 10	July 10	August 10	September 10
Tar Creek	0.00	0.51	0.64	0.00	0.00	0.00	0.56	0.00	0.62
Little Elm Creek	0.00	0.00	0.72	0.00	0.00	0.00	0.00		0.58
Neosho River Site 1	0.52	0.68	0.81	0.00	0.69	0.79	0.77	0.53	0.60
Neosho River Site 2	0.51	0.69	0.81	0.00	0.64	0.80	0.78	0.53	0.71
Spring River Site 1	2.15	2.01	1.63	1.82	1.68	1.35	1.25	1.08	1.90
Spring River Site 2	2.04	1.94	1.57	1.80	1.66	1.06	0.71	0.70	1.82

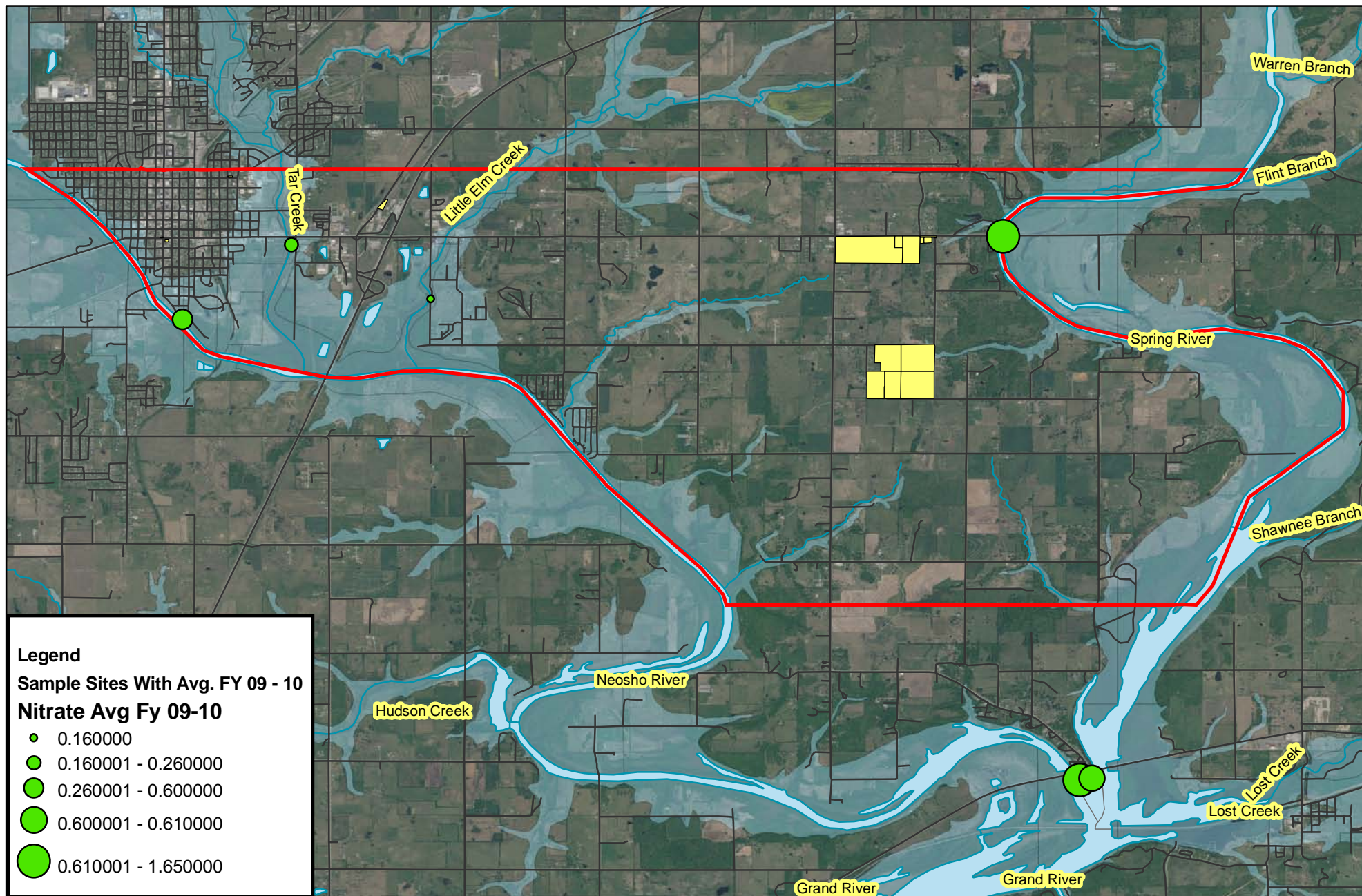
Samples were not collected in October, 2009 due to flooding and in February & May of 2010 due to weather conditions.

Nitrate Results FY 09-10



November 09 December 09 January 10 March 10 April 10 June 10 July 10 August 10 September 10

Samples were not collected in October, 2009 due to flooding and in February & May of 2010 due to weather conditions.



Nitrate Results (mg/l) FY 2009 - 2010 Average

0 455 910 1,820 2,730 3,640 Meters

Ottawa Tribe of Oklahoma
Environmental Department



Disclaimer: The Ottawa Tribe of Oklahoma makes no warranty for fitness of use for a particular purpose, express or implied, with respect to this map product. Every reasonable effort has been made to assure the accuracy of the maps and data provided nevertheless, some information may not be accurate. Any user of this map product accepts its faults and assumes all responsibility for the use thereof, and further agrees to hold the Ottawa Tribe harmless from and against any damage, loss or liability.



Contact Information

Drawn By: Lori Bailey

Phone: 918-541-1902

Date: October 29, 2010



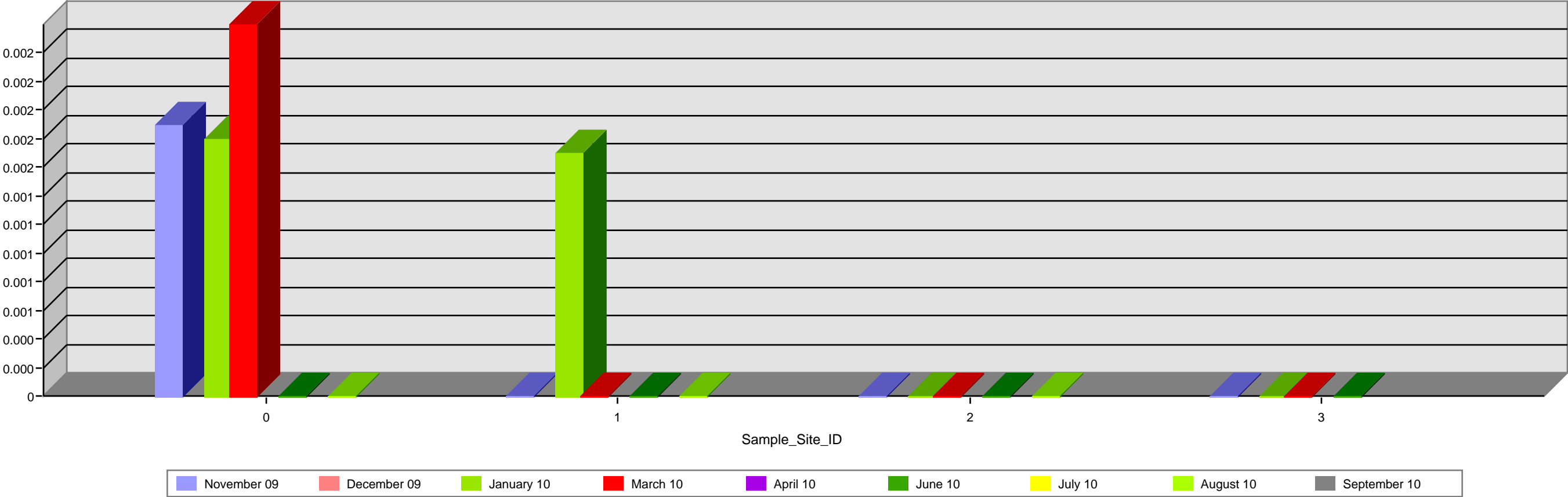
Cadmium Results (mg-l) FY 09-10

10/29/2010

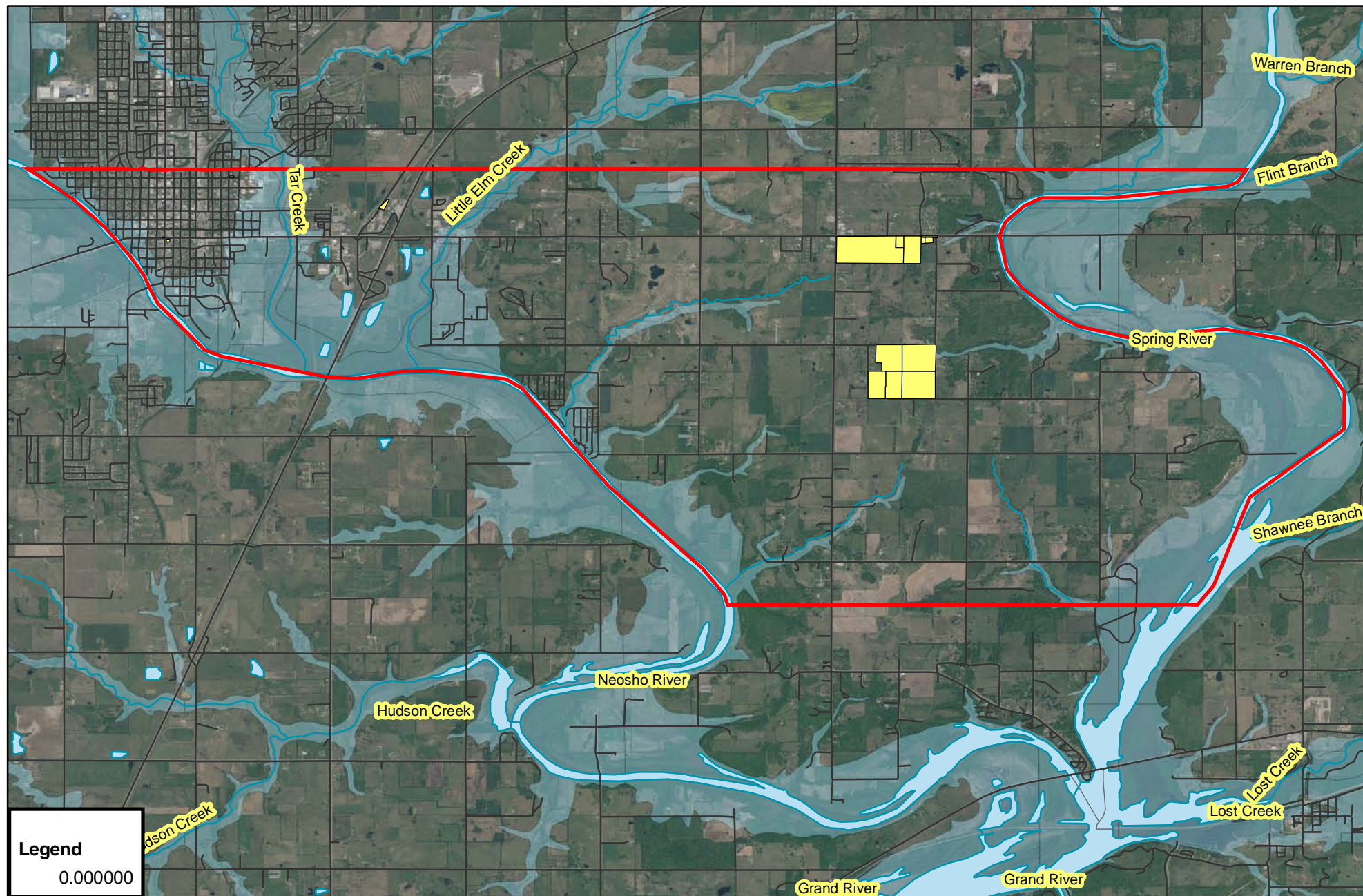
Sample Site ID	November 09	December 09	January 10	March 10	April 10	June 10	July 10	August 10	September 10
Tar Creek	0.00		0.00	0.00		0.00		0.00	
Little Elm Creek	0.00		0.00	0.00		0.00			
Neosho River Site 1	0.00		0.00	0.00		0.00		0.00	
Neosho River Site 2									
Spring River Site 1	0.00		0.00	0.00		0.00		0.00	
Spring River Site 2									

Samples were not collected in October, 2009 due to flooding and in February & May of 2010 due to weather conditions.

Cadmium Results (mg/l) FY 09-10



Samples were not collected in October, 2009 due to flooding and in February & May of 2010 due to weather conditions.



Cadmium Results (mg/l) FY 2009 - 2010 Average

0 455 910 1,820 2,730 3,640
Meters

Ottawa Tribe of Oklahoma
Environmental Department



Disclaimer: The Ottawa Tribe of Oklahoma makes no warranty for fitness of use for a particular purpose, express or implied, with respect to this map product. Every reasonable effort has been made to assure the accuracy of the maps and data provided nevertheless, some information may not be accurate. Any user of this map product accepts its faults and assumes all responsibility for the use thereof, and further agrees to hold the Ottawa Tribe harmless from and against any damage, loss or liability.



Contact Information

Drawn By: Lori Bailey

Phone: 918-541-1902

Date: October 29, 2010



Lead Results FY 09-10

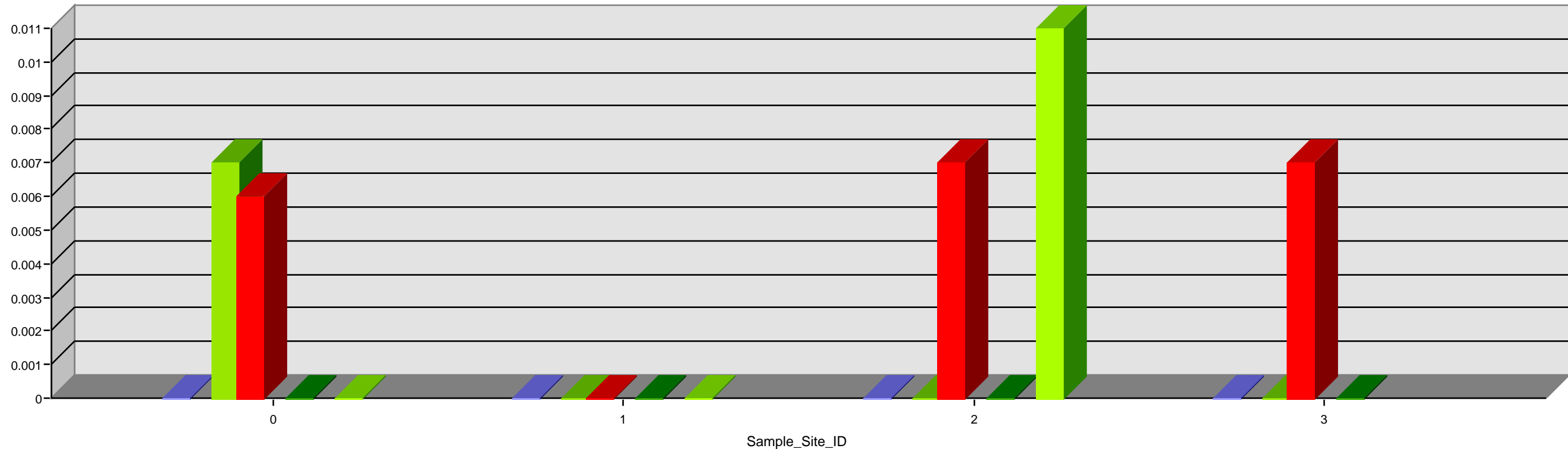
10/29/2010

Sample Site ID	November 09	December 09	January 10	March 10	April 10	June 10	July 10	August 10	September 10
Tar Creek	0.00		0.01	0.01		0.00		0.00	
Little Elm Creek	0.00		0.00	0.00		0.00			
Neosho River Site 1	0.00		0.00	0.01		0.00		0.00	
Neosho River Site 2									
Spring River Site 1	0.00		0.00	0.01		0.00		0.01	
Spring River Site 2									

Samples were not collected in October, 2009 due to flooding and in February & May of 2010 due to weather conditions.

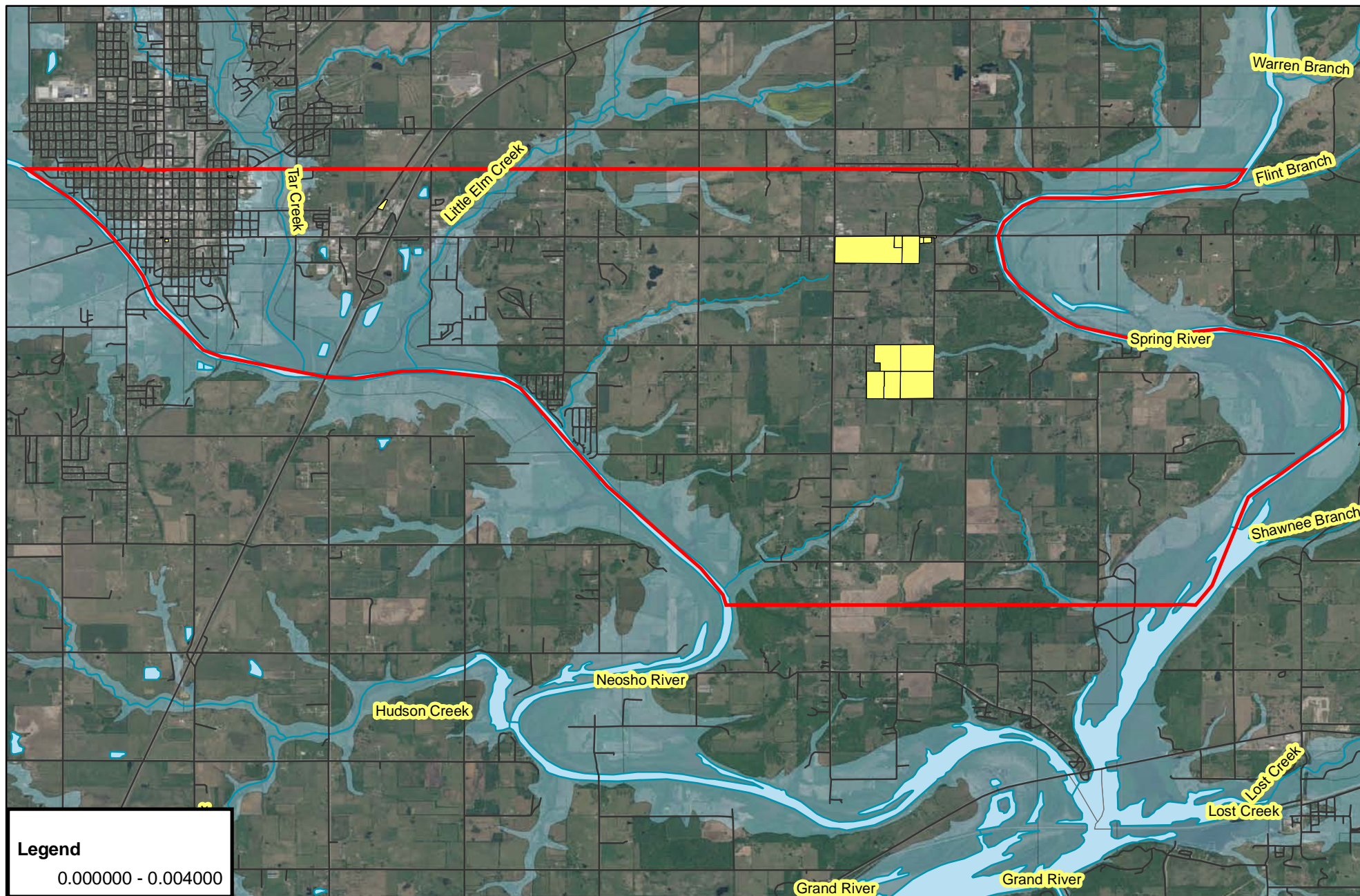
Ottawa Tribe of Oklahoma
Environmental Department
10 N 69 A
Miami, OK 74354
918-541-1902

Lead Results FY 09-10



November 09 December 09 January 10 March 10 April 10 June 10 July 10 August 10 September 10

Samples were not collected in October, 2009 due to flooding and in February & May of 2010 due to weather conditions.



Lead Results FY 2009 - 2010 Average

0 455 910 1,820 2,730 3,640 Meters

Ottawa Tribe of Oklahoma
Environmental Department



Disclaimer: The Ottawa Tribe of Oklahoma makes no warranty for fitness of use for a particular purpose, express or implied, with respect to this map product. Every reasonable effort has been made to assure the accuracy of the maps and data provided nevertheless, some information may not be accurate. Any user of this map product accepts its faults and assumes all responsibility for the use thereof, and further agrees to hold the Ottawa Tribe harmless from and against any damage, loss or liability.



Contact Information

Drawn By: Lori Bailey
Phone: 918-541-1902
Date: October 29, 2010



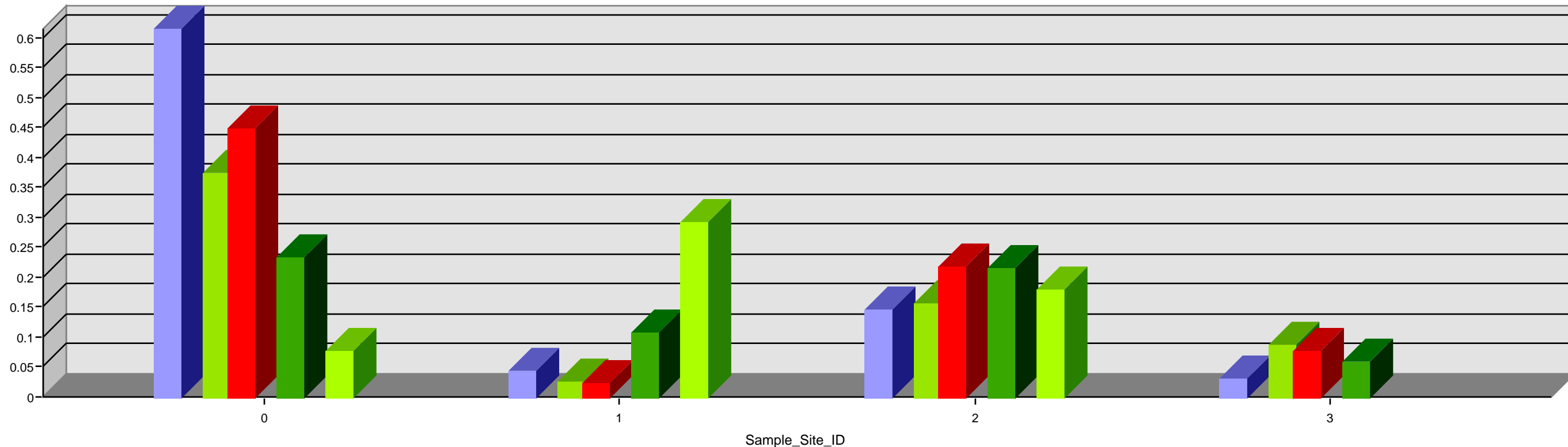
Manganese Results FY 09-10

10/29/2010

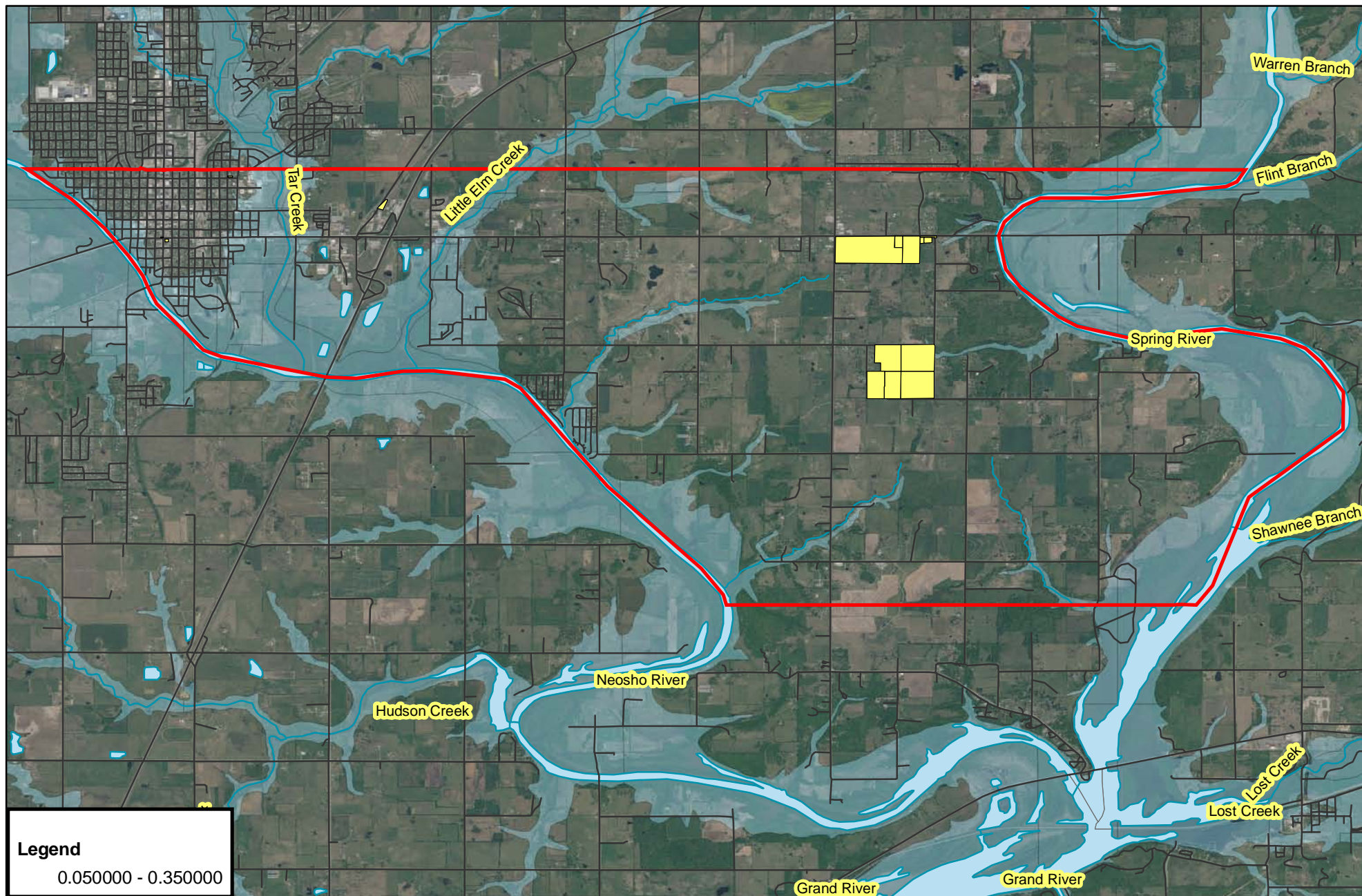
Sample Site ID	November 09	December 09	January 10	March 10	April 10	June 10	July 10	August 10	September 10
Tar Creek	0.62		0.37	0.45		0.23		0.08	
Little Elm Creek	0.04		0.03	0.02		0.11			
Neosho River Site 1	0.15		0.16	0.22		0.21		0.29	
Neosho River Site 2									
Spring River Site 1	0.03		0.09	0.08		0.06		0.18	
Spring River Site 2									

Samples were not collected in October, 2009 due to flooding and in February & May of 2010 due to weather conditions.

Manganese Results FY 09-10



Samples were not collected in October, 2009 due to flooding and in February & May of 2010 due to weather conditions.



Manganese Results FY 2009 - 2010 Average

0 455 910 1,820 2,730 3,640
Meters

Ottawa Tribe of Oklahoma
Environmental Department



Disclaimer: The Ottawa Tribe of Oklahoma makes no warranty for fitness of use for a particular purpose, express or implied, with respect to this map product. Every reasonable effort has been made to assure the accuracy of the maps and data provided nevertheless, some information may not be accurate. Any user of this map product accepts its faults and assumes all responsibility for the use thereof, and further agrees to hold the Ottawa Tribe harmless from and against any damage, loss or liability.



Contact Information

Drawn By: Lori Bailey

Phone: 918-541-1902

Date: October 29, 2010



Fecal Coliform Results FY 09-10

10/29/2010

Sample Site ID	November 09	December 09	January 10	March 10	April 10	June 10	July 10	August 10	September 10
Tar Creek	P	P	P	P	P	P	P	P	P
Little Elm Creek	P	P	P	P	P	P	P		P
Neosho River Site 1	P	P	P	P	P	P	P	P	P
Neosho River Site 2	P	P	P	P	P	P	P	P	P
Spring River Site 1	P	P	P	P	P	P	P	P	P
Spring River Site 2	P	P	P	P	P	P	P	P	P

Samples were not collected in October, 2009 due to flooding and in February & May of 2010 due to weather conditions.

Ottawa Tribe of Oklahoma
Environmental Department
10 N 69 A
Miami, OK 74354
918-541-1902